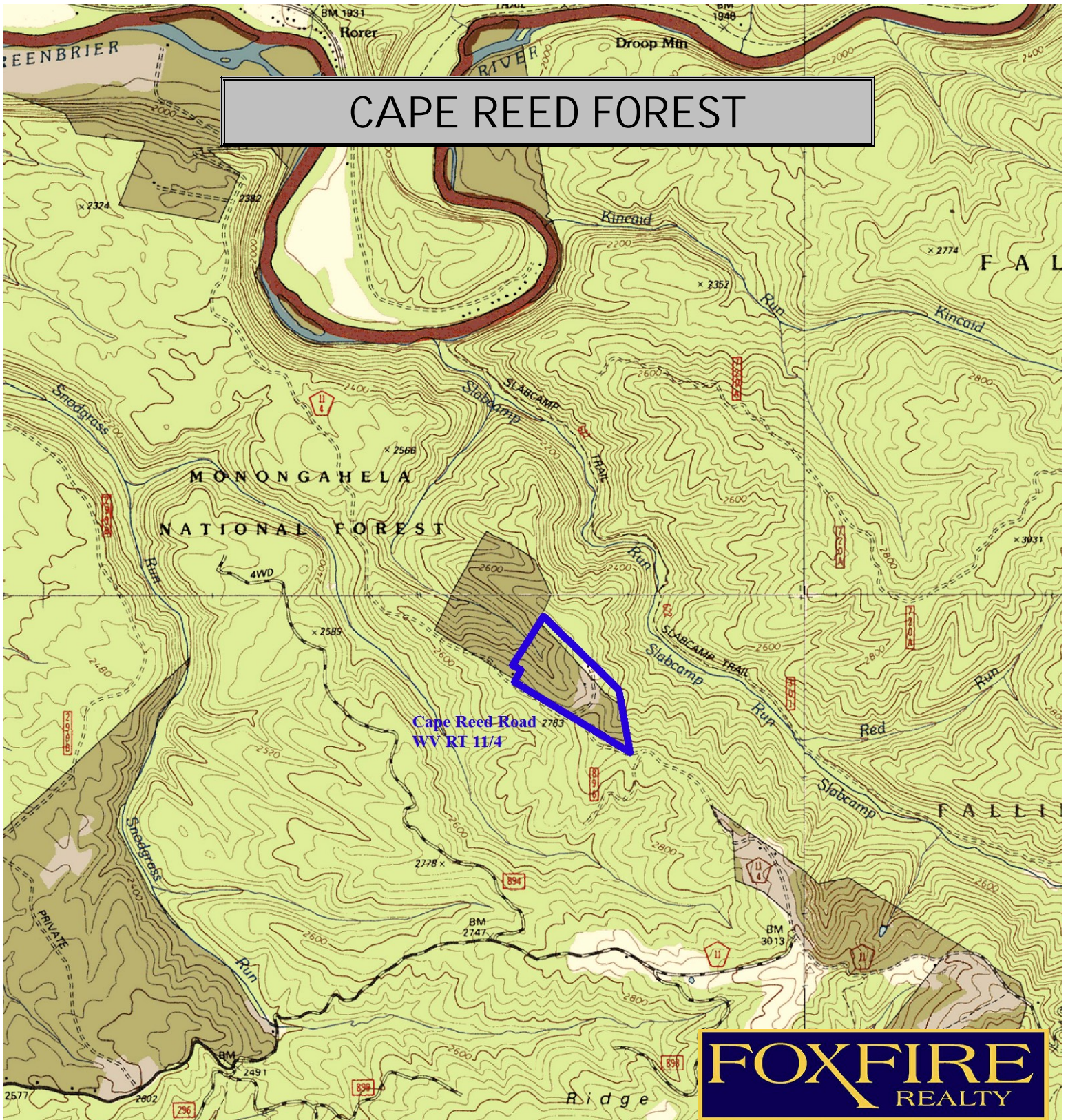
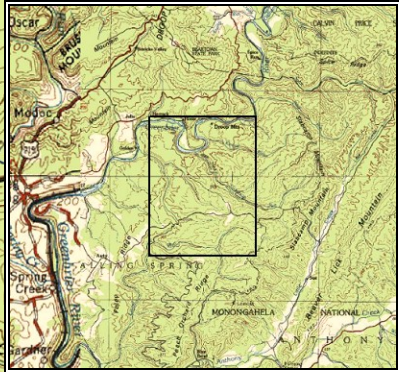


CAPE REED FOREST



FOXFIRE
REALTY



CAPE REED FOREST
GREENBRIER COUNTY, WEST VIRGINIA
ELEVATION RANGE: 2555 - 2810' +/-; Google Coordinates:
LAT 37.996087 (N); LON -80.262003 (W) This map is for
general location purposes only. Consult a licensed surveyor
for exact boundary and acreage information.

RICHARD GRIST, Broker - Auctioneer - Forester
304.646.8837 Richard@foxfirenation.com
WWW.FOXFIRENATION.COM

