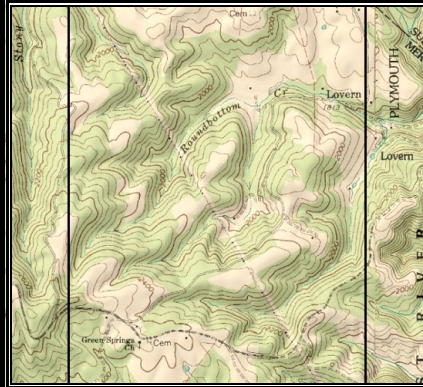
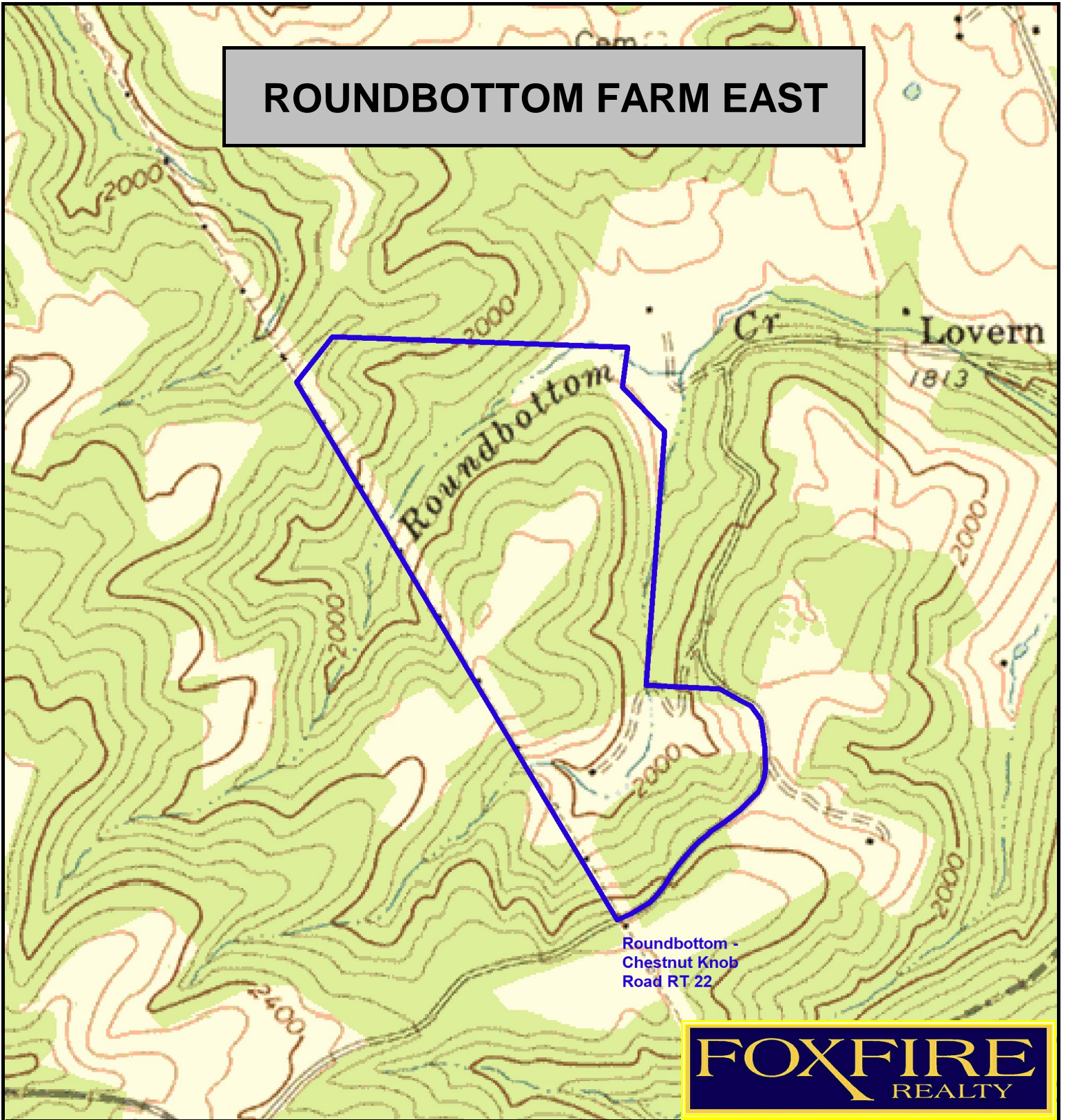


ROUNDBOTTOM FARM EAST



ROUNDBOTTOM FARM EAST
Mercer County, West Virginia
Elevation Range: 1863' - 2124' +/-; Google Coordinates:
LAT 37.428436 (N), LON -80.881729 (W) This map is for
general location purposes. Consult a licensed surveyor
for exact boundary and acreage information.

FOXFIRE
REALTY

RICHARD GRIST, Broker - Auctioneer - Forester
304.646.8837 Richard@Foxfirenation.com
WWW.FOXFIRENATION.COM

SCALE 1:9600

