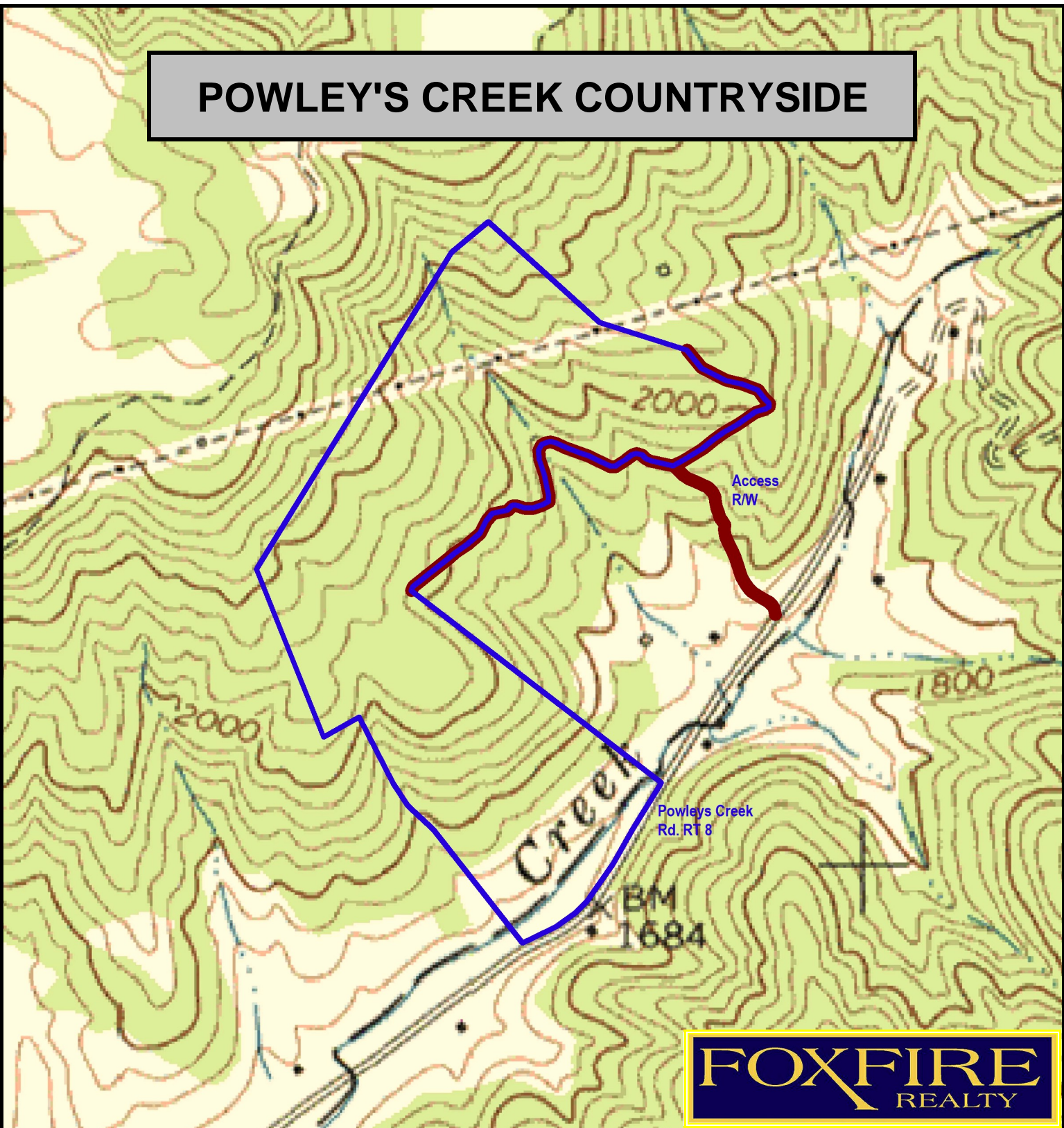
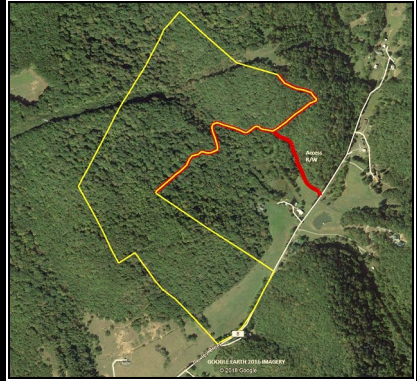


POWLEY'S CREEK COUNTRYSIDE



FOXFIRE
REALTY



POWLEY'S CREEK COUNTRYSIDE, Summers County, WV
(topographic map)
Elevation Range: 1678' - 2289' +/-; Google Coordinates:
LAT 37.665819 (N), LON -80.796772 (W)
This map is for general location purposes only. Consult a
licensed land surveyor for actual boundary location and
acreage.

RICHARD GRIST, Broker - Auctioneer - Forester
304.646.8837 Richard@Foxfirenation.com
WWW.FOXFIRENATION.COM

