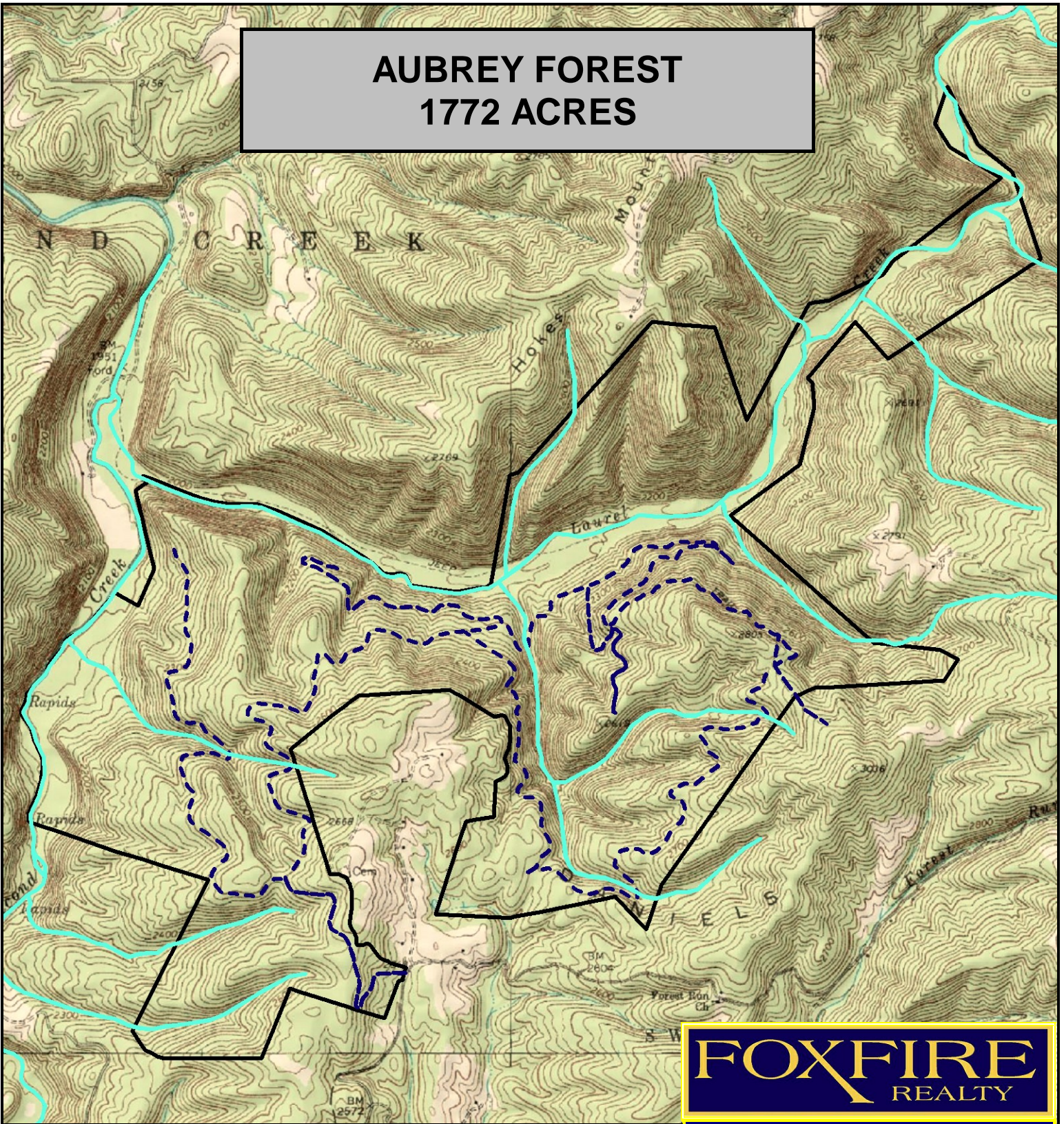
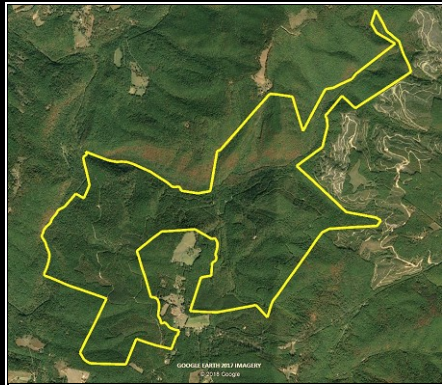


AUBREY FOREST 1772 ACRES



FOXFIRE
REALTY



AUBREY FOREST 1772 ACRES, Monroe County, WV
(topographic map)
Elevation Range: 1976' - 2825' +/-; Google Coordinates:
LAT 37.628550 (N), LON -80.422178 (W)
This map is for general location purposes only. Consult a licensed land
surveyor for actual boundary location and acreage.

RICHARD GRIST, Broker - Auctioneer - Forester
304.646.8837 Richard@Foxfirenation.com
WWW.FOXFIRENATION.COM

