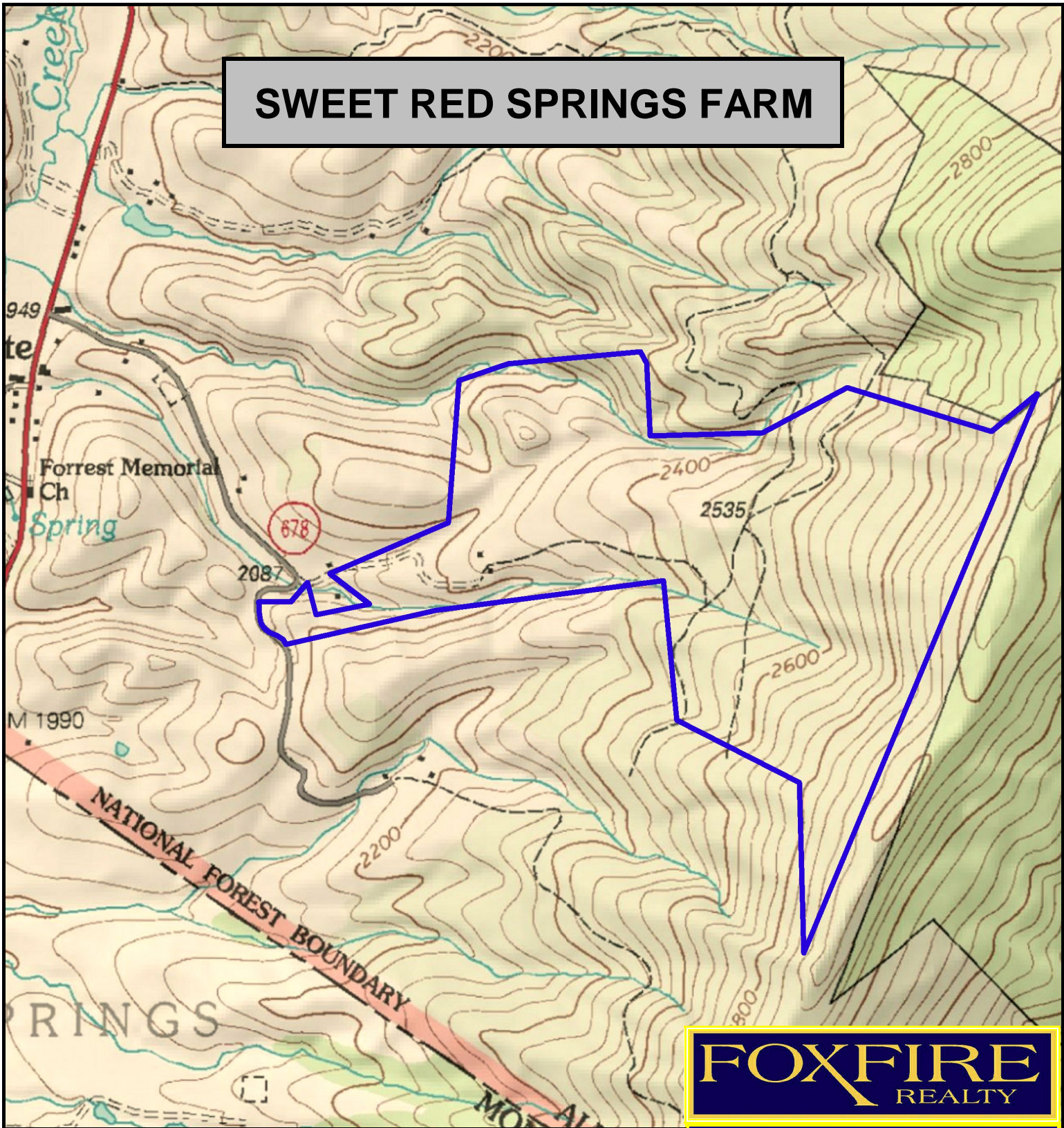
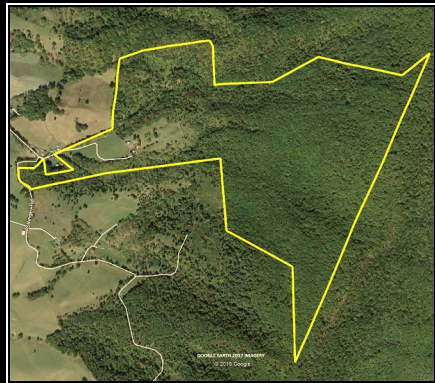


# SWEET RED SPRINGS FARM



**FOXFIRE**  
REALTY



SWEET RED SPRINGS FARM, Alleghany County, VA (topographic map)  
Elevation Range: 2104 - 2967' +/- Google Coordinates:  
LAT 37.641136 (N), LON -80.225733 (W)  
This map is for general location purposes only. Consult a licensed  
land surveyor for actual boundary location and acreage.  
Topo Map Scale: 1 inch = 1000 feet

**RICHARD GRIST, Broker - Auctioneer - Forester**  
304.646.8837 Richard@Foxfirenation.com  
[WWW.FOXFIRENATION.COM](http://WWW.FOXFIRENATION.COM)

