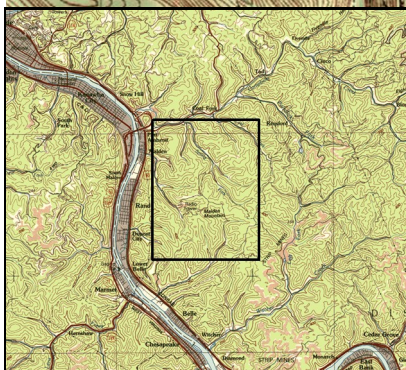
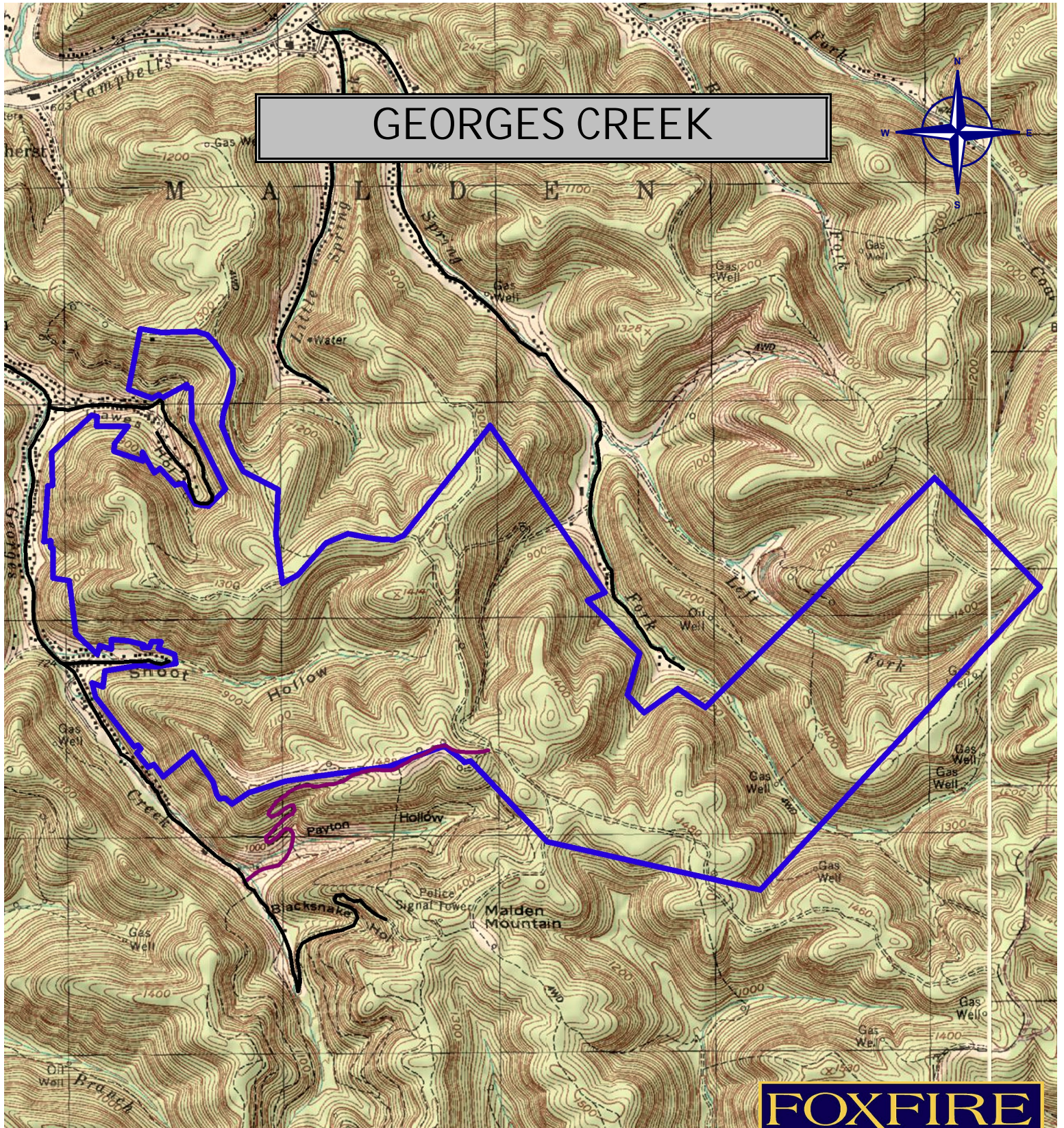


GEORGES CREEK



GEORGES CREEK
KANAWHA COUNTY, WEST VIRGINIA
ELEV. RANGE 735' - 1485' +/-; LAT 38.288269N; LON 81.528180W
(NAD83) This map is for general location purposes only. Consult a
licensed surveyor for exact boundary and acreage information.

FOXFIRE
REALTY

RICHARD GRIST
Broker - Auctioneer - Forester
304.646.8837
Richard@foxfirenation.com
WWW.FOXFIRENATION.COM

SCALE 1:24000

