



SHEPHERD'S MEADOW

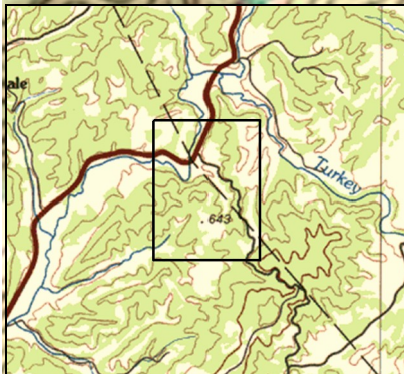
Indian Creek
Covered Bridge

St Johns
Ch

US 219

Covered Bridge

PYNE MTN ROAD
WV RT 219/10



SHEPHERD'S MEADOW
MONROE COUNTY, WEST VIRGINIA
ELEV. RANGE 1755' - 2110' +/-; GOOGLE
COORDINATES: LAT 37.545431; LON -80.572853 This
map is for general location purposes only. Consult a licensed
surveyor for exact boundary and acreage information.

FOXFIRE
REALTY

RICHARD GRIST, Broker - Auctioneer - Forester
304.646.8837 Richard@foxfirenation.com
WWW.FOXFIRENATION.COM

SCALE 1:7000

