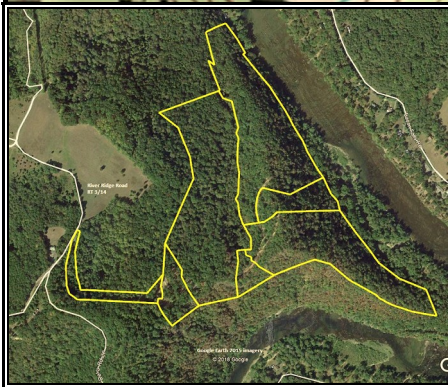
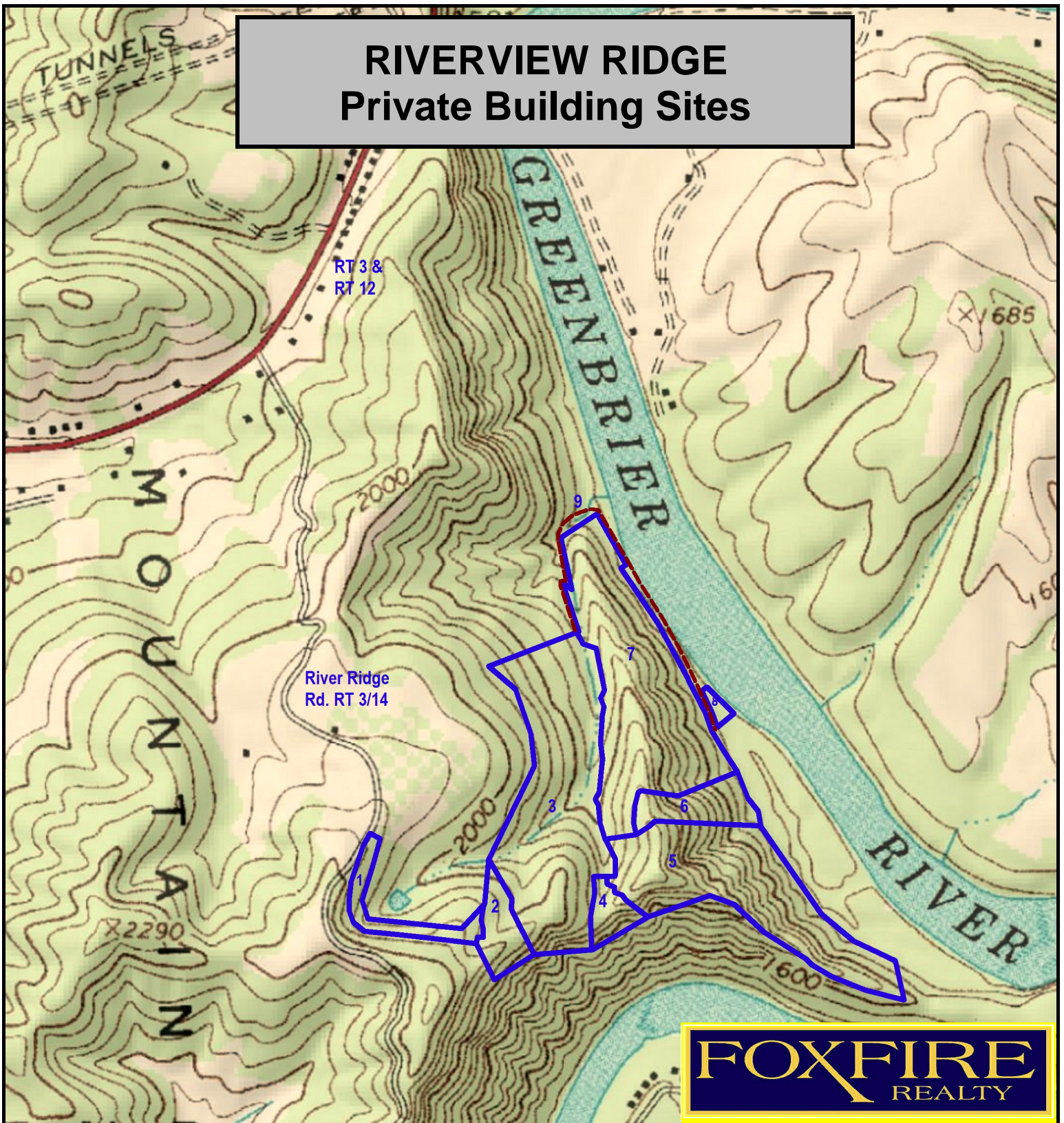


RIVERVIEW RIDGE

Private Building Sites



RIVERVIEW RIDGE, Summers County, WV
(topographic map)
Elevation Range: 1497' - 2766' +/-; Google
Coordinates: LAT 37.634315 (N), LON -80.769043 (W)
This map is for general location purposes only.

FOX FIRE
REALTY

RICHARD GRIST, Broker - Auctioneer - Forester
304.646.8837 Richard@Foxfirenation.com
WWW.FOXFIRENATION.COM

SCALE 1:10000

