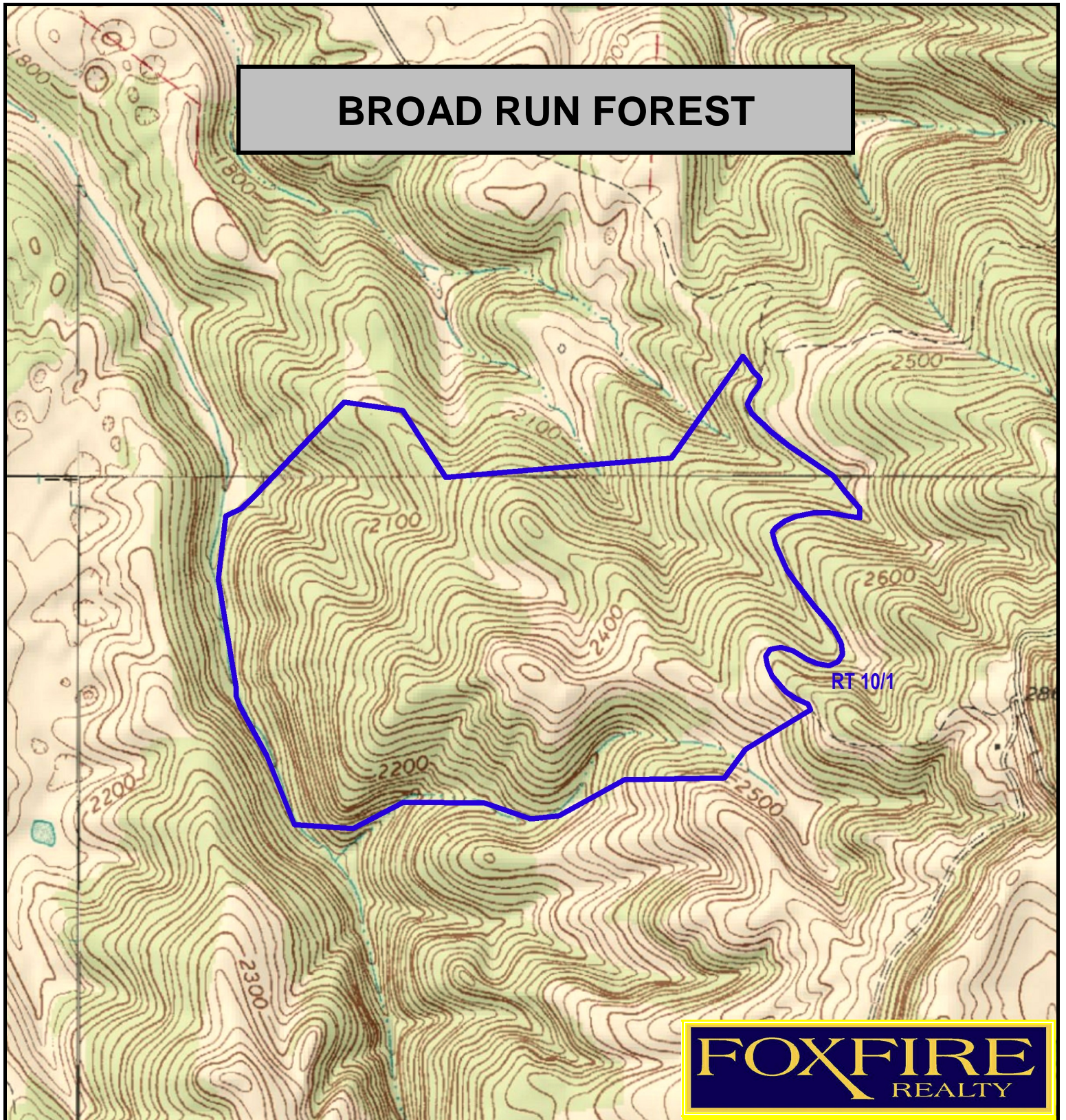


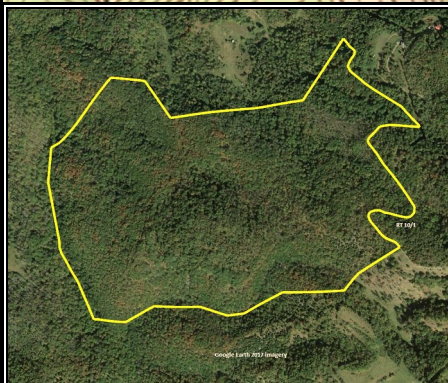
# BROAD RUN FOREST



**FOXFIRE**  
REALTY

BROAD RUN FOREST, Monroe County, WV  
(topographic map)  
Elevation Range: 1806' - 2604' +/-; Google Coordinates:  
LAT 37.620316 (N), LON -80.605557 (W)  
This map is for general location purposes only. Consult a  
licensed land surveyor for actual boundary location and acreage.

RICHARD GRIST, Broker - Auctioneer - Forester  
304.646.8837 Richard@Foxfirenation.com  
[WWW.FOXFIRENATION.COM](http://WWW.FOXFIRENATION.COM)



SCALE 1:12000

