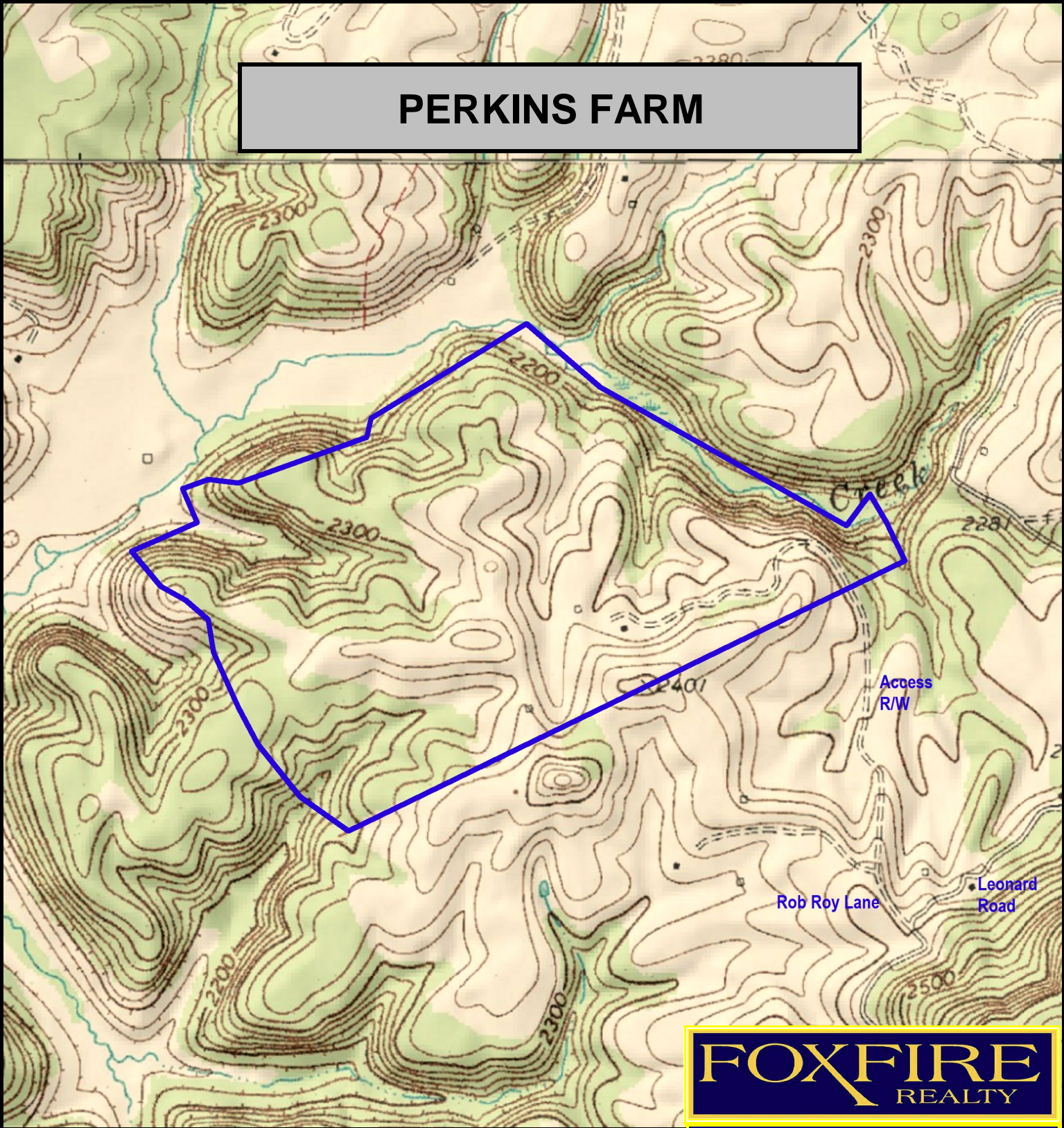
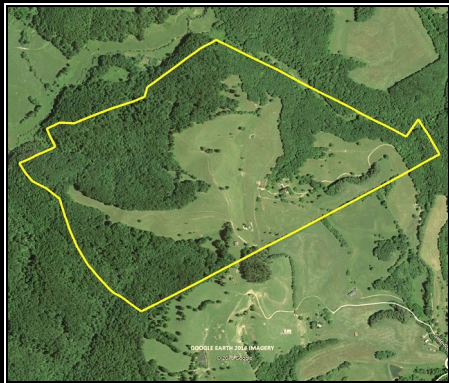


PERKINS FARM



FOXFIRE
REALTY



PERKINS FARM, Greenbrier County, WV (topographic map)
Elevation Range: 2174' - 2397' +/-; Google Coordinates:
LAT 37.990901 (N), LON -80.430424 (W)
This map is for general location purposes only. Consult a
licensed land surveyor for actual boundary location and
acreage.

RICHARD GRIST, Broker - Auctioneer - Forester
304.646.8837 Richard@Foxfirenation.com
WWW.FOXFIRENATION.COM

