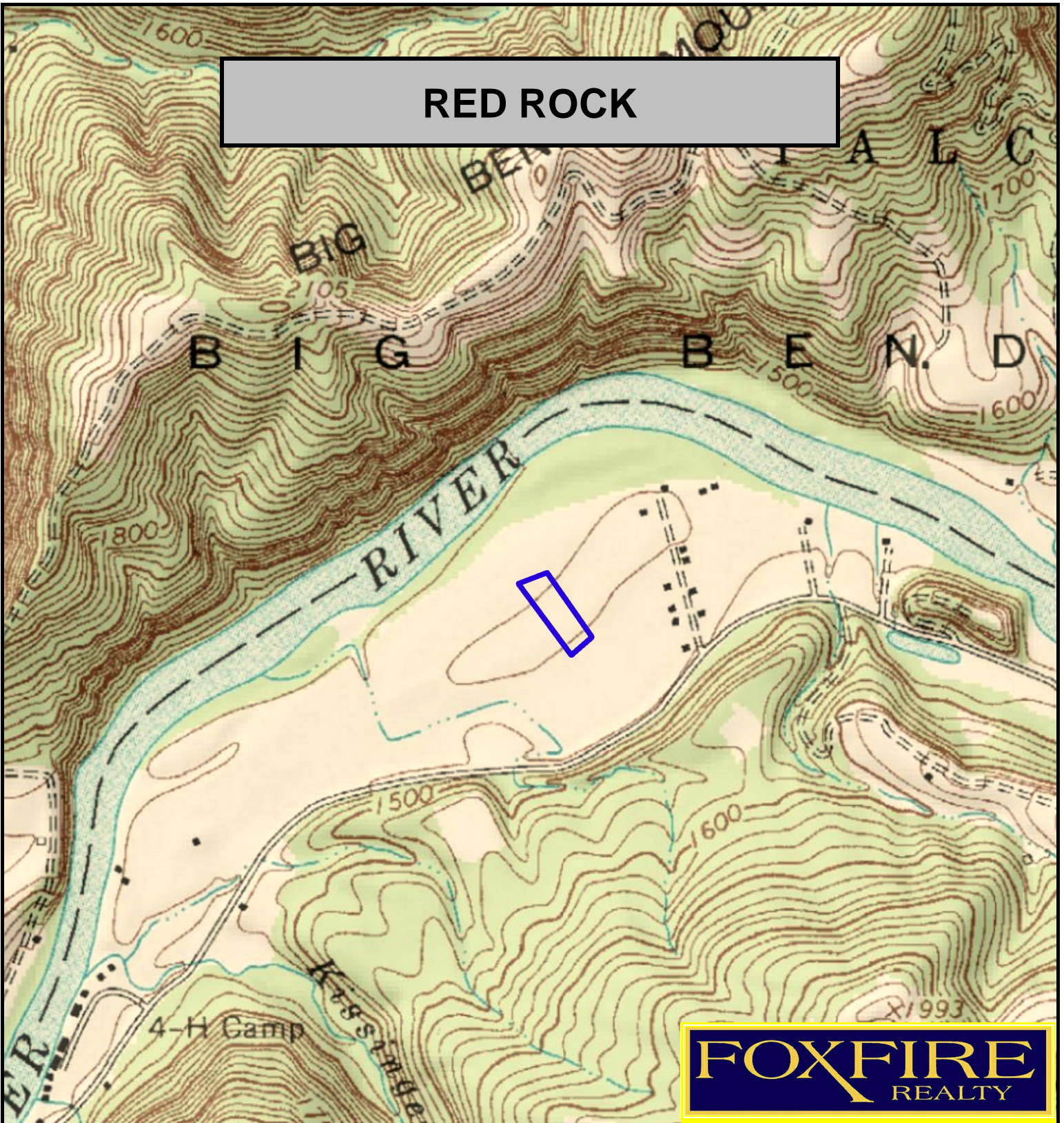
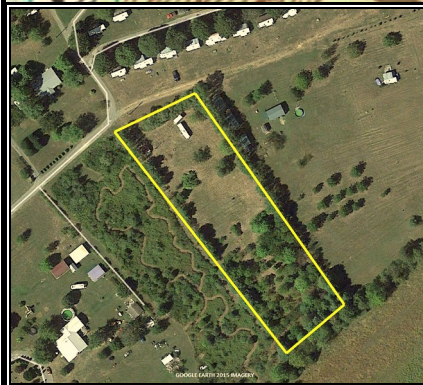


RED ROCK



FOXFIRE
REALTY



RED ROCK, Summers County, WV (topographic map)
Elevation: 1443' +/-; Google Coordinates:
LAT 37.612676 (N), LON -80.776576 (W)
This map is for general location purposes only. Consult a licensed land
surveyor for actual boundary location and acreage.
Topo Map Scale: 1 inch = 800 feet

RICHARD GRIST, Broker - Auctioneer - Forester
304.646.8837 Richard@Foxfirenation.com
WWW.FOXFIRENATION.COM

SCALE 1:9600

