

TUMBLING ROCKS

Access Gate

Coleman Cliff Rd.
(deeded access R/W)

× 2371

BM
1819

Woodman

Deeded R/W
access to the
river

BM
2154

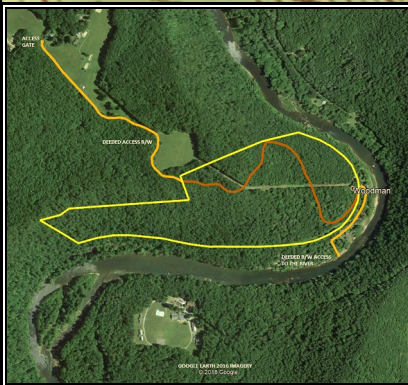
Greenbrier Youth
Camp

1950

FOXFIRE
REALTY

TUMBLING ROCKS, Greenbrier County, WV (topographic map)
Elevation Range: 1840' - 2328' +/- Google Coordinates:
LAT 37.912079 (N), LON -80.322402 (W)
This map is for general location purposes only. Consult a licensed land
surveyor for actual boundary location and acreage.
SCALE: 1 inch = 800 feet

RICHARD GRIST, Broker - Auctioneer - Forester
304.646.8837 Richard@Foxfirenation.com
WWW.FOXFIRENATION.COM



SCALE 1:9600

