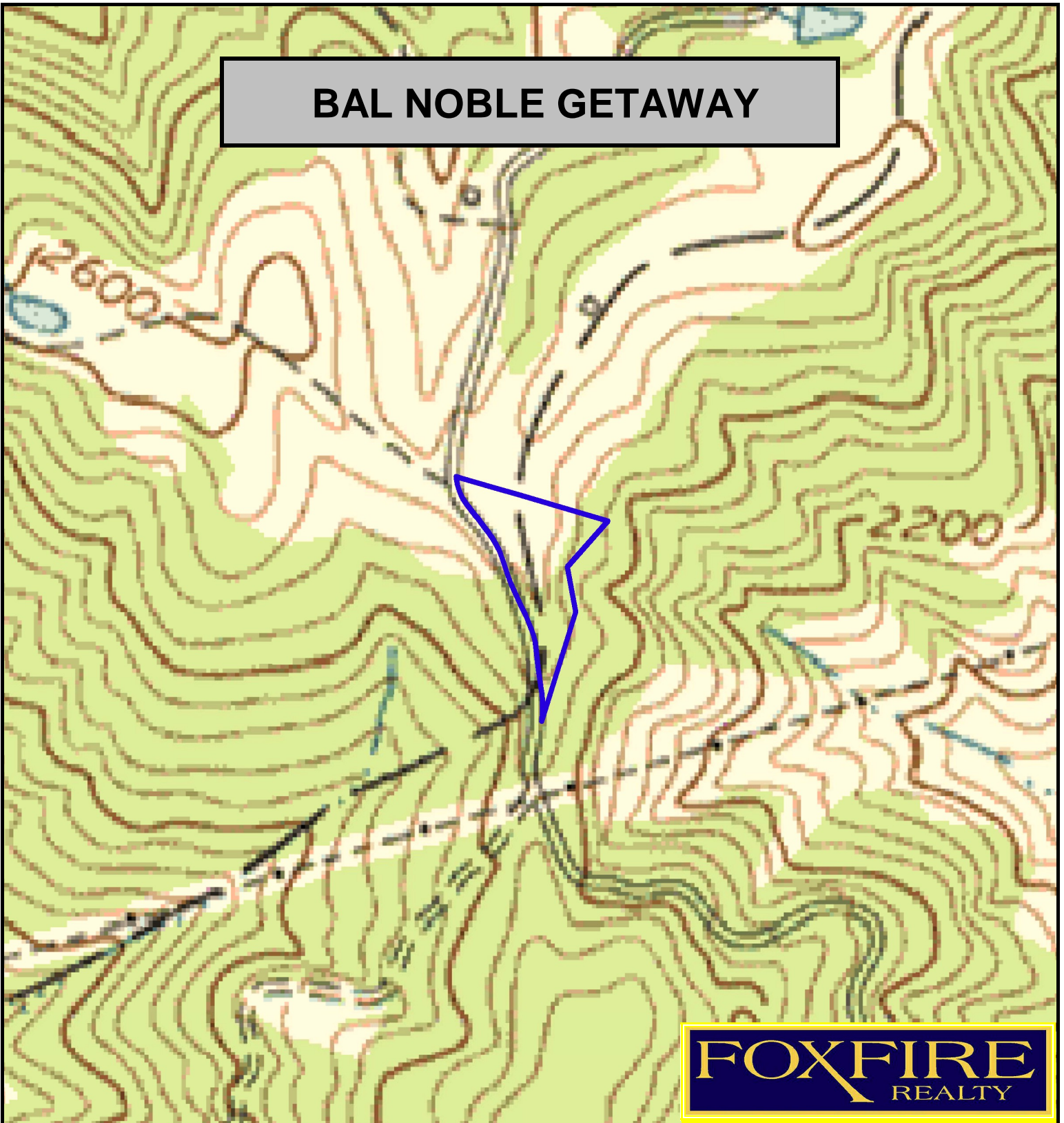


# BAL NOBLE GETAWAY



**FOX FIRE**  
REALTY



BAL NOBLE GETAWAY, Summers County, WV (topographic map)  
Elevation Range: 2468' - 2526' +/- Google Coordinates:  
LAT 37.678417 (N), LON -80.783722 (W)  
This map is for general location purposes only. Consult a licensed land  
surveyor for actual boundary location and acreage.

RICHARD GRIST, Broker - Auctioneer - Forester  
304.646.8837 Richard@Foxfirenation.com  
[WWW.FOXFIRENATION.COM](http://WWW.FOXFIRENATION.COM)

FOR TOPO MAP SCALE 1:4800 1 INCH = 400 FT.

