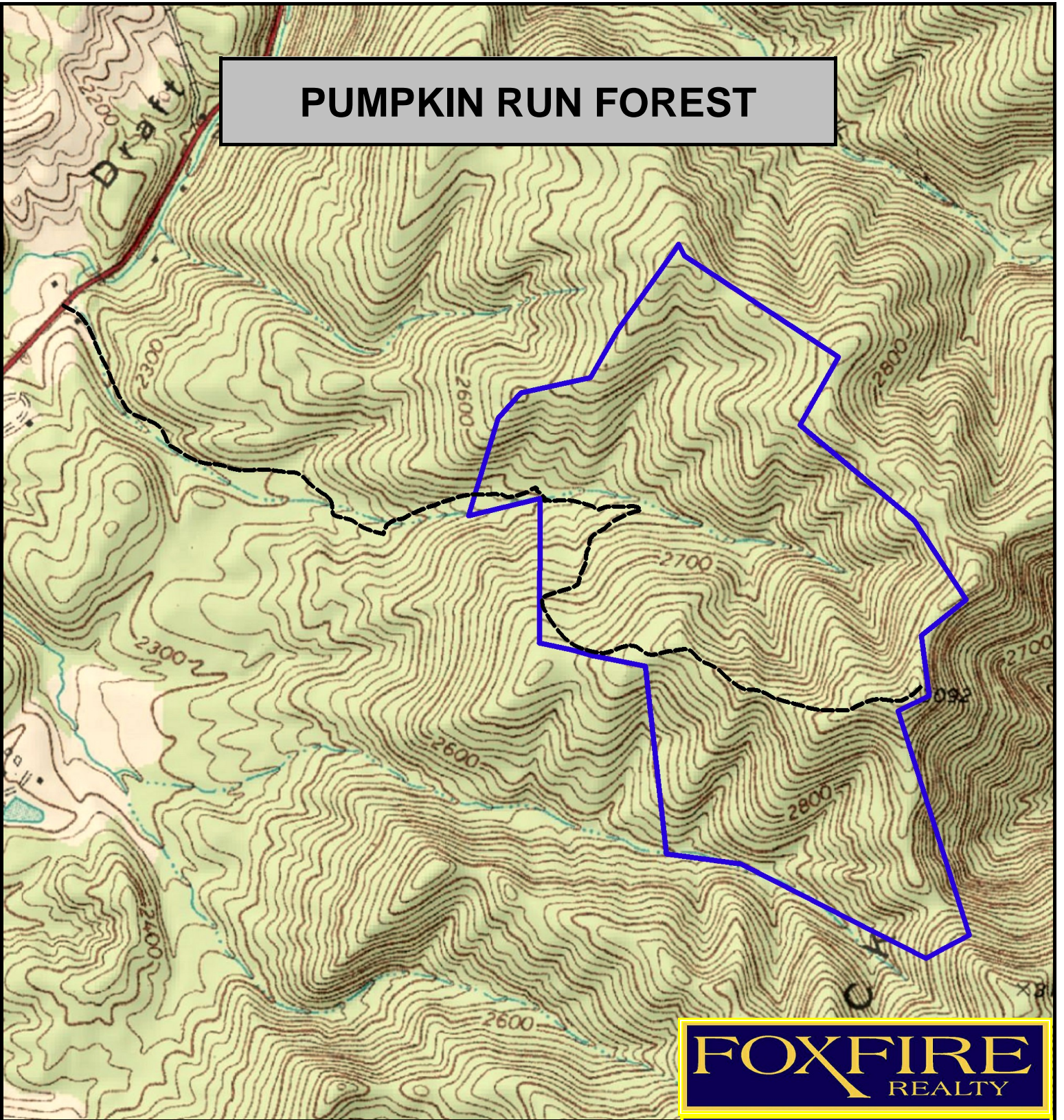
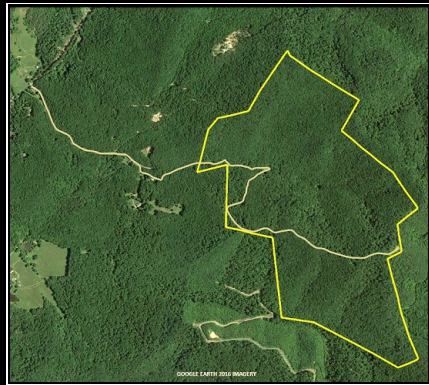


# PUMPKIN RUN FOREST



**FOXFIRE**  
REALTY



PUMPKIN RUN FOREST, Greenbrier County, WV (topographic map)  
Elevation Range: 2464' - 3065' +/-; Google Coordinates:  
LAT 37.734699 (N), LON -80.402515 (W)  
This map is for general location purposes only. Consult a licensed land  
surveyor for actual boundary location and acreage.

**RICHARD GRIST, Broker - Auctioneer - Forester**  
304.646.8837 Richard@Foxfirenation.com  
[WWW.FOXFIRENATION.COM](http://WWW.FOXFIRENATION.COM)

FOR TOPO MAP

SCALE 1:12000

1 INCH = 1,000 FT.

0 1000 2000 3000 4000

Feet

0.0 0.1 0.2 0.3 0.4 0.5 0.6 0.7 0.8

Miles

