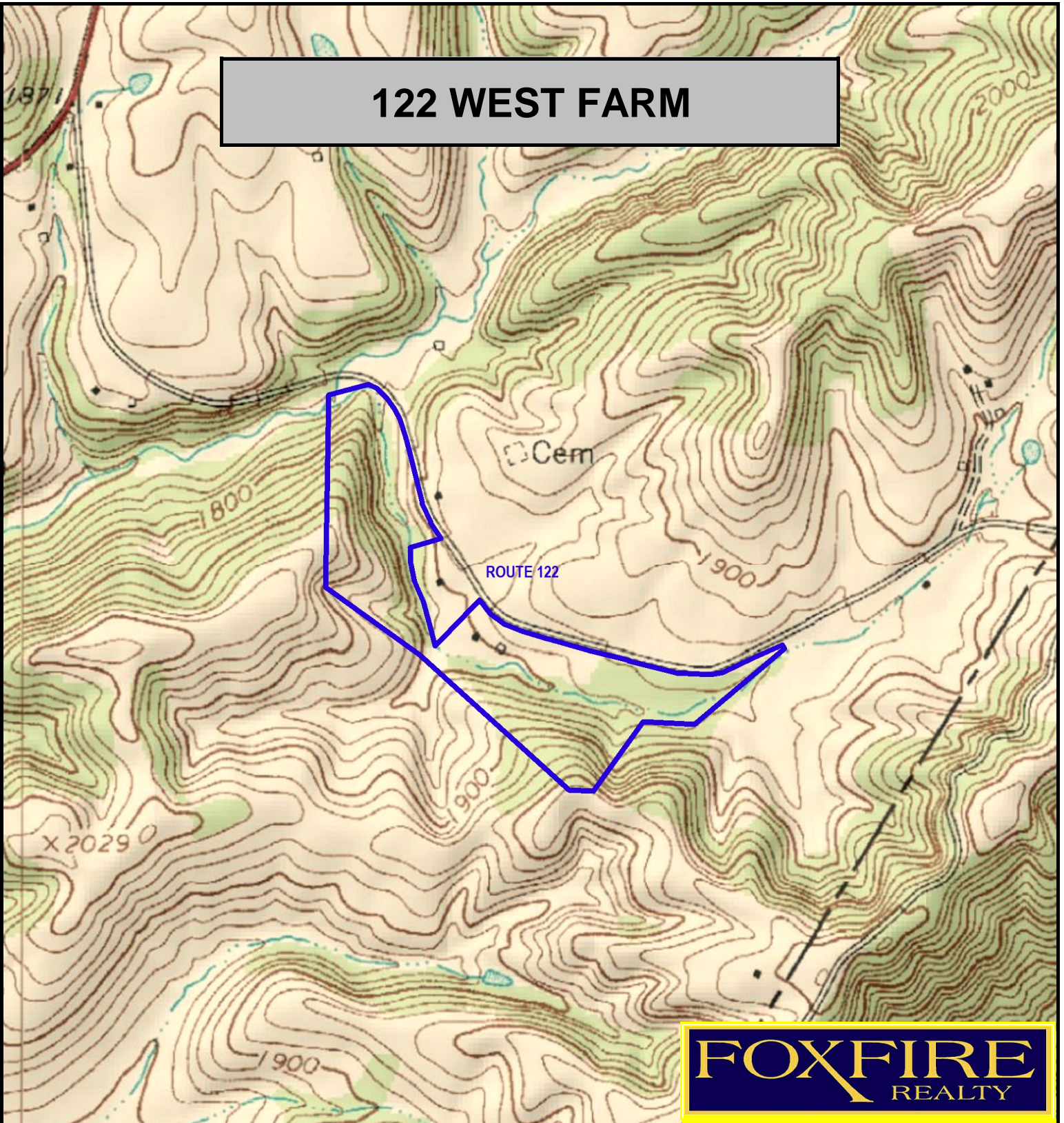
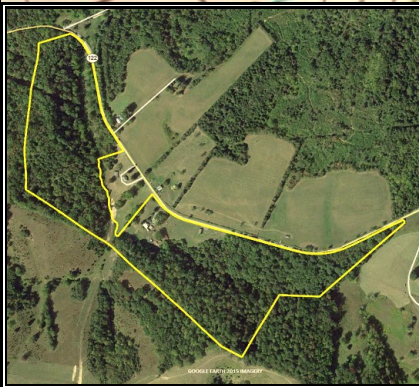


122 WEST FARM



FOXFIRE
REALTY



122 WEST FARM, Summers County, WV (topographic map)
Elevation Range: 1752' - 2007' +/- Google Coordinates:
LAT 37.557951 (N), LON -80.782054 (W)
This map is for general location purposes only. Although this information
is deemed reliable, it is not guaranteed.

RICHARD GRIST, Broker - Auctioneer - Forester
304.646.8837 Richard@Foxfirenation.com
WWW.FOXFIRENATION.COM

FOR TOPO MAP

SCALE 1:9600

1 INCH = 800 FT.

