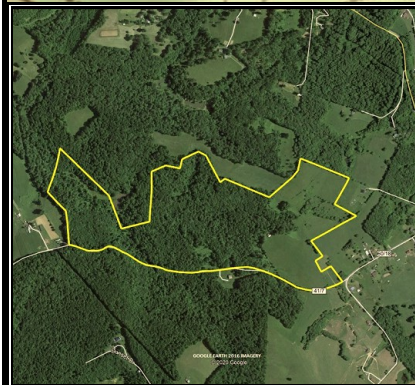
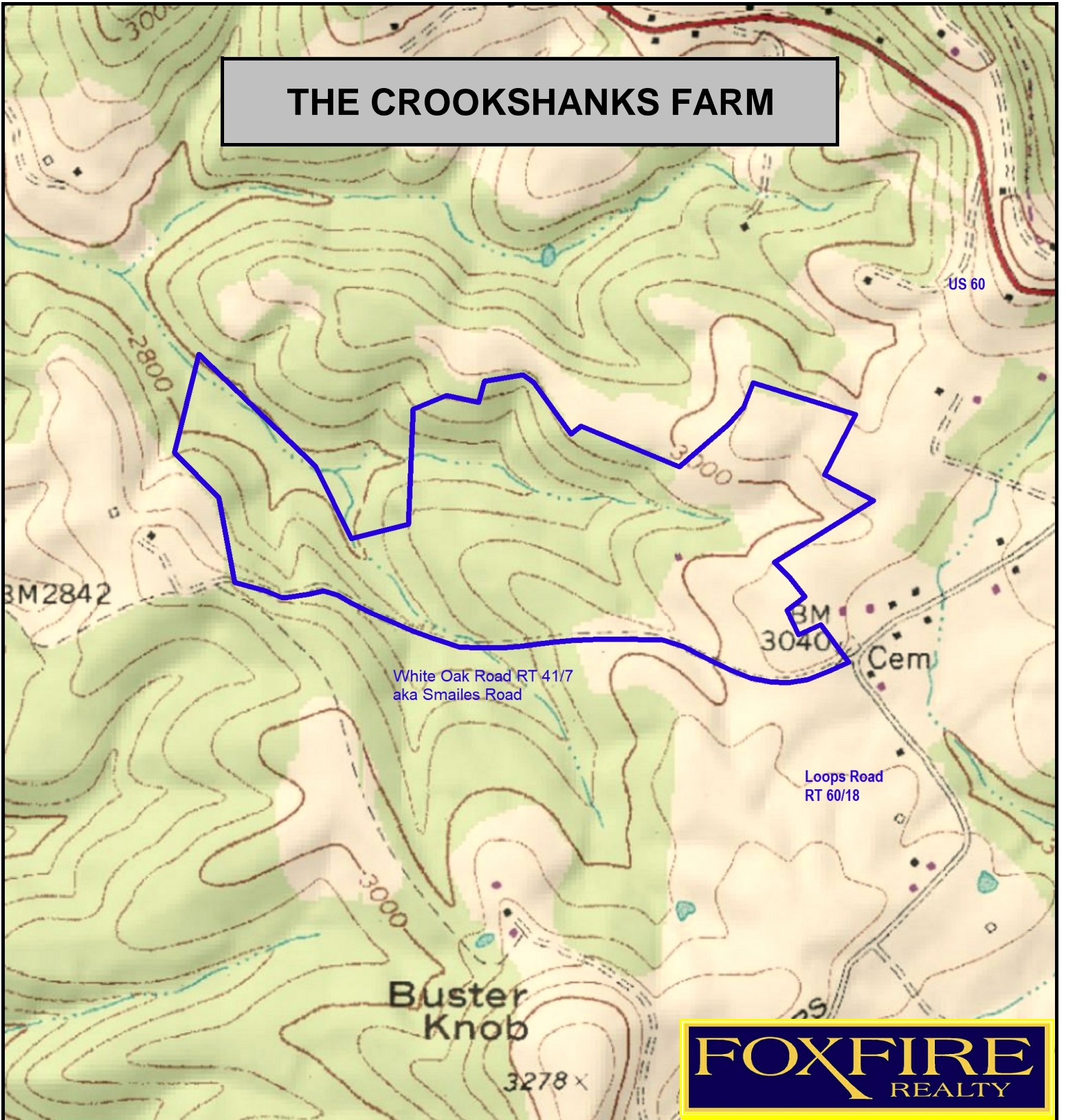


THE CROOKSHANKS FARM



THE CROOKSHANKS FARM, Fayette County, WV (topographic map)
Elevation Range: 2801' - 3038' +/- Google Coordinates:
LAT 37.966904 (N), LON -80.823869 (W)
This map is for general location purposes only. Consult a licensed land
surveyor for actual boundary location and acreage.

RICHARD GRIST, Broker - Auctioneer - Forester
304.646.8837 Richard@Foxfirenation.com
WWW.FOXFIRENATION.COM

