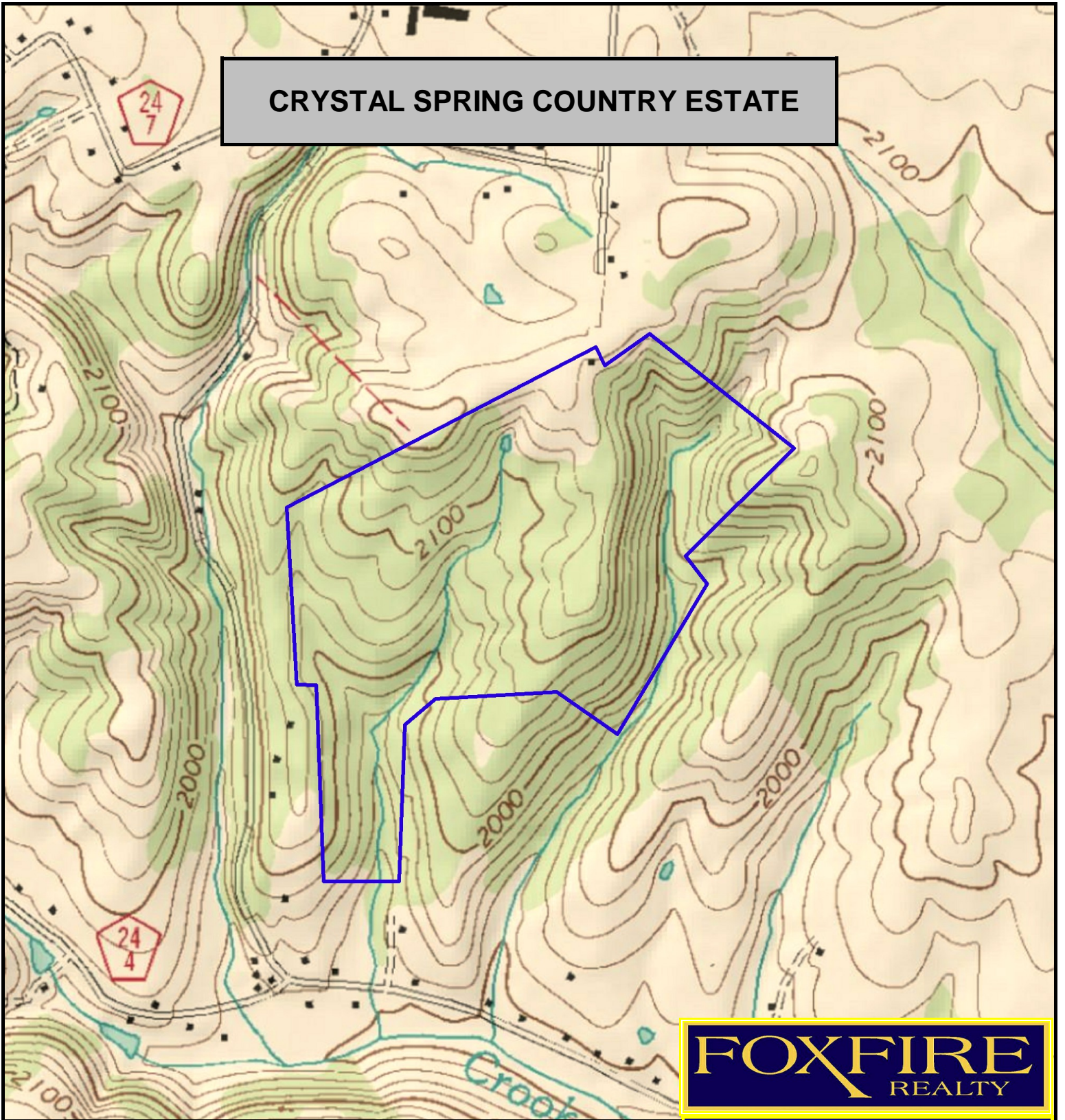
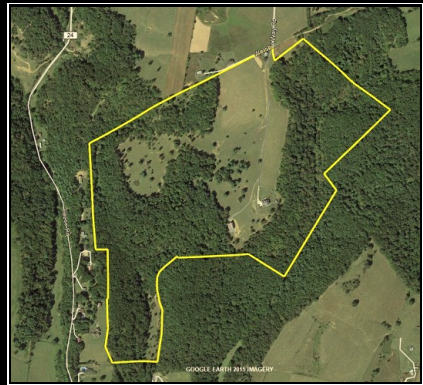


CRYSTAL SPRING COUNTRY ESTATE



FOXFIRE
REALTY



CRYSTAL SPRING COUNTRY ESTATE, Monroe County, WV
(topographic map)
Elevation Range: 1930' - 2213' +/-; Google Coordinates:
LAT 37.443495 (N), LON -80.810144 (W)
This map is for general location purposes only. Consult a licensed land
surveyor for actual boundary location and acreage.

RICHARD GRIST, Broker - Auctioneer - Forester
304.646.8837 Richard@Foxfirenation.com
WWW.FOXFIRENATION.COM

FOR TOPO MAP

SCALE 1:9600

1 INCH = 800 FT.

