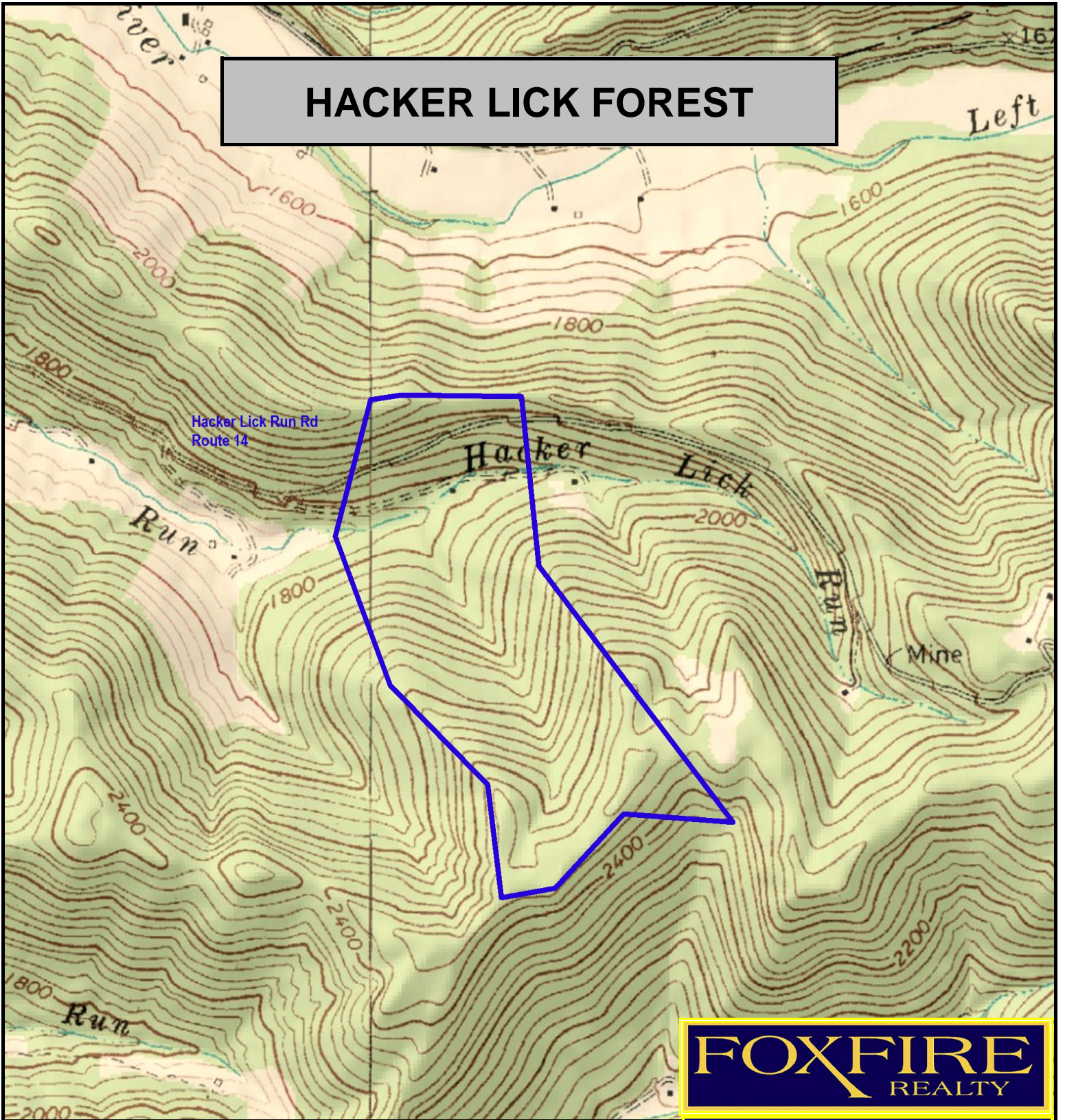
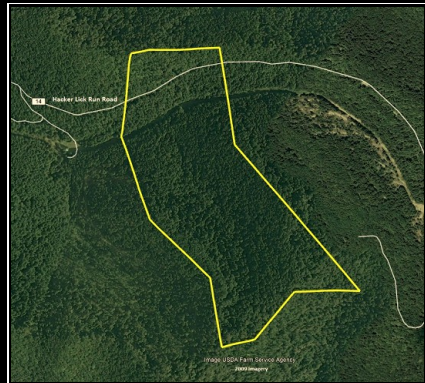


HACKER LICK FOREST



FOXFIRE
REALTY



HACKER LICK FOREST, Webster County, WV (topographic map)
Elevation Range: 1738' - 2527' +/-; Google Coordinates:
LAT 38.640333 (N), LON -80.375129 (W)
This map is for general location purposes only. Consult a licensed land
surveyor for actual boundary location and acreage.

RICHARD GRIST, Broker - Auctioneer - Forester
304.646.8837 Richard@Foxfirenation.com
WWW.FOXFIRENATION.COM

FOR TOPO MAP

SCALE 1:12000

1 INCH = 1,000 FT.

