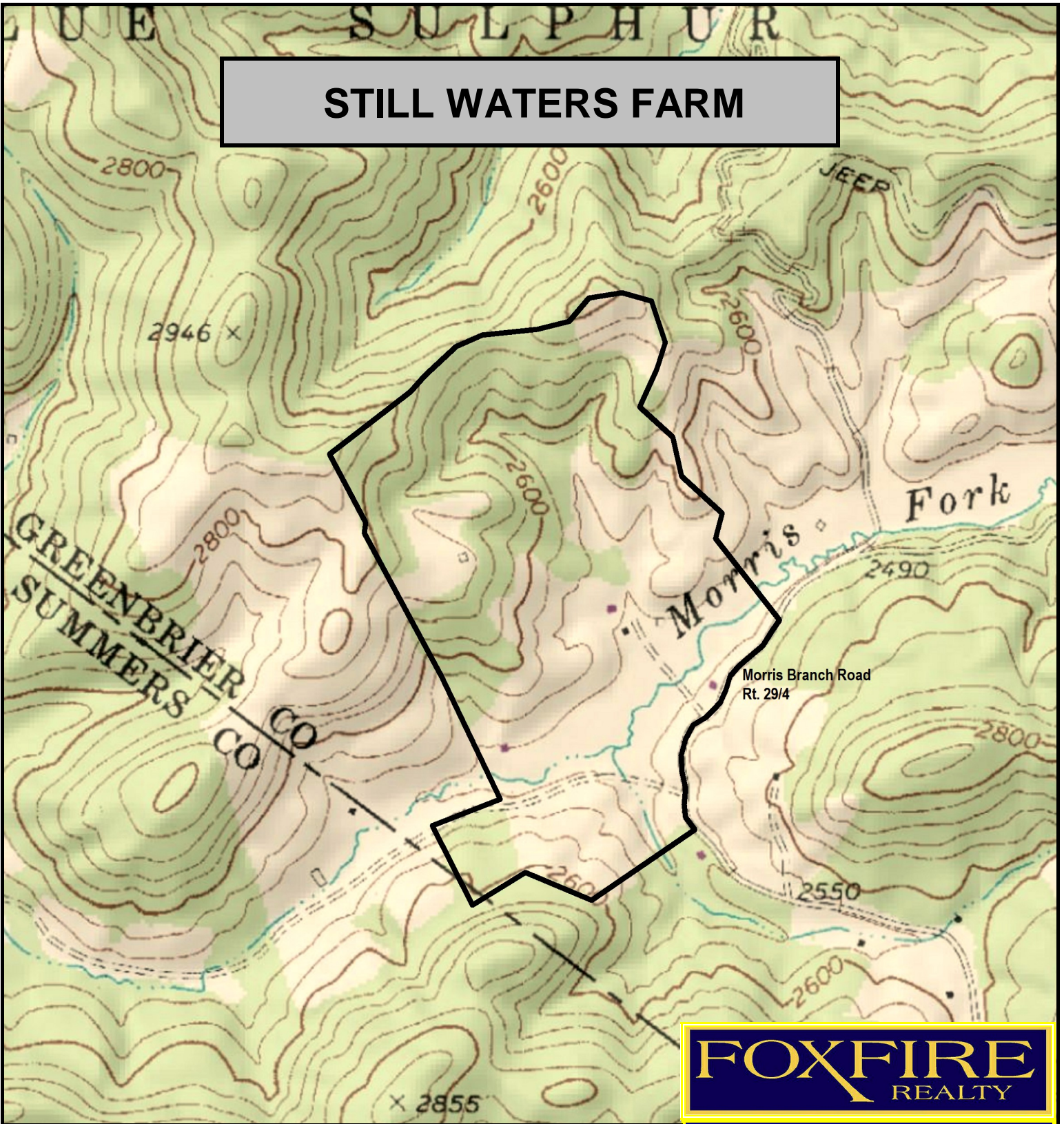
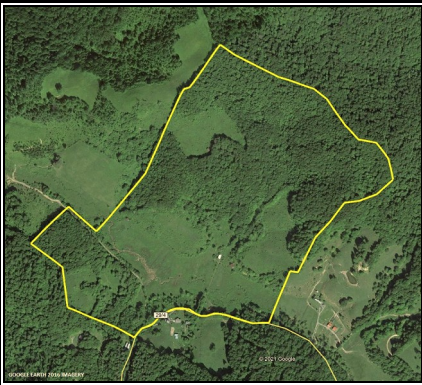


STILL WATERS FARM



FOXFIRE
REALTY



STILL WATERS FARM, Greenbrier County, WV (topographic map)
Elevation Range: 2470' - 2878' +/- Google Coordinates:
LAT 37.847962 (N), LON -80.760339 (W)
This map is for general location purposes only. Consult a licensed
land surveyor for actual boundary location and acreage.

RICHARD GRIST, Broker - Auctioneer - Forester
304.646.8837 Richard@Foxfirenation.com
WWW.FOXFIRENATION.COM

FOR TOPO MAP

SCALE 1:9600

1 INCH = 800 FT.

