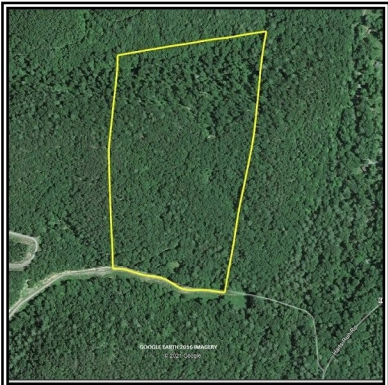
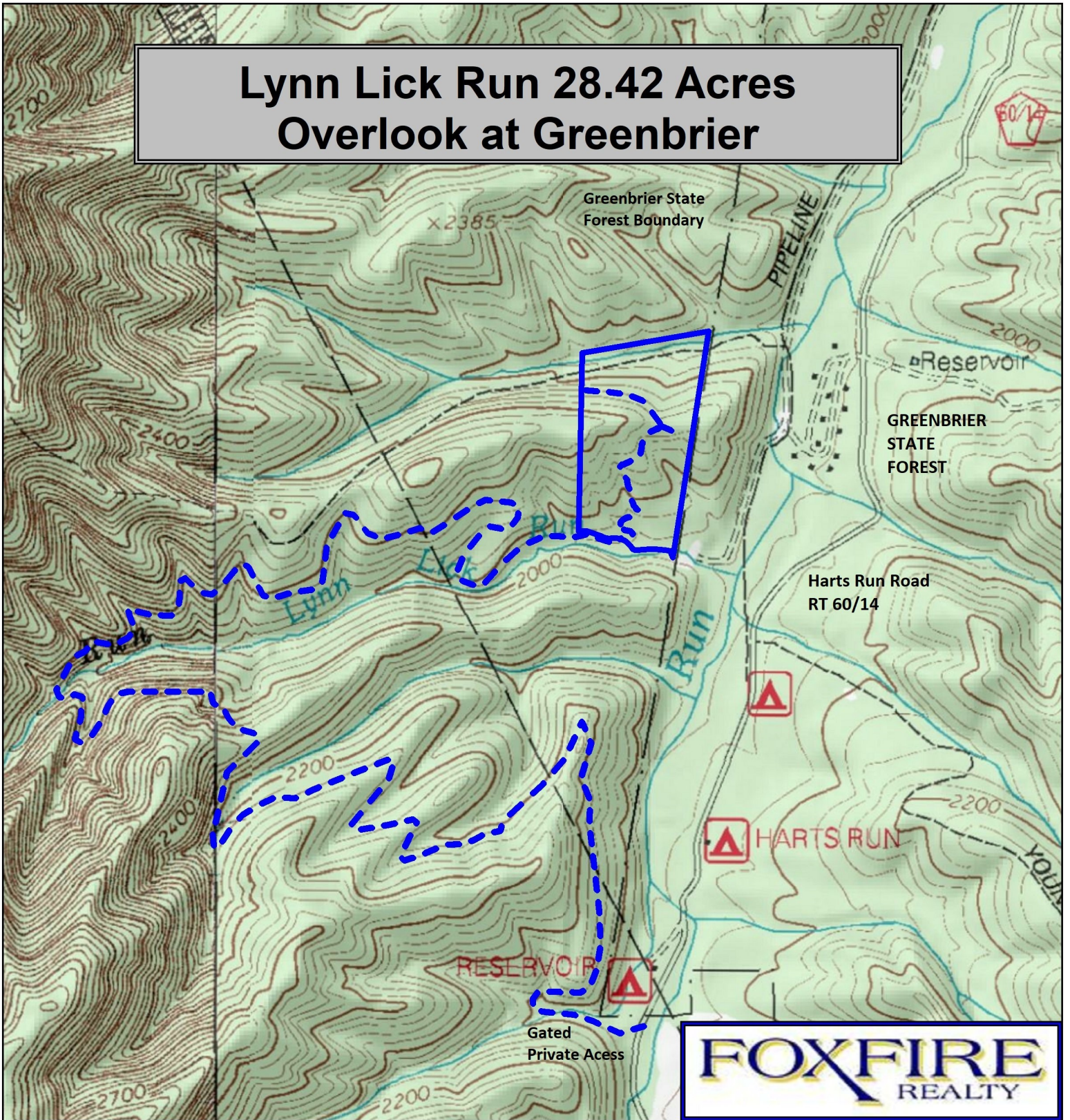


Lynn Lick Run 28.42 Acres Overlook at Greenbrier



Greenbrier County , WV Relief Map
 Elevation Range: 1960' to 2211'
 LAT 37.738262 (N), LON -80.363681 (W)
 This map is for general location purposes only. Consult a
 licensed land surveyor for actual boundary location and
 acreage.

RICHARD GRIST, Broker - Auctioneer - Forester
 304.646.8837 Richard@Foxfirenation.com
WWW.FOXFIRENATION.COM

