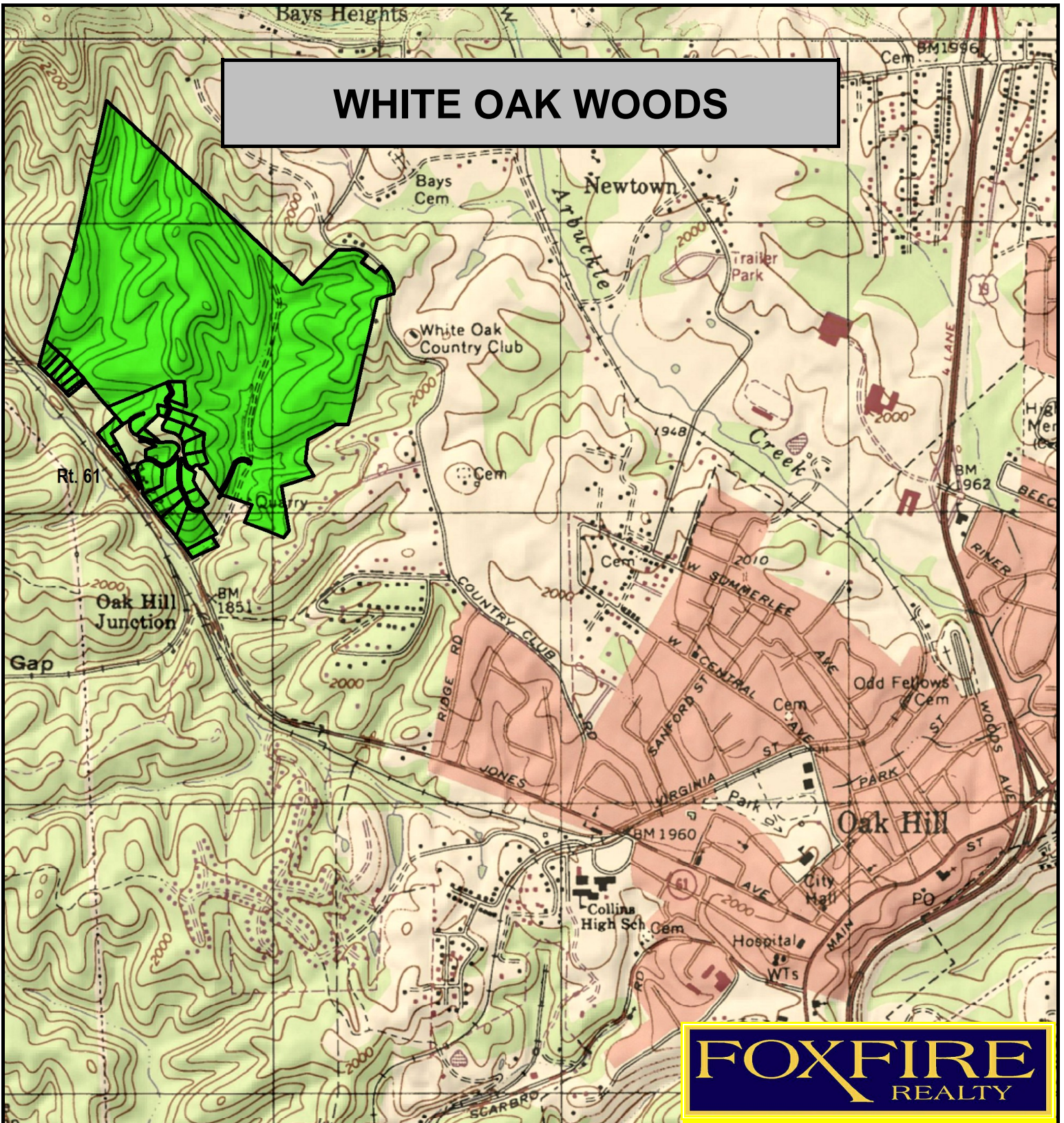


# WHITE OAK WOODS



**FOXFIRE**  
REALTY

WHITE OAK WOODS, Fayette County, WV (LOCATION MAP 2)  
Elevation Range: 1856' - 2065' +/- Google Coordinates:  
LAT 37.986123 (N), LON -81.175969 (W)  
This map is for general location purposes only. Consult a licensed land  
surveyor for actual boundary location and acreage.

RICHARD GRIST, Broker - Auctioneer - Forester  
304.646.8837 Richard@Foxfirenation.com  
WWW.FOXFIRENATION.COM

FOR TOPO MAP

SCALE 1:18000

1 INCH = 1,500 FT.

0 1000 2000 3000 4000 5000 6000  
Feet

0 1  
Mile

