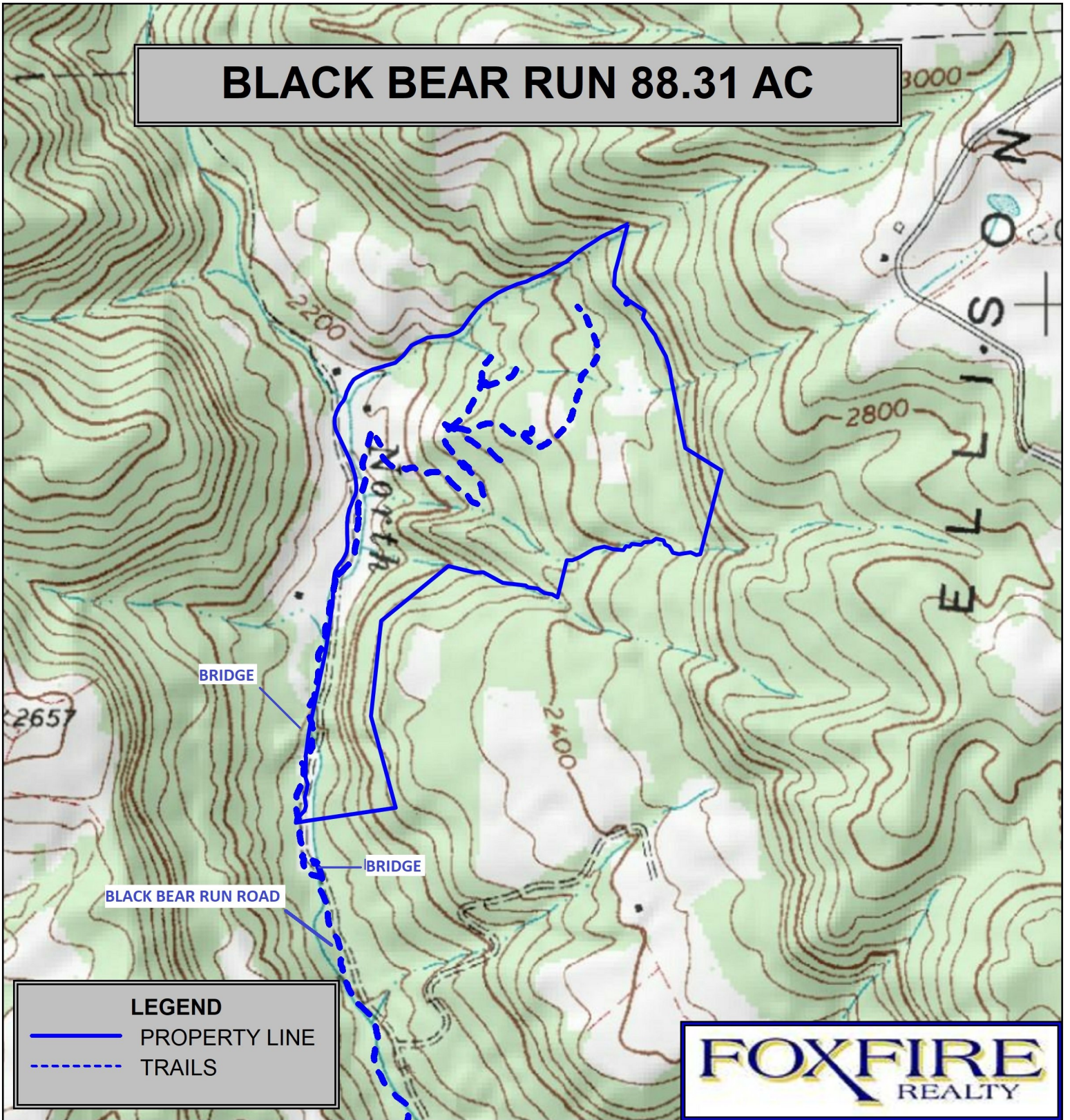


BLACK BEAR RUN 88.31 AC



LEGEND

- PROPERTY LINE
- - - TRAILS

FOXFIRE
REALTY

Summers County, WV Relief Map
Elevation Range: 2080' to 2675'
LAT 37.574841 (N), LON -81.057055 (W)
This map is for general location purposes only. Consult a
licensed land surveyor for actual boundary location and
acreage.

RICHARD GRIST, Broker - Auctioneer - Forester
304.646.8837 Richard@Foxfirenation.com
WWW.FOXFIRENATION.COM

FOR TOPO MAP SCALE 1:9,600 1 INCH = 800 FT.

