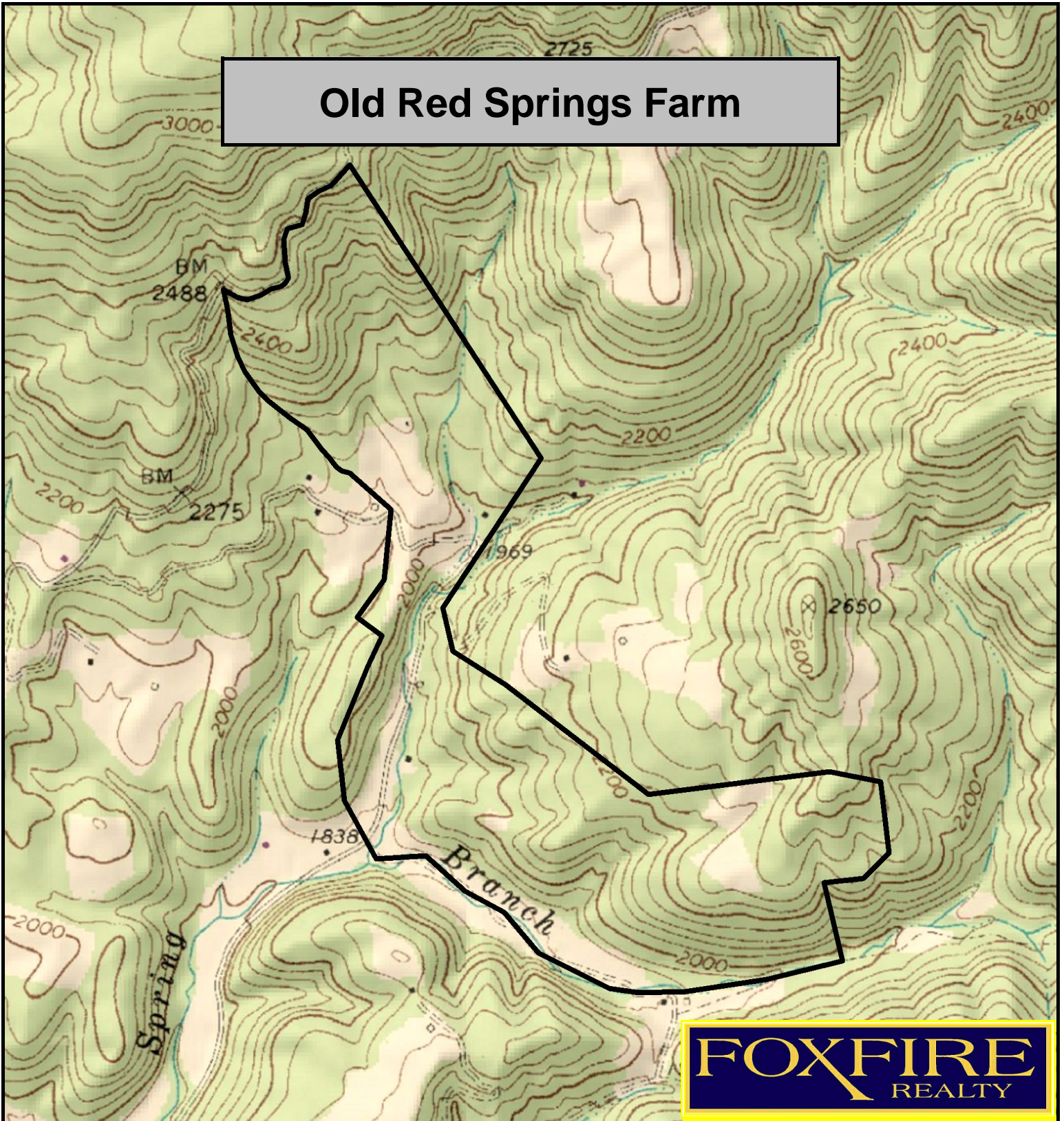


Old Red Springs Farm



FOXFIRE
REALTY

Old Red Springs Farm, Summers County, WV
TOPOGRAPHIC MAP
Elevation Range: 1843' - 22650 +/-
Google Coordinates: LAT 37.801054 (N), LON -80.771839 (W)
This map is for general location purposes only. Consult a licensed land
surveyor for actual boundary location and acreage.

RICHARD GRIST, Broker - Auctioneer - Forester
304.646.8837 Richard@Foxfirenation.com
WWW.FOXFIRENATION.COM

