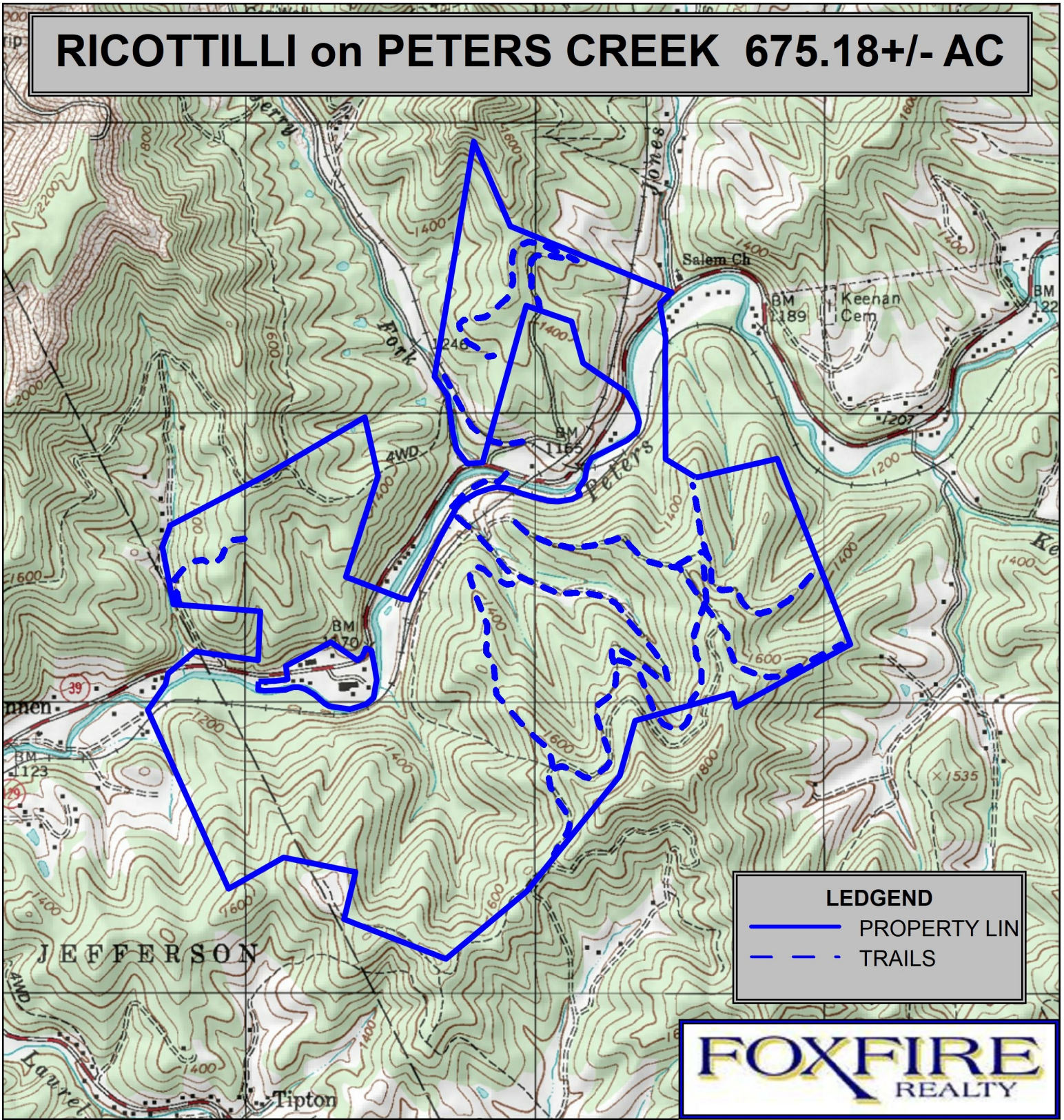




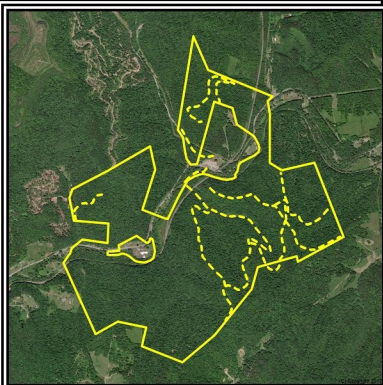
RICOTTILLI on PETERS CREEK 675.18+/- AC



LEDGEND

-  PROPERTY LIN
-  TRAILS

FOXFIRE
REALTY



Nicholas County, WV Relief Map
Elevation Range: 3450' to 3600'
LAT 38.279204 (N), LON -80.978178 (W)
This map is for general location purposes only.
Consult a licensed land surveyor for actual boundary
location and acreage.

RICHARD GRIST, Broker - Auctioneer - Forester
304.646.8837 Richard@Foxfirenation.com
WWW.FOXFIRENATION.COM

FOR TOPO MAP SCALE 1:18,000 1 INCH = 1,500 FT.

