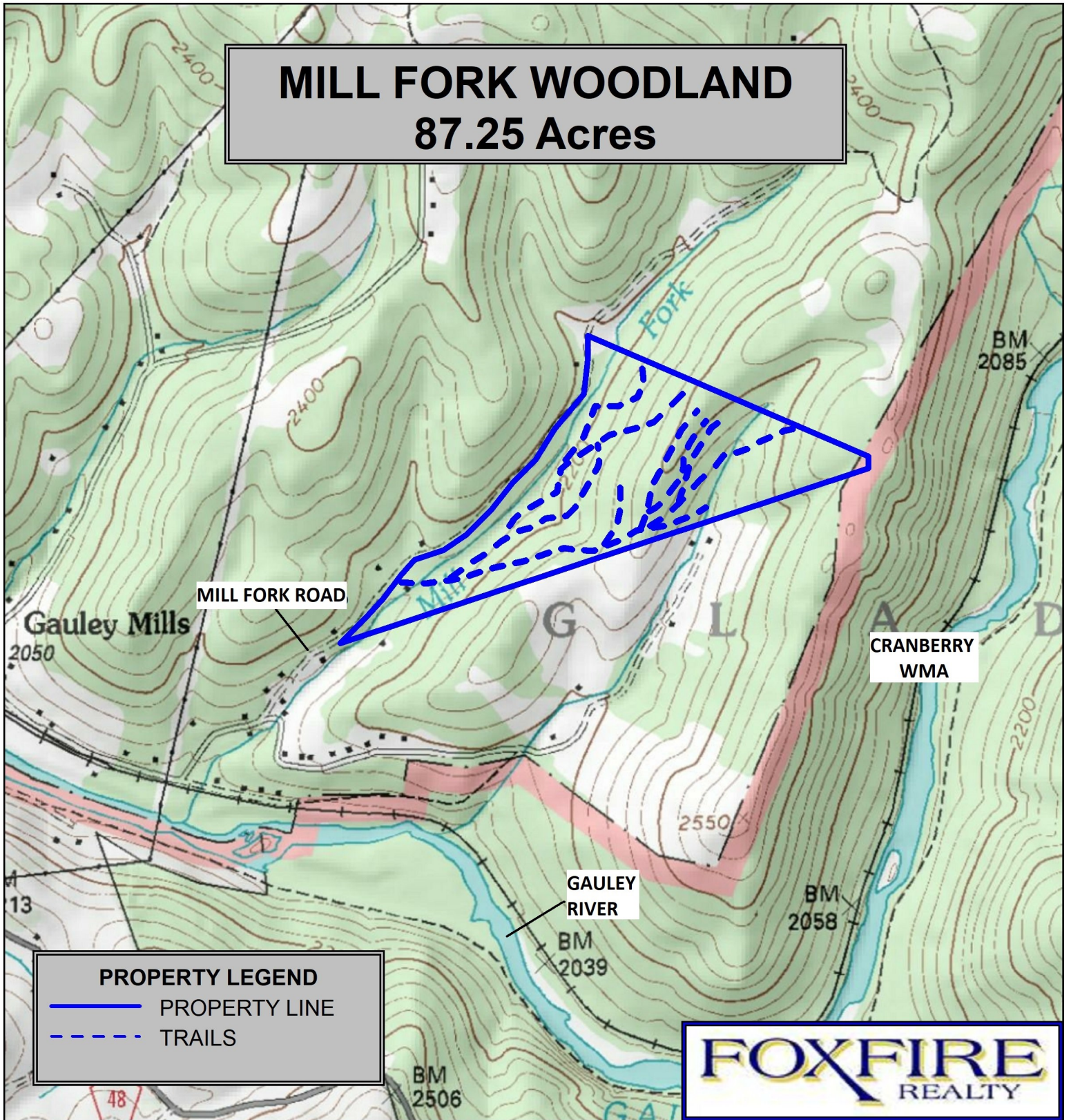


MILL FORK WOODLAND 87.25 Acres



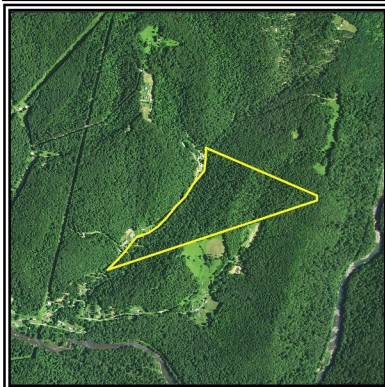
PROPERTY LEGEND

- PROPERTY LINE
- TRAILS

FOXFIRE
REALTY

Webster County, WV Relief Map
Elevation Range: 2130' to 2510'
LAT 38.361678 (N), LON -80.573944 (W)
This map is for general location purposes only. Consult a
licensed land surveyor for actual boundary location and
acreage.

RICHARD GRIST, Broker - Auctioneer - Forester
304.646.8837 Richard@Foxfirenation.com
WWW.FOXFIRENATION.COM



FOR TOPO MAP SCALE 1:12,000 1 INCH = 1,000 FT.

