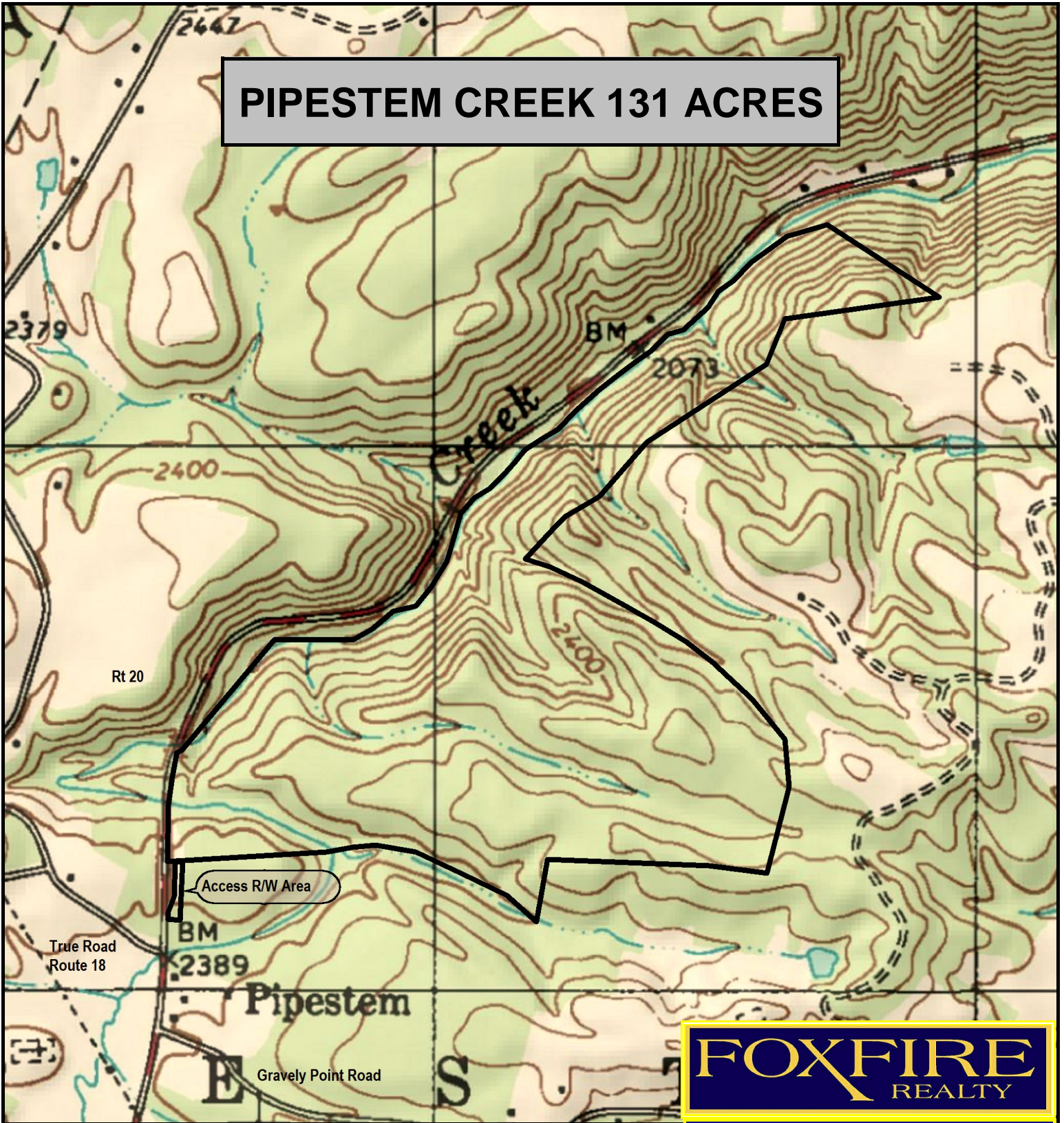
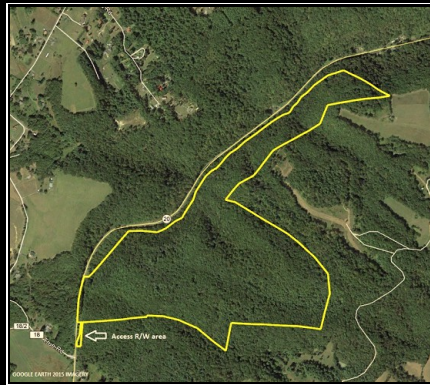


PIPESTEM CREEK 131 ACRES



FOXFIRE
REALTY



PIPESTEM CREEK 131 ACRES, Summers County, WV (topographic map)
Elevation Range: 2116' - 2554' +/-; Google Coordinates:
LAT 37.547420 (N), LON -80.960030 (W)
This map is for general location purposes only. Consult a licensed land
surveyor for actual boundary location and acreage.

RICHARD GRIST, Broker - Auctioneer - Forester
304.646.8837 Richard@Foxfirenation.com
WWW.FOXFIRENATION.COM

