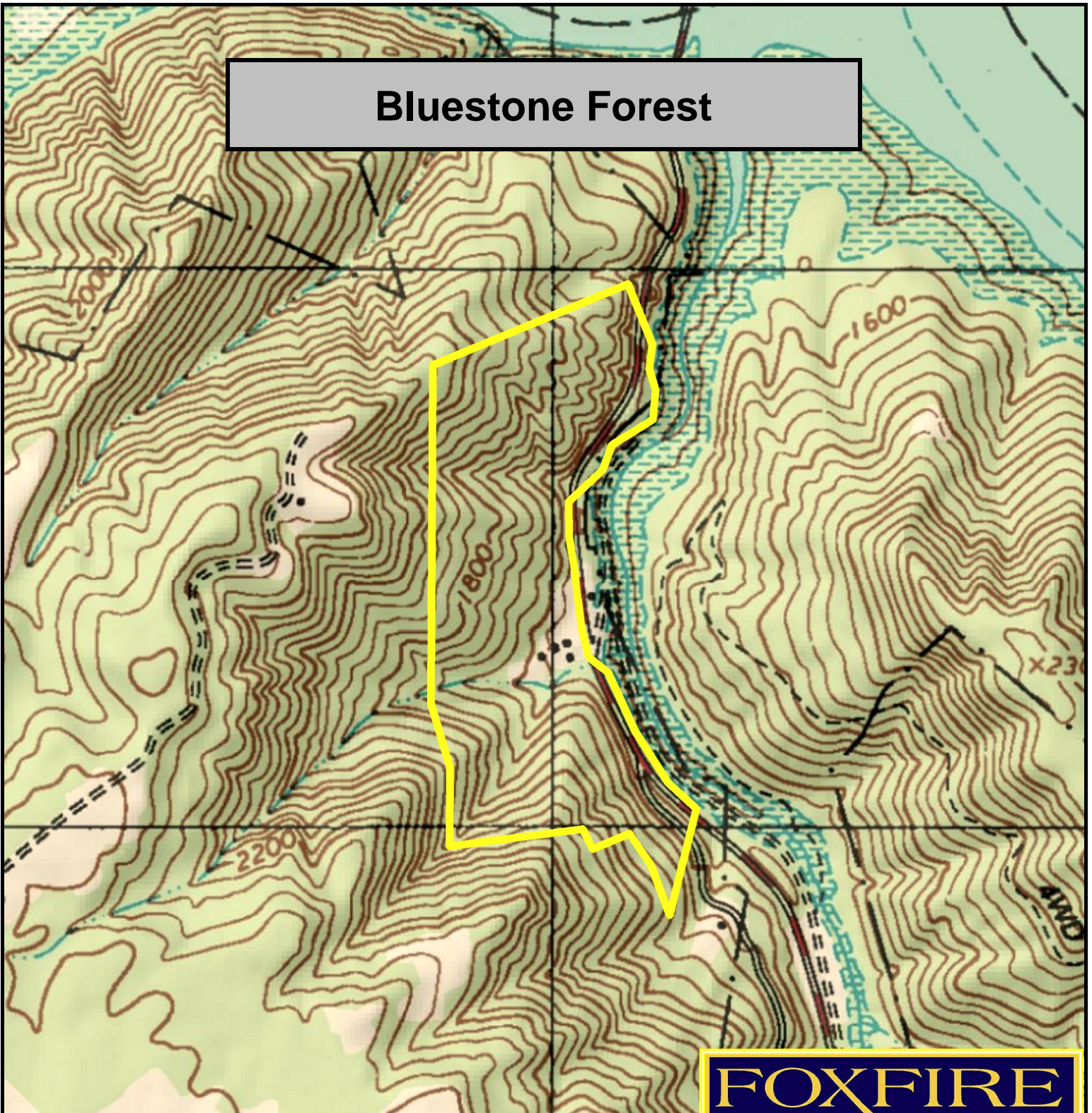


Bluestone Forest



PROPERTY DEPICTION SHOWN IN YELLOW IS DERIVED FROM A SURVEY PLAT.

FOX FIRE
REALTY

Bluestone Forest, Summers County, WV
TOPOGRAPHIC MAP
Elevation Range: 1578' - 2112' +/-
Google Coordinates: LAT 37.600914 (N), LON -80.920120 (W)
This map is for general location purposes only. Consult a licensed
land surveyor for actual boundary location and acreage.

RICHARD GRIST, Broker - Auctioneer - Forester
304.646.8837 Richard@Foxfirenation.com
WWW.FOXFIRENATION.COM

