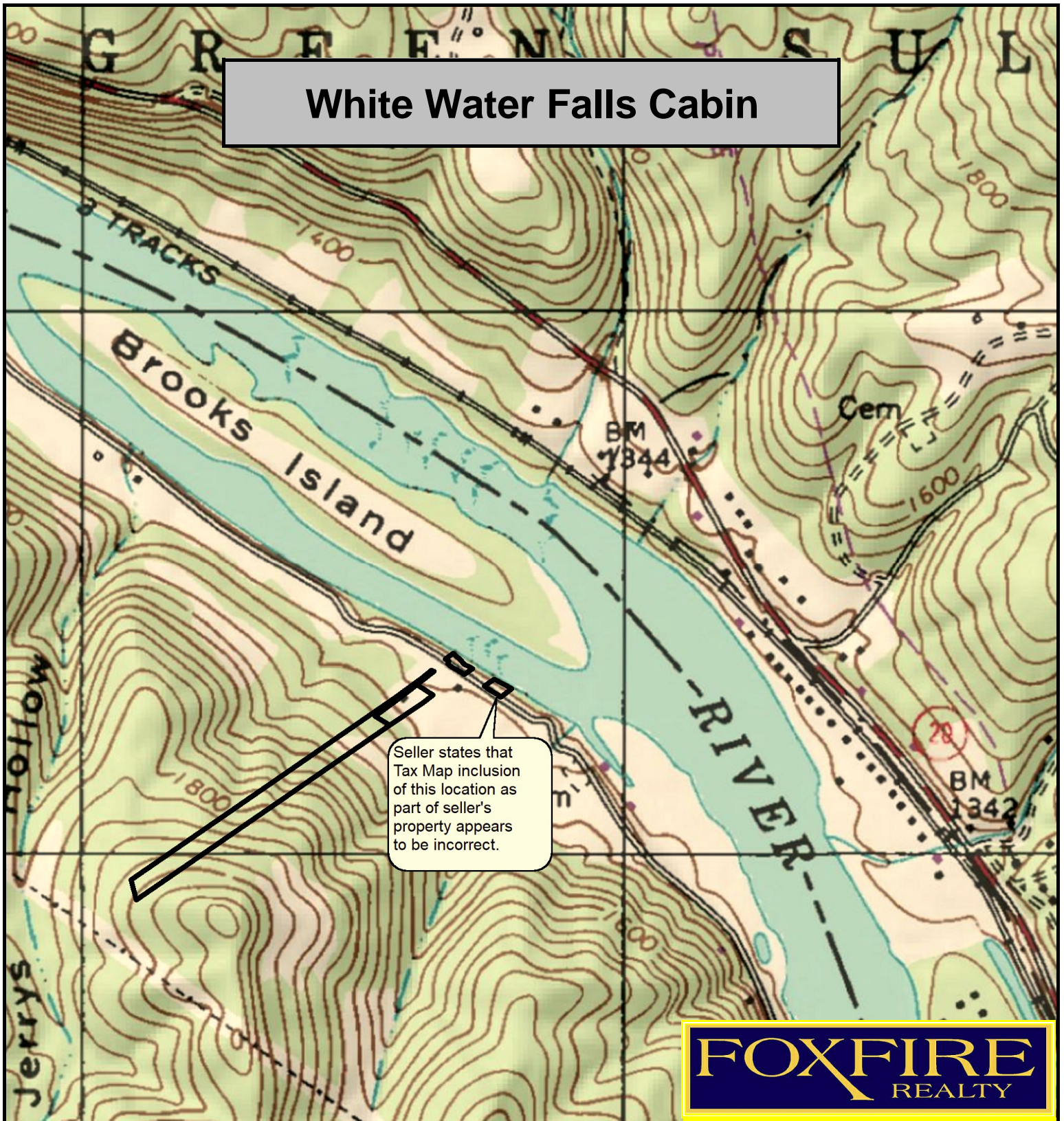


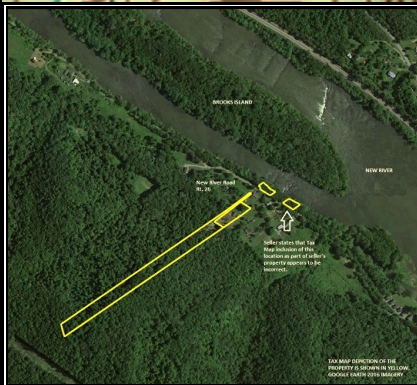
# White Water Falls Cabin



**FOXFIRE**  
REALTY

White Water Falls Cabin, Raleigh County, WV  
TOPOGRAPHIC MAP  
Elevation Range: 1341' - 2031' +/-  
Google Coordinates: LAT 37.726670 (N), LON -80.902275 (W)  
This map is for general location purposes only. Consult a licensed land  
surveyor for actual boundary location and acreage.  
TAX MAP DEPICTION OF THE PROPERTY IS SHOWN IN BLACK.

RICHARD GRIST, Broker - Auctioneer - Forester  
304.646.8837 Richard@Foxfirenation.com  
WWW.FOXFIRENATION.COM



FOR TOPO MAP

SCALE 1:9600

1 INCH = 800 FT.

