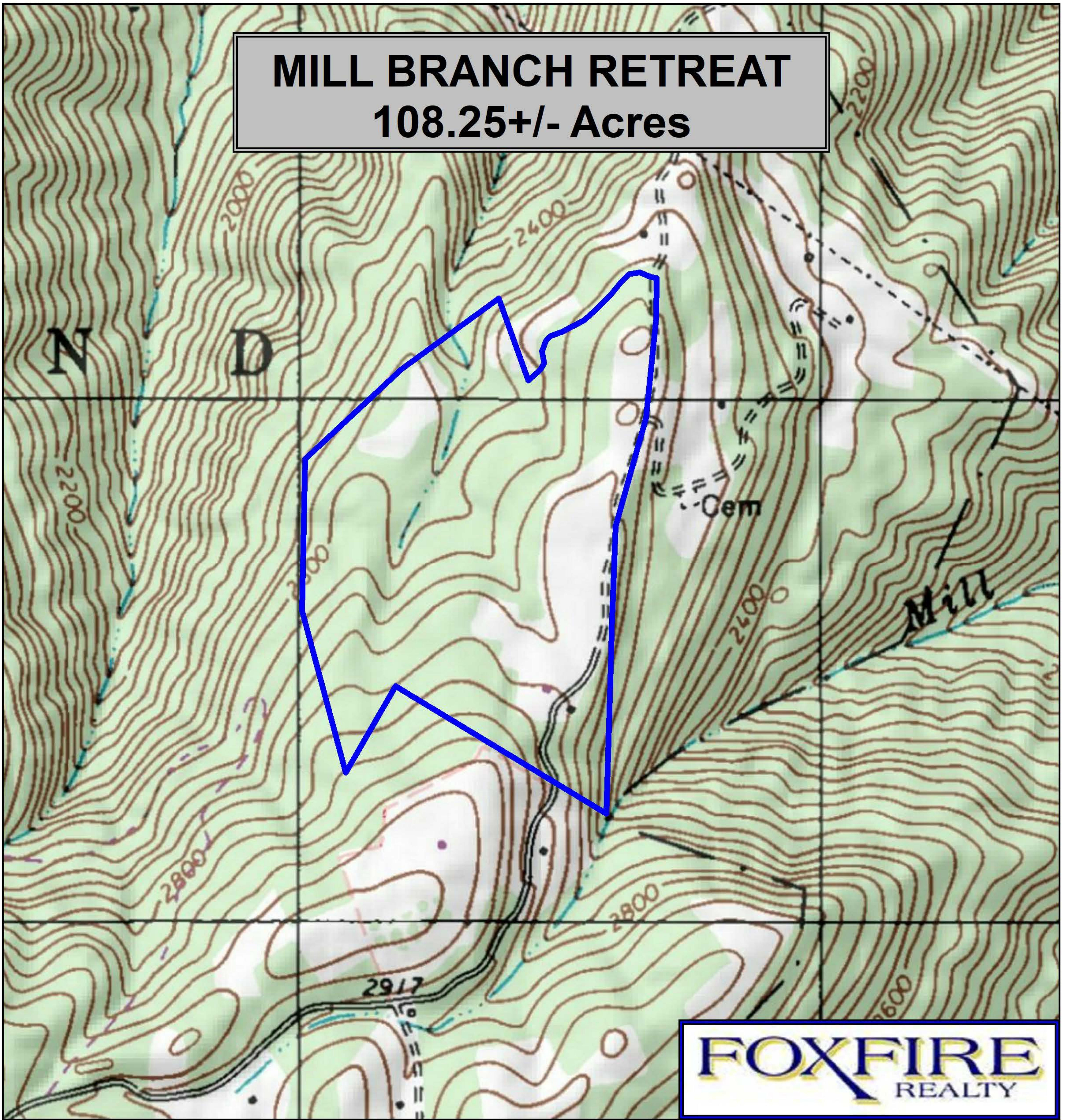


MILL BRANCH RETREAT

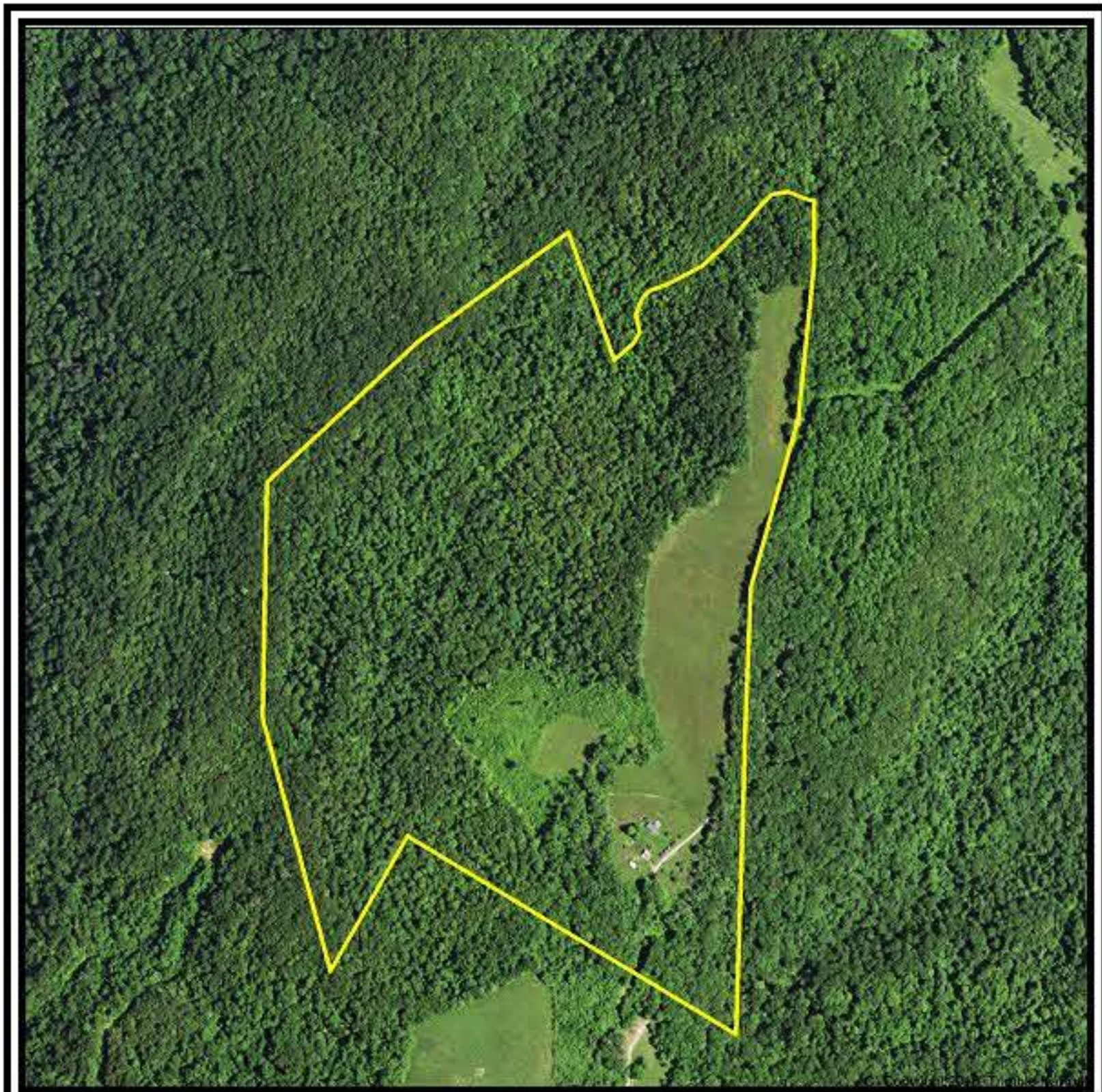
108.25+/- Acres



FOXFIRE
REALTY

Raleigh County, WV Relief Map
Elevation Range: 2525' to 2860'
LAT 37.727909 (N), LON -80.937561 (W)
This map is for general location purposes only.
Consult a licensed land surveyor for actual boundary
location and acreage.

RICHARD GRIST, Broker - Auctioneer - Forester
304.646.8837 Richard@Foxfirenation.com
WWW.FOXFIRENATION.COM



FOR TOPO MAP SCALE 1:10,000 1 INCH = 833 FT.

