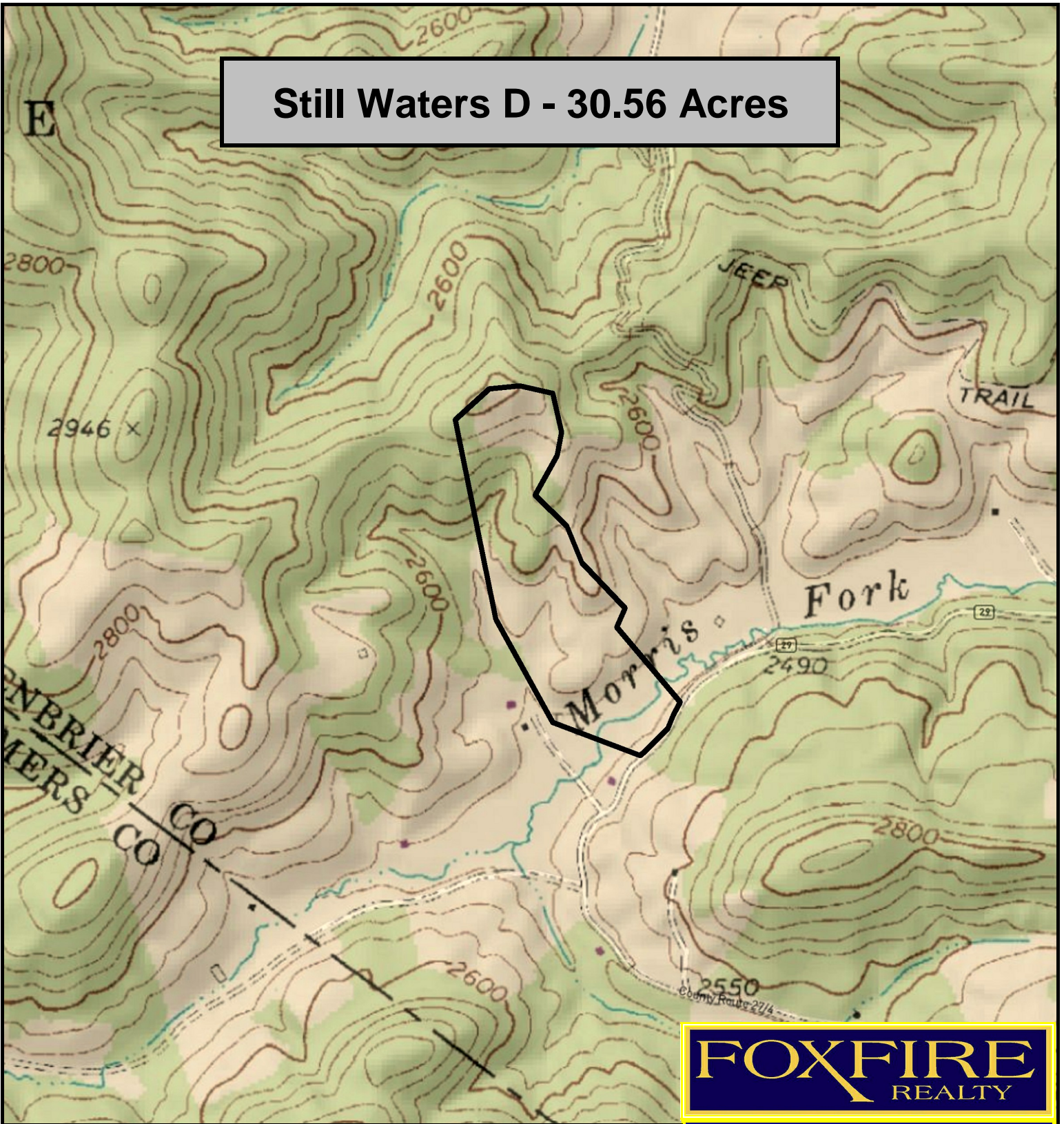
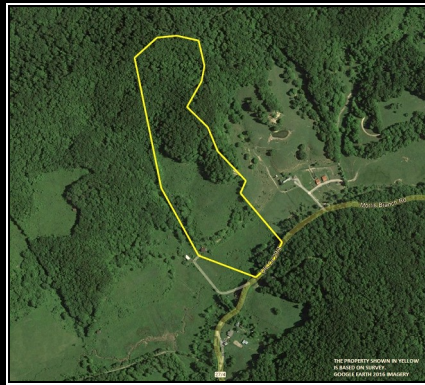


Still Waters D - 30.56 Acres



FOXFIRE
REALTY



Still Waters D, Greenbrier County, WV
TOPOGRAPHIC MAP
Elevation Range: 2470' - 2821' +/-; Google Coordinates:
LAT 37.849083 (N), LON -80.759153 (W)
This map is for general location purposes only. Consult a licensed
land surveyor for actual boundary location and acreage.

RICHARD GRIST, Broker - Auctioneer - Forester
304.646.8837 Richard@Foxfirenation.com
WWW.FOXFIRENATION.COM

FOR TOPO MAP SCALE 1:9600 1 INCH = 800 FT.

