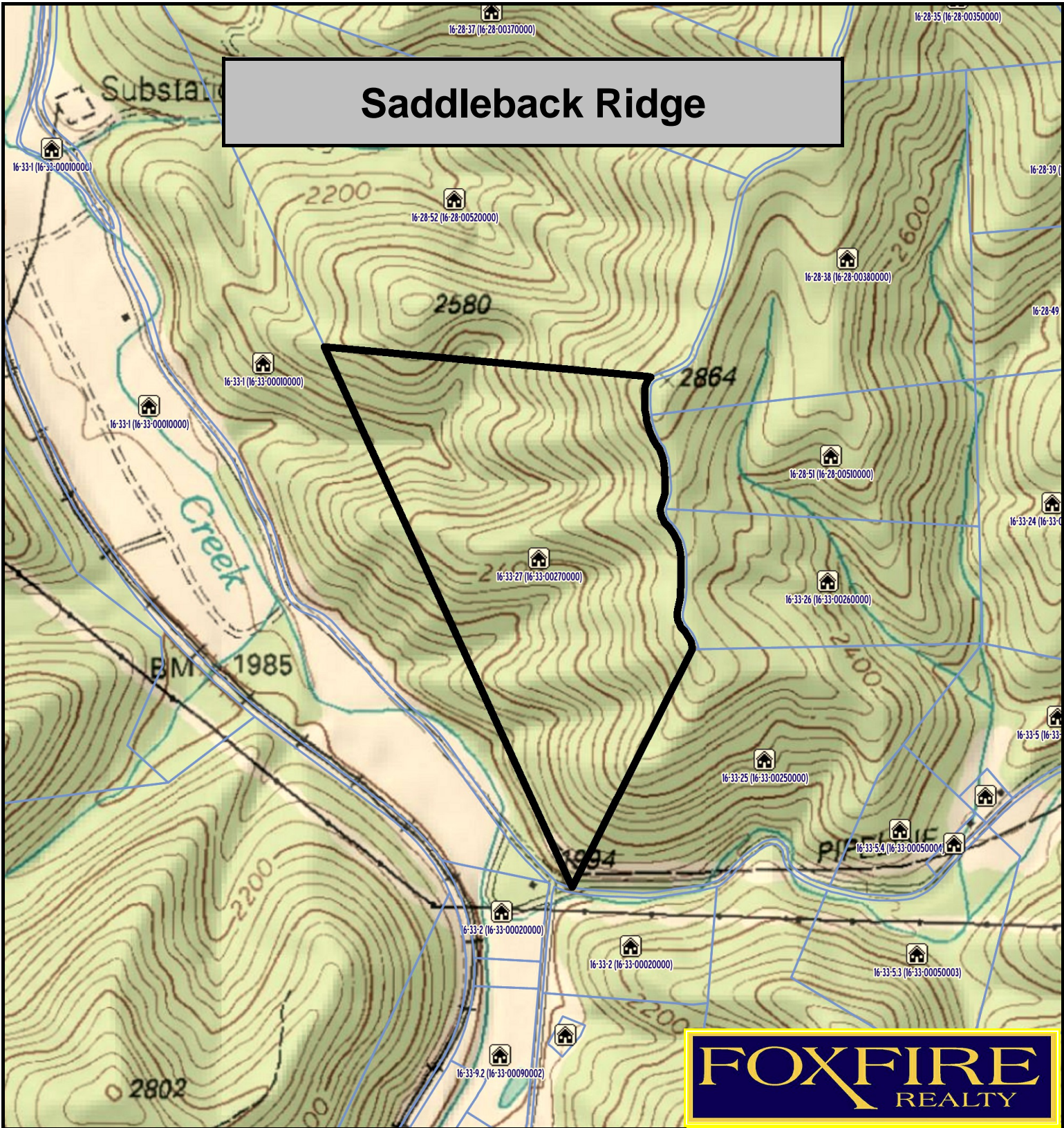


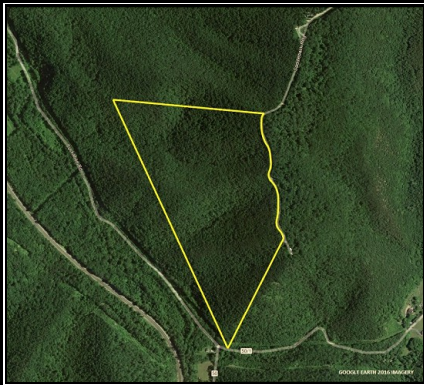
Saddleback Ridge



FOXFIRE
REALTY

Saddleback Ridge, Greenbrier County, WV
TOPOGRAPHIC MAP
Elevation Range: 2043' - 2801' +/-
Google Coordinates: LAT 37.768059 (N), LON -80.268874 (W)
This map is for general location purposes only. Consult a licensed land
surveyor for actual boundary location and acreage.

RICHARD GRIST, Broker - Auctioneer - Forester
304.646.8837 Richard@Foxfirenation.com
WWW.FOXFIRENATION.COM



FOR TOPO MAP SCALE 1:9600 1 INCH = 800 FT.

