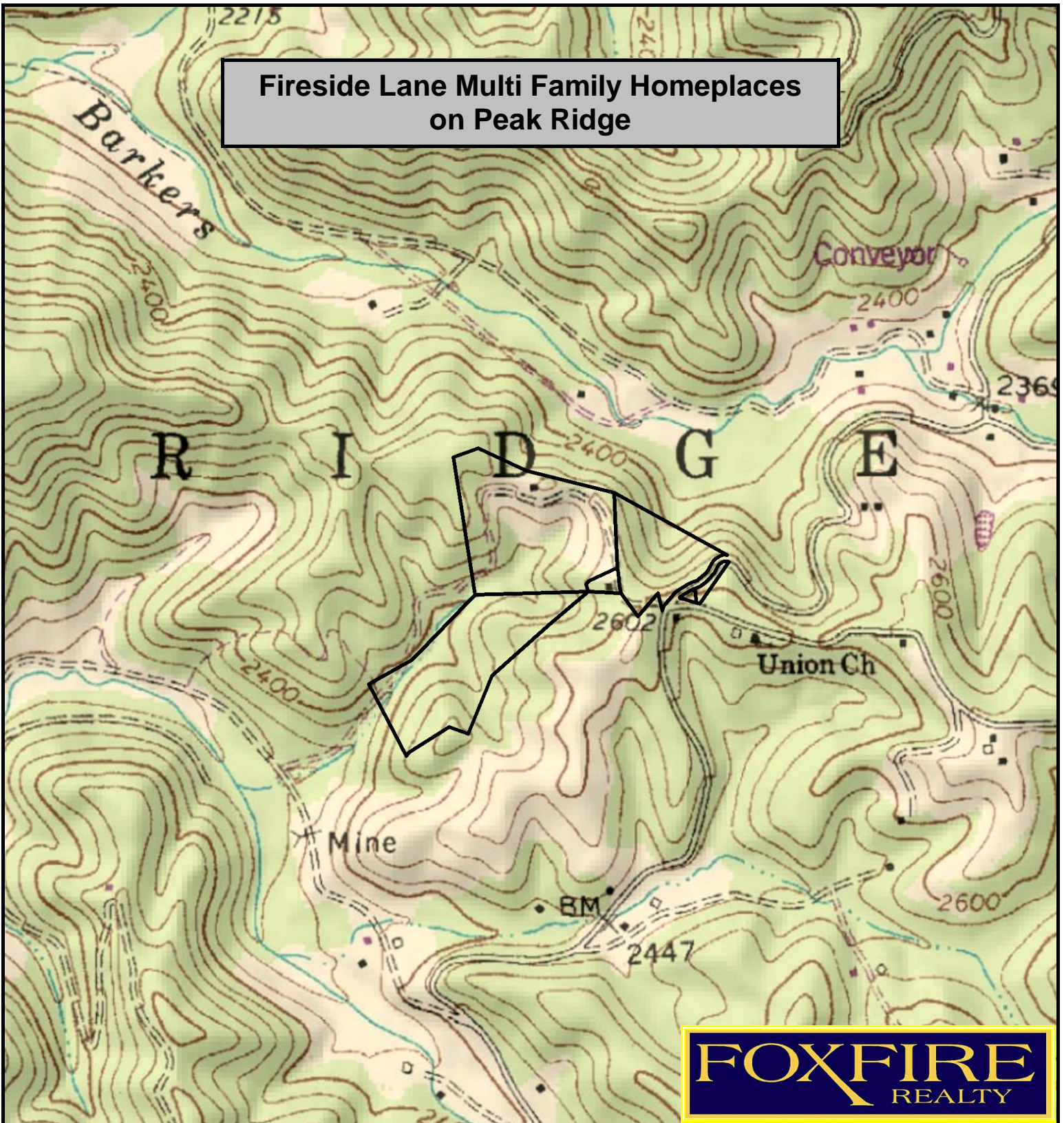


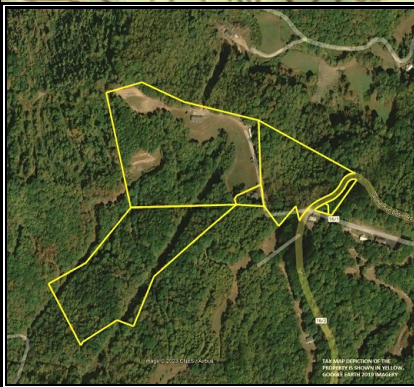
Fireside Lane Multi Family Homeplaces on Peak Ridge



FOXFIRE
REALTY

Fireside Lane, Womung County, WV
TOPOGRAPHIC MAP
Elevation Range: 2365' - 2561' +/-
Google Coordinates: LAT 37.529573 (N), LON -81.303024 (W)
This map is for general location purposes only. Consult a licensed land
surveyor for actual boundary location and acreage.

RICHARD GRIST, Broker - Auctioneer - Forester
304.646.8837 Richard@Foxfirenation.com
WWW.FOXFIRENATION.COM



FOR TOPO MAP

SCALE 1:9600

1 INCH = 800 FT.

