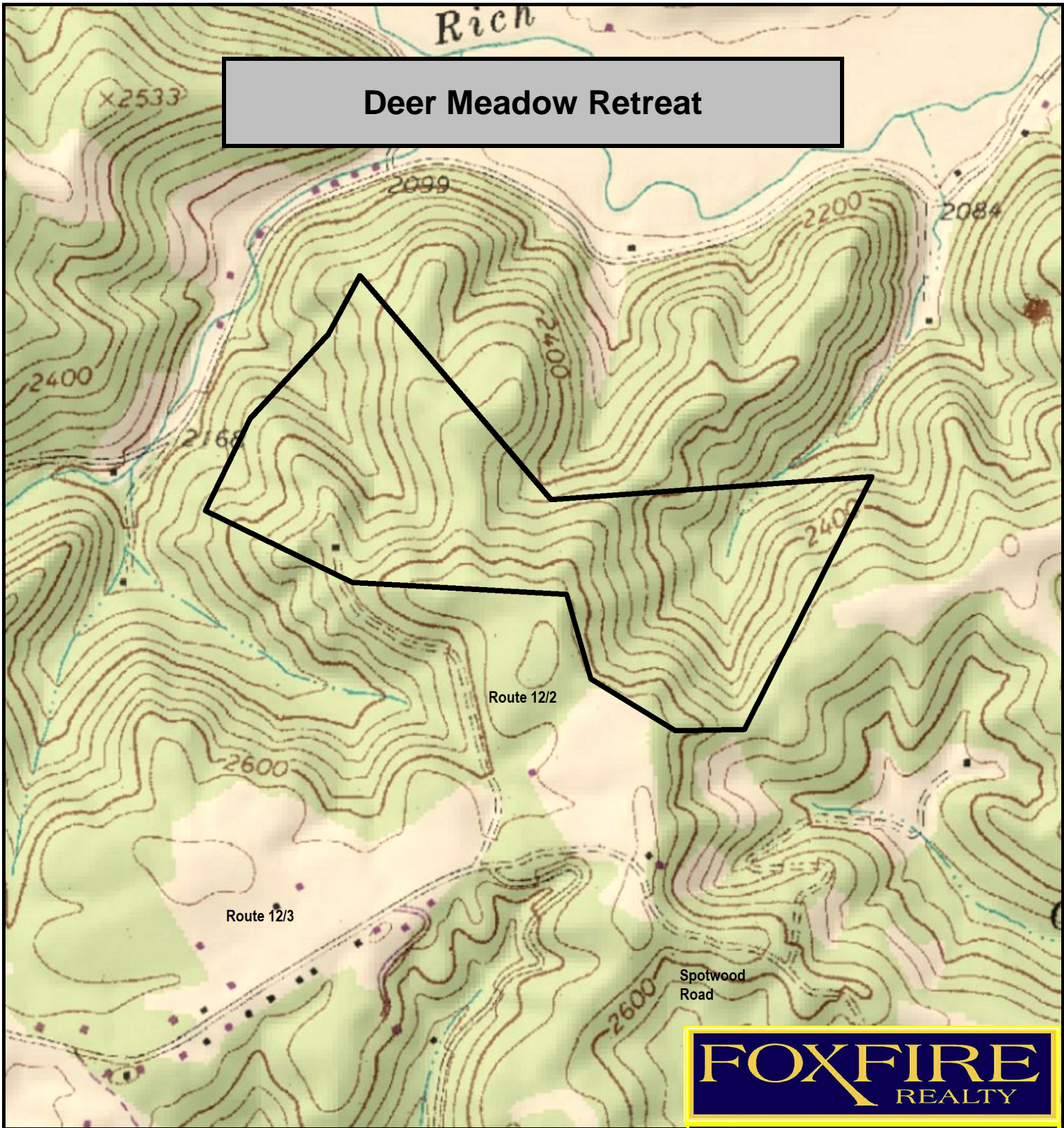
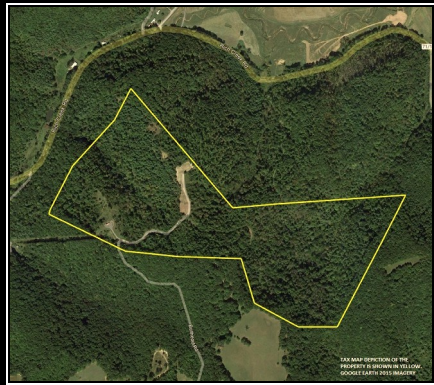


Deer Meadow Retreat



FOXFIRE
REALTY



Deer Meadow Retreat, Mercer County, WV
TOPOGRAPHIC MAP
Elevation Range: 2256' - 2673' +/-
Google Coordinates: LAT 37.432086 (N), LON -81.161932 (W)
This map is for general location purposes only. Consult a licensed land surveyor for actual boundary location and acreage.
TAX MAP DEPICTION OF THE PROPERTY IS SHOWN.

RICHARD GRIST, Broker - Auctioneer - Forester
304.646.8837 Richard@Foxfirenation.com
WWW.FOXFIRENATION.COM

