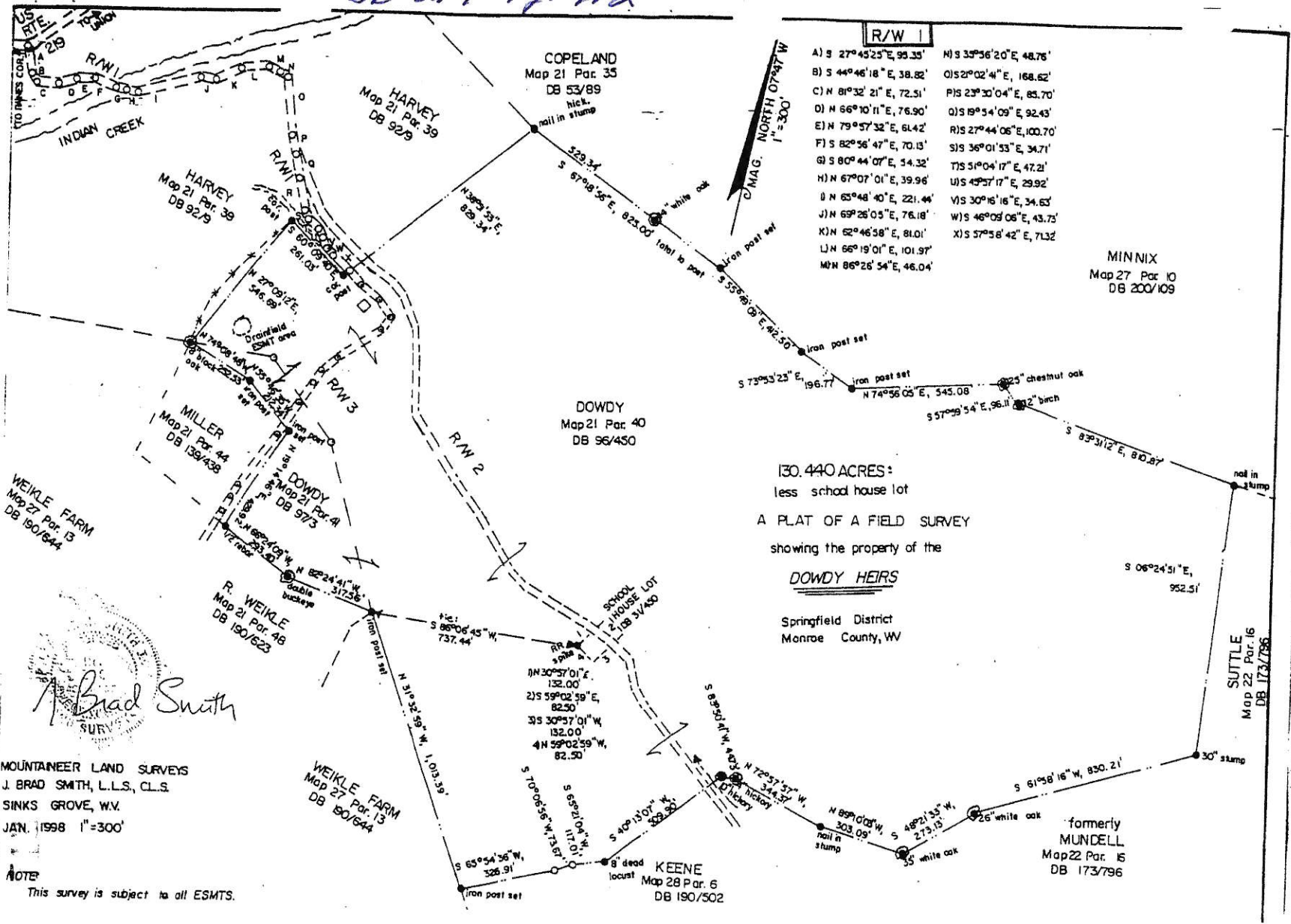


DB 217 Pg. 712



R/W 1

- A) S 27°45'25" E, 99.35'
- B) S 44°46'18" E, 38.82'
- C) N 81°32'21" E, 72.51'
- D) N 66°10'11" E, 76.90'
- E) N 79°57'32" E, 61.42'
- F) S 82°56'47" E, 70.13'
- G) S 80°44'07" E, 54.32'
- H) N 67°07'01" E, 39.96'
- I) N 65°48'40" E, 221.44'
- J) N 69°26'05" E, 76.18'
- K) N 62°46'58" E, 81.01'
- L) N 66°19'01" E, 101.97'
- M) N 86°26'54" E, 46.04'
- N) S 39°36'20" E, 48.76'
- O) S 2°02'41" E, 168.62'
- P) S 23°30'04" E, 85.70'
- Q) S 19°54'09" E, 92.43'
- R) S 27°44'06" E, 100.70'
- S) S 36°01'53" E, 34.71'
- T) S 51°04'17" E, 47.21'
- U) S 49°57'17" E, 29.92'
- V) S 30°16'16" E, 34.63'
- W) S 46°09'06" E, 43.73'
- X) S 57°58'42" E, 71.32'

130.440 ACRES:  
less school house lot  
A PLAT OF A FIELD SURVEY  
showing the property of the  
DOWDY HEIRS  
Springfield District  
Monroe County, WV

Brad Smith

MOUNTAINEER LAND SURVEYS  
J. BRAD SMITH, L.L.S., C.L.S.  
SINKS GROVE, W.V.  
JAN. 1998 1"=300'

NOTE  
This survey is subject to all ESMTs.