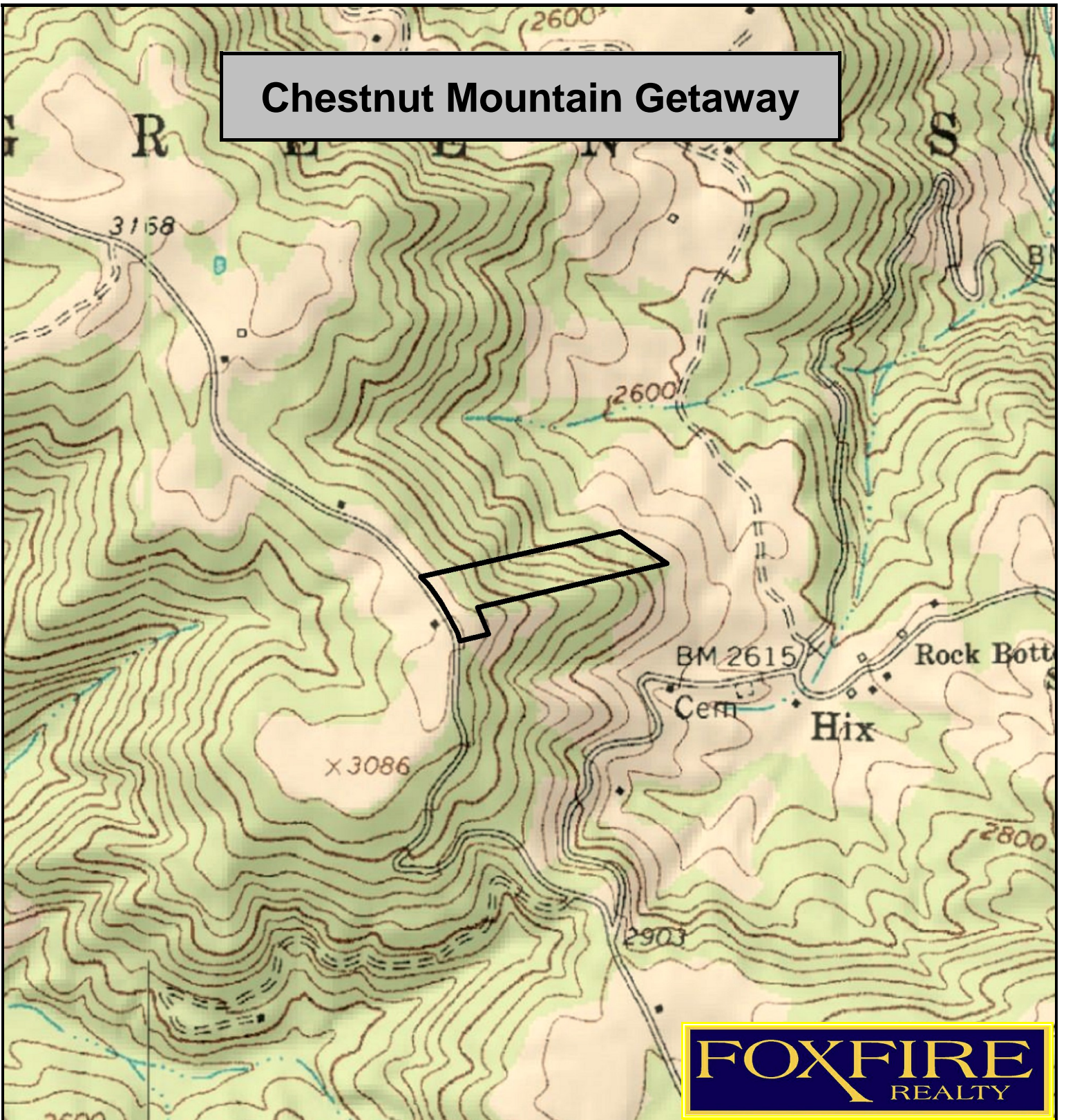
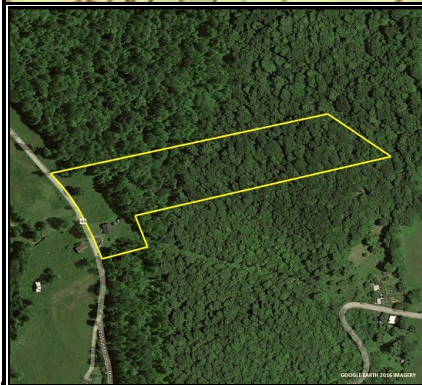


Chestnut Mountain Getaway



FOX FIRE
REALTY



Chestnut Mountain Getaway, Summers County, WV
TOPOGRAPHIC MAP
Elevation Range: 2751' - 3090' +/-
Google Coordinates: LAT 37.730303 (N), LON -80.826893 (W)
This map is for general location purposes only. Consult a licensed land surveyor for actual boundary location and acreage.

RICHARD GRIST, Broker - Auctioneer - Forester
304.646.8837 Richard@Foxfirenation.com
WWW.FOXFIRENATION.COM

FOR TOPO MAP

SCALE 1:9600

1 INCH = 800 FT.

