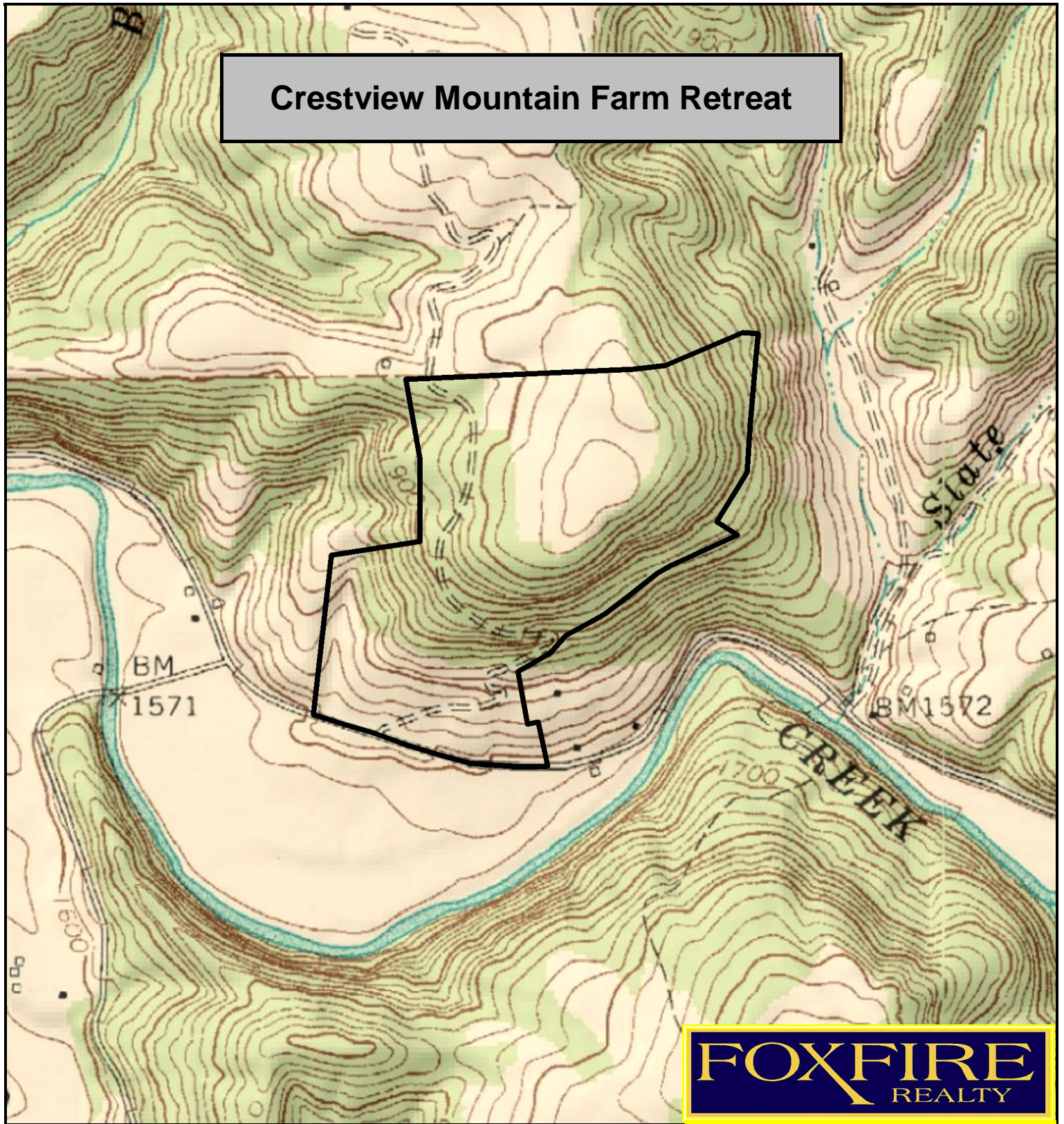


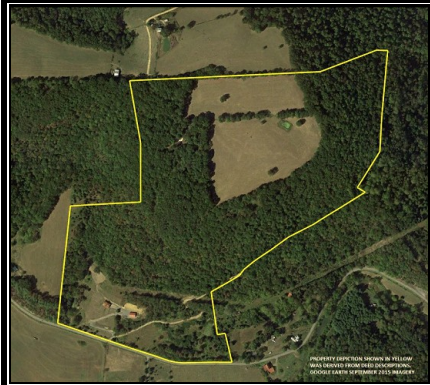
Crestview Mountain Farm Retreat



FOX FIRE
REALTY

Crestview Mountain Farm Retreat, Monroe County, WV
TOPOGRAPHIC MAP
Elevation Range: 1623' - 2057' +/-
Google Coordinates: LAT 37.553780 (N), LON -80.719907 (W)
This map is for general location purposes only. Consult a licensed land
surveyor for actual boundary location and acreage.

RICHARD GRIST, Broker - Auctioneer - Forester
304.646.8837 Richard@Foxfirenation.com
WWW.FOXFIRENATION.COM



FOR TOPO MAP SCALE 1:9600 1 INCH = 800 FT.

