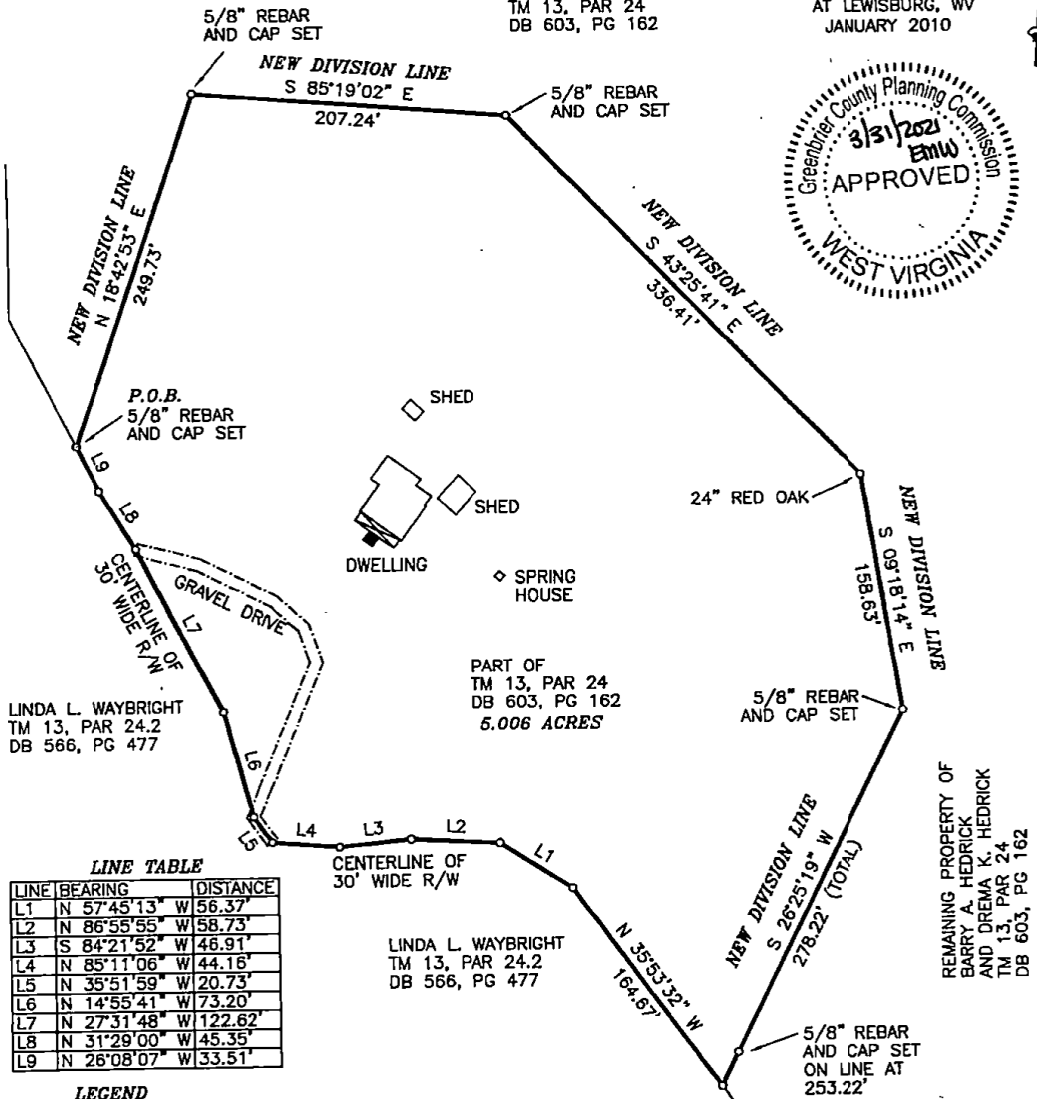


OUTSIDE BOUNDARY BASED ON SURVEY BY
CORE ENVIRONMENTAL SERVICES, INC. JULY 2018
FILE CABINET E-7

REMAINING PROPERTY OF
BARRY A. HEDRICK
AND DREMA K. HEDRICK
TM 13, PAR 24
DB 603, PG 162

MAGNETIC
MERIDIAN
DECLINATION 08°30' W
AT LEWISBURG, WV
JANUARY 2010



LINDA L. WAYBRIGHT
TM 13, PAR 24.2
DB 566, PG 477

PART OF
TM 13, PAR 24
DB 603, PG 162
5.006 ACRES

REMAINING PROPERTY OF
BARRY A. HEDRICK
AND DREMA K. HEDRICK
TM 13, PAR 24
DB 603, PG 162

LINE TABLE

LINE	BEARING	DISTANCE
L1	N 57°45'13" W	56.37'
L2	N 86°55'55" W	58.73'
L3	S 84°21'52" W	46.91'
L4	N 85°11'06" W	44.16'
L5	N 35°51'59" W	20.73'
L6	N 14°55'41" W	73.20'
L7	N 27°31'48" W	122.62'
L8	N 31°29'00" W	45.35'
L9	N 26°08'07" W	33.51'

LEGEND
 TM TAX MAP
 PAR PARCEL
 DB DEED BOOK
 PG PAGE
 R/W RIGHT-OF-WAY
 P. O. B. POINT OF BEGINNING

PLAT OF SURVEY AND DIVISION
FOR
BARRY A. HEDRICK AND DREMA K. HEDRICK

FRANKFORD DISTRICT, GREENBRIER COUNTY, WEST VIRGINIA

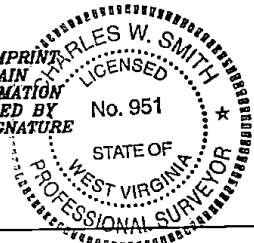
SCALE: 1 INCH = 100 FEET



MARCH 18, 2021

SURVEYED: MARCH 2021 BY:
GREENBRIER PROFESSIONAL
SURVEYING, PLLC
348 BLUE SULPHUR PIKE
LEWISBURG, WEST VIRGINIA

ALL PLATS THAT DO NOT SHOW A SEAL IMPRINT
AND SIGNATURE IN GREEN INK MAY CONTAIN
UNAUTHORIZED ALTERATIONS. ALL INFORMATION
SHOULD BE DISREGARDED UNLESS VERIFIED BY
THE PROFESSIONAL SURVEYOR WHOSE SIGNATURE
APPEARS.



Charles W. Smith
Charles W. Smith
Professional Surveyor # 951