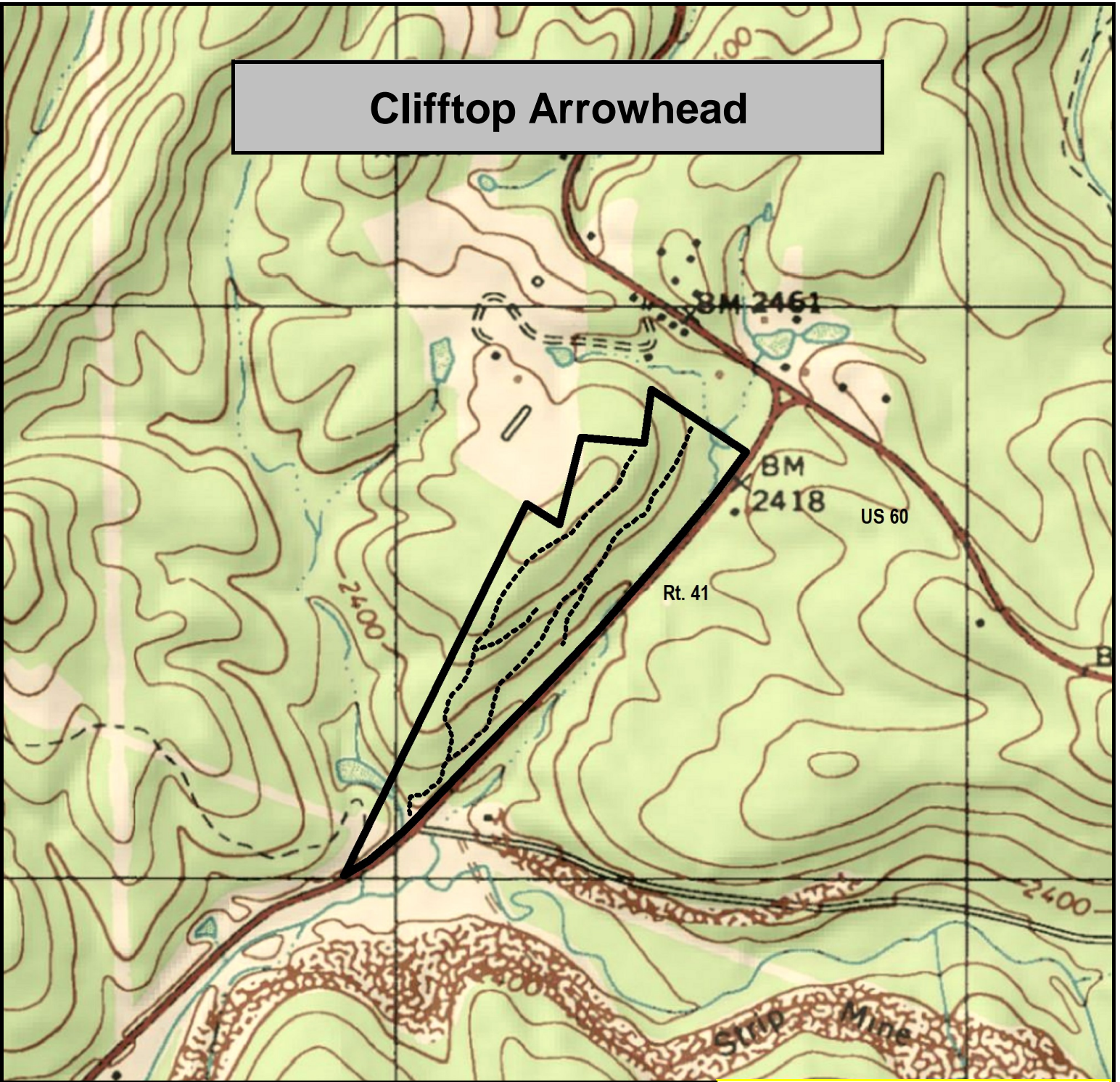


Clifftop Arrowhead



- property boundary approximate location
- - - trails of various condition

FOXFIRE
REALTY

Clifftop Arrowhead, Fayette County, WV
TOPOGRAPHIC MAP
Elevation Range: 2306' - 2524' +/-
Google Coordinates: LAT 38.013519 (N), LON -80.919675 (W)
This map is for general location purposes only. Consult a licensed land surveyor for actual boundary location and acreage.

RICHARD GRIST, Broker - Auctioneer - Forester
304.646.8837 Richard@Foxfirenation.com
WWW.FOXFIRENATION.COM

FOR TOPO MAP SCALE 1:9600 1 INCH = 800 FT.

