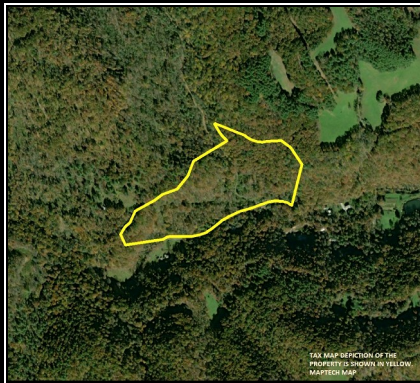
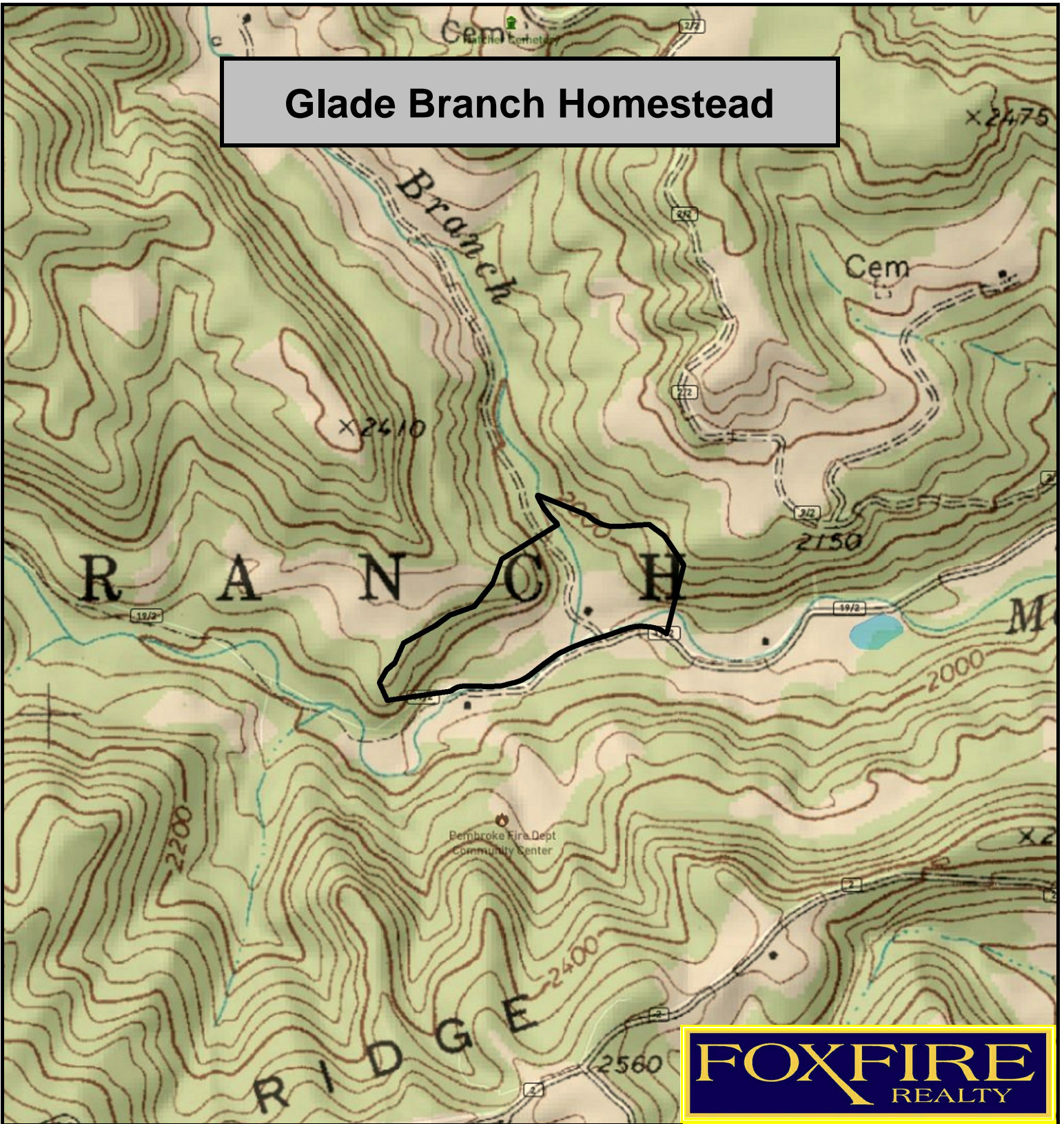


# Glade Branch Homestead



TAX MAP DEPICTION OF THE PROPERTY IS SHOWN IN YELLOW. MAPSOURCE.COM

Glade Branch Homestead, Mercer County, WV  
TOPOGRAPHIC MAP  
Elevation Range: 1948' - 2064' +/-  
Google Coordinates: LAT 37.543052 (N), LON -81.071290 (W)  
This map is for general location purposes only. Consult a licensed land surveyor for actual boundary location and acreage.  
TAX MAP DEPICTION OF THE PROPERTY IS SHOWN.

**FOXFIRE**  
REALTY

RICHARD GRIST, Broker - Auctioneer - Forester  
304.646.8837 Richard@Foxfirenation.com  
[WWW.FOXFIRENATION.COM](http://WWW.FOXFIRENATION.COM)

FOR TOPO MAP

SCALE 1:9600

1 INCH = 800 FT.

