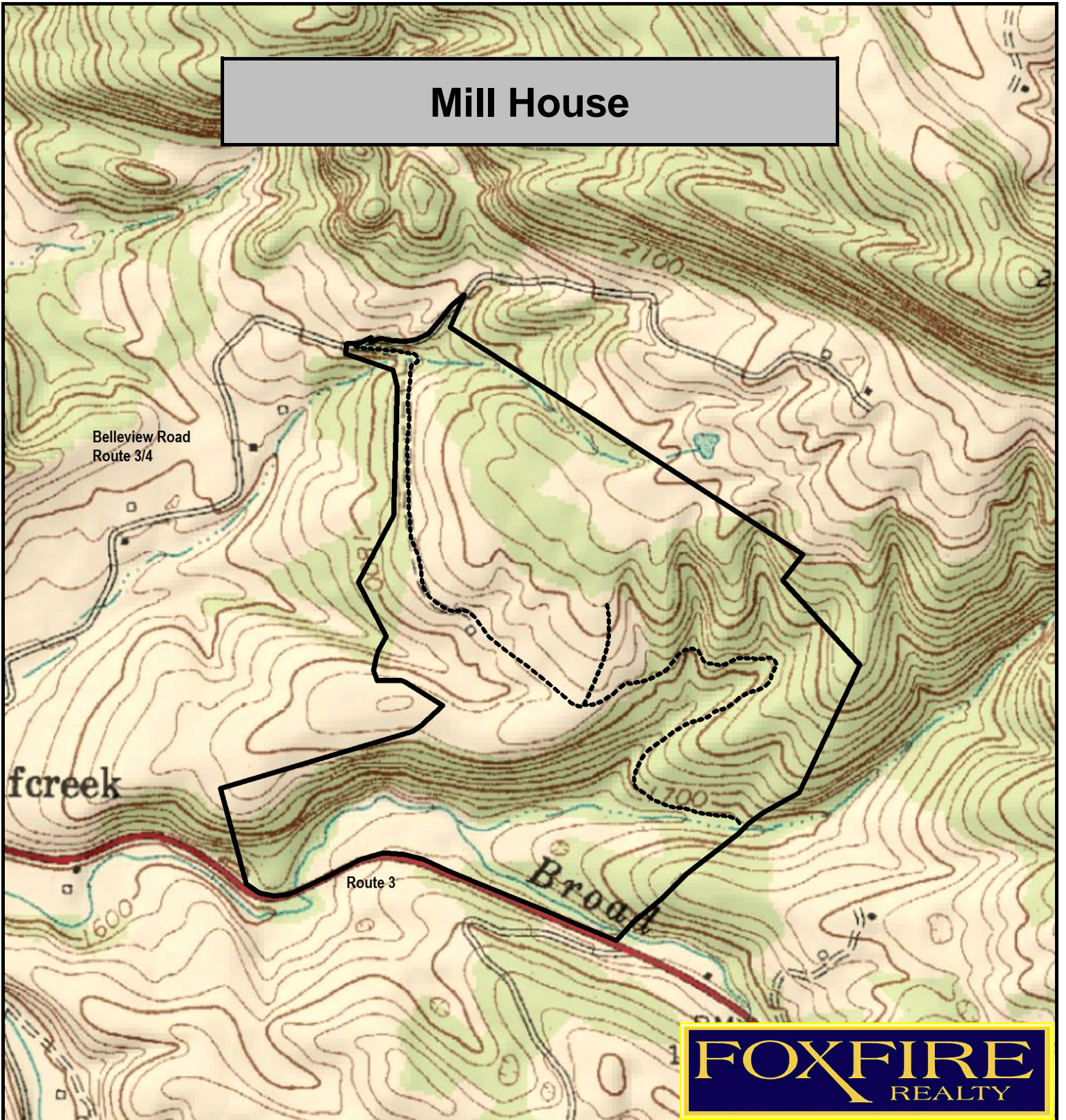
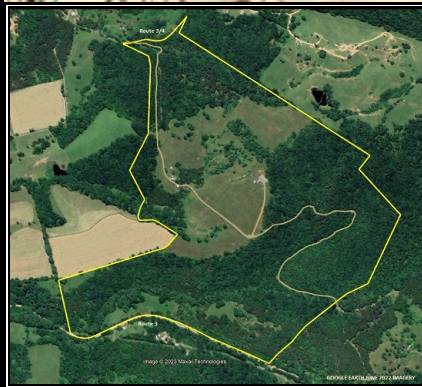


Mill House



FOXFIRE
REALTY



Mill House, Monroe County, WV
TOPOGRAPHIC MAP
Elevation Range: 1620' - 1984' +/-
Google Coordinates: LAT 37.672770 (N), LON -80.613033 (W)
This map is for general location purposes only. Consult a licensed land surveyor for actual boundary location and acreage.

RICHARD GRIST, Broker - Auctioneer - Forester
304.646.8837 Richard@Foxfirenation.com
WWW.FOXFIRENATION.COM

