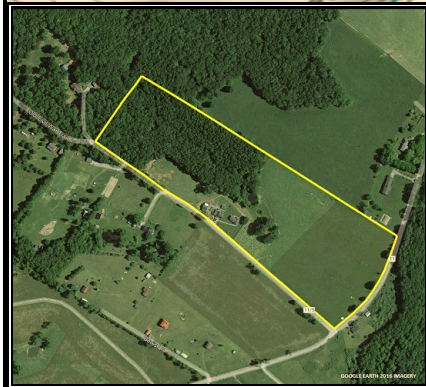
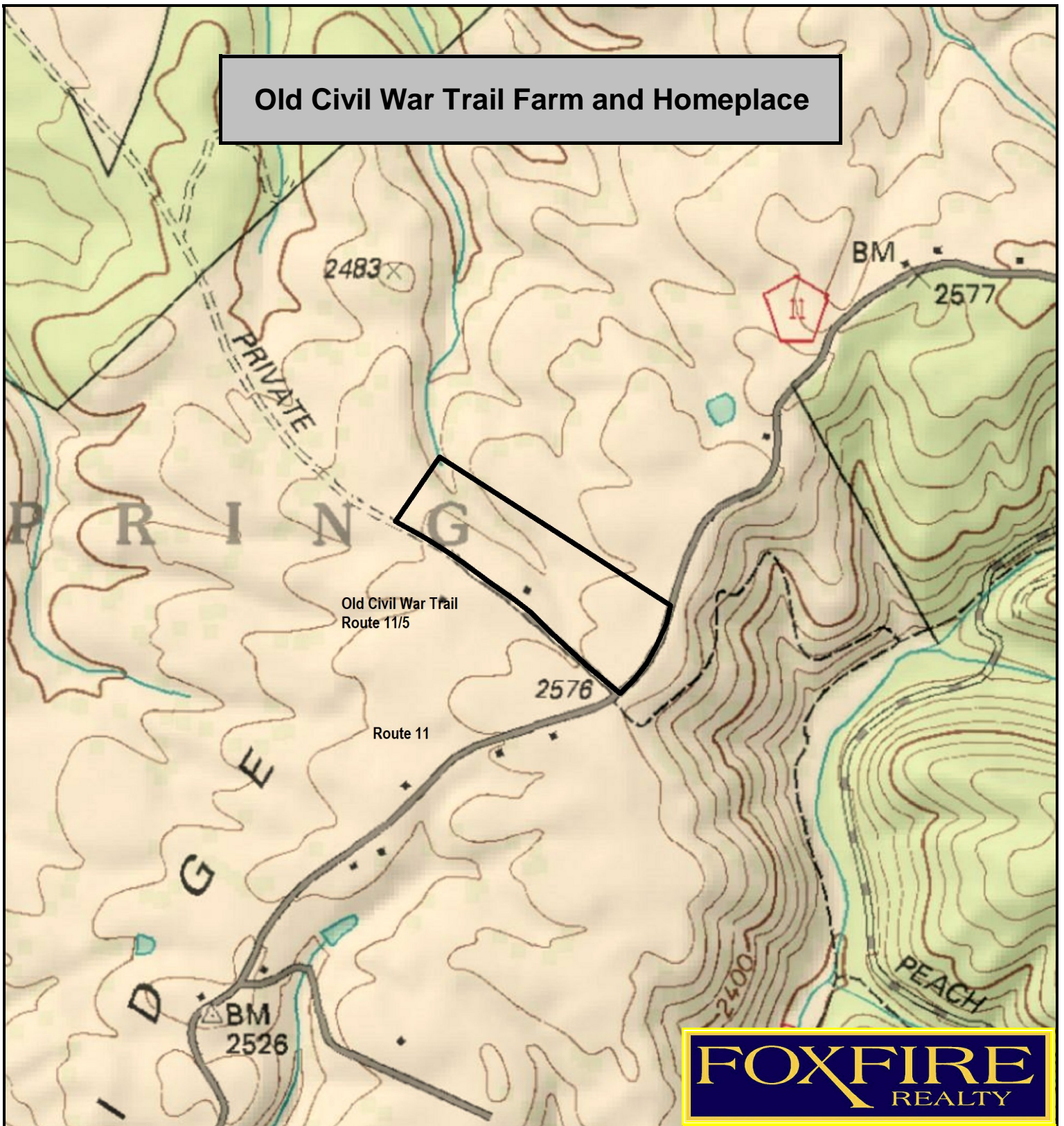


Old Civil War Trail Farm and Homeplace



Old Civil War Trail Farm and Homeplace, Greenbrier County, WV
TOPOGRAPHIC MAP
Elevation Range: 2476' - 2585' +/-
Google Coordinates: LAT 37.973595 (N), LON -80.302510 (W)
This map is for general location purposes only. Consult a licensed land surveyor for actual boundary location and acreage.

FOX FIRE
REALTY

RICHARD GRIST, Broker - Auctioneer - Forester
304.646.8837 Richard@Foxfirenation.com
WWW.FOXFIRENATION.COM

FOR TOPO MAP SCALE 1:9600 1 INCH = 800 FT.

