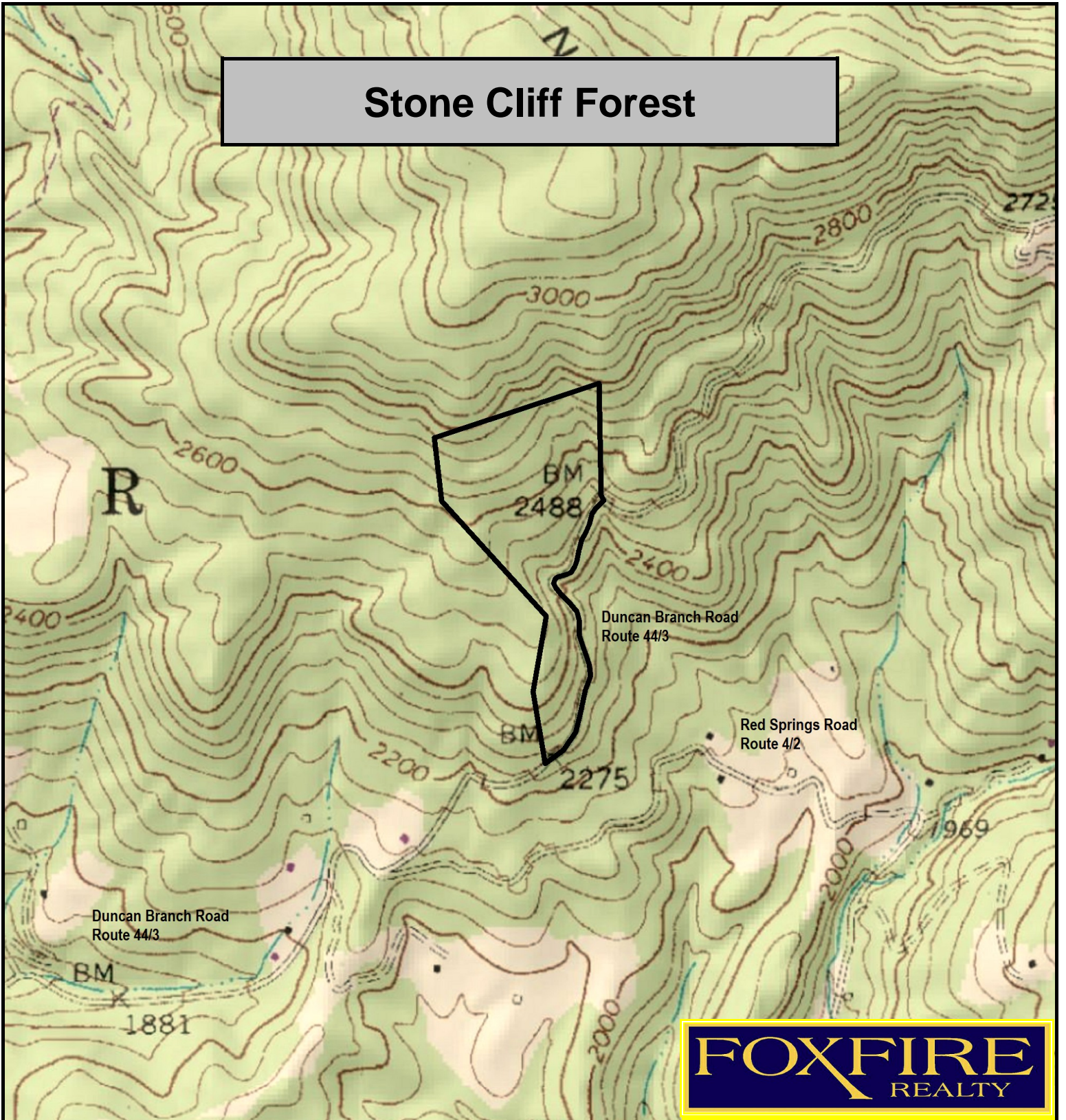


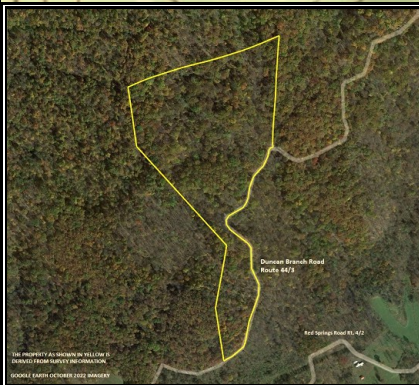
Stone Cliff Forest



FOXFIRE
REALTY

Stone Cliff Forest, Summers County, WV
TOPOGRAPHIC MAP
Elevation Range: 2282' - 2806 +/-
Google Coordinates: LAT 37.806482 (N), LON -80.777891 (W)
This map is for general location purposes only. Consult a licensed land surveyor for actual boundary location and acreage.
PROPERTY SHOWN IS DERIVED FROM SURVEY INFORMATION.

RICHARD GRIST, Broker - Auctioneer - Forester
304.646.8837 Richard@Foxfirenation.com
WWW.FOXFIRENATION.COM



FOR TOPO MAP SCALE 1:9600 1 INCH = 800 FT.

