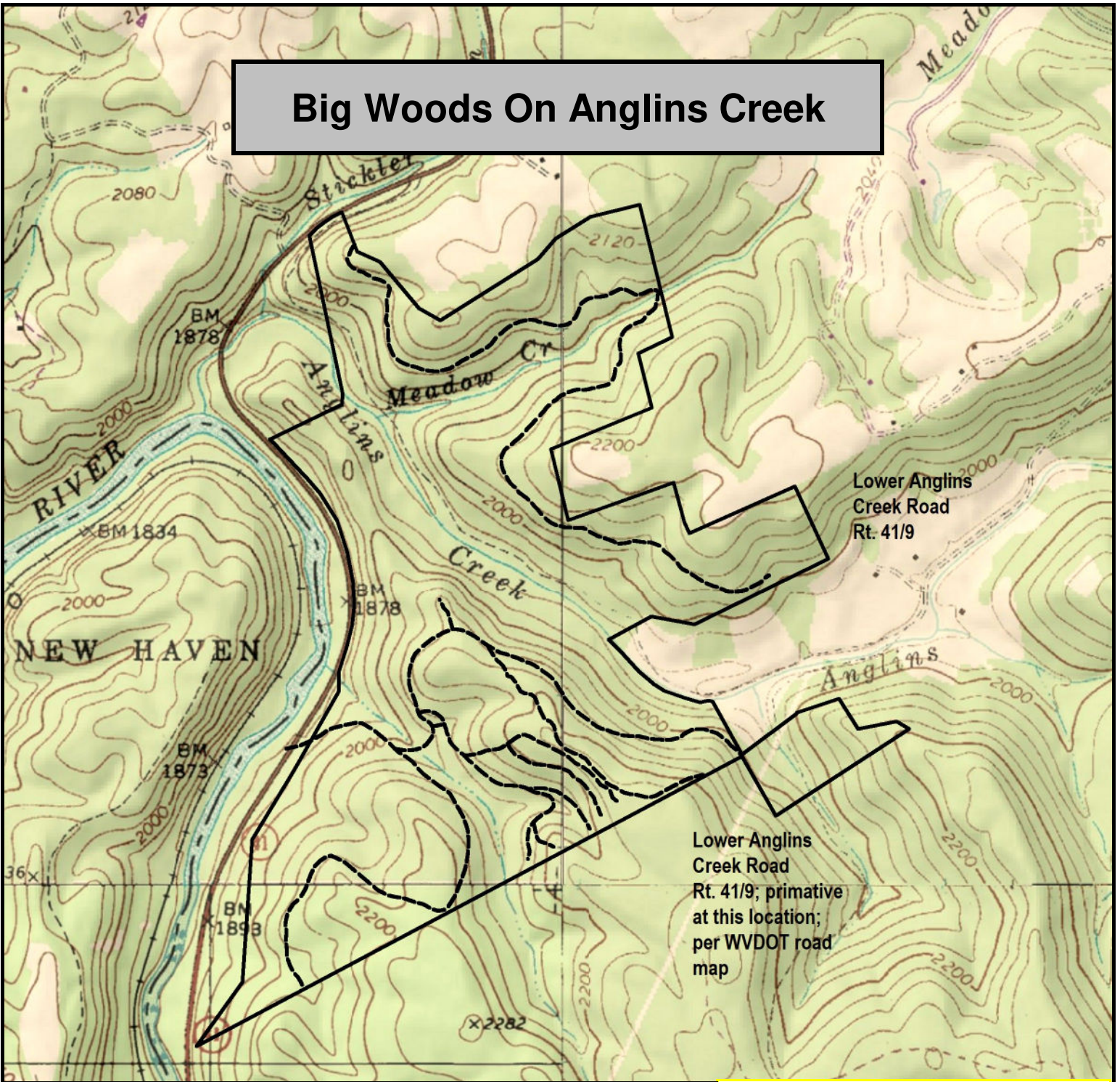




Big Woods On Anglins Creek



Lower Anglins
Creek Road
Rt. 41/9

Lower Anglins
Creek Road
Rt. 41/9; primitive
at this location;
per WVDOT road
map

PROPERTY LEGEND

-  Property Boundary Approximate Location
-  Roads & Trails of Various Condition

FOXFIRE REALTY

Big Woods On Anglins Creek, Nicholas County, WV
TOPOGRAPHIC MAP
Elevation Range: 1907' - 2257' +/-
Google Coordinates: LAT 38.28459 (N), LON -80.883370 (W)
This map is for general location purposes only. Consult a licensed
land surveyor for actual boundary location and acreage.

RICHARD GRIST, Broker - Auctioneer - Forester
304.646.8837 Richard@Foxfirenation.com
WWW.FOXFIRENATION.COM

FOR TOPO MAP

SCALE 1:15000

1 INCH = 1,250 FT.

