

PROPERTY LINE TABLE			PROPERTY LINE TABLE		
LINE	BEARING	DISTANCE	LINE	BEARING	DISTANCE
L1	S39°40'53"W	68.96	L21	S31°23'32"W	21.70
L2	S49°25'43"W	46.30	L22	S17°42'37"W	24.50
L3	S56°46'54"W	36.52	L23	S05°16'29"W	83.21
L4	S64°03'41"W	48.76	L24	S09°31'05"W	29.63
L5	S73°30'26"W	46.56	L25	S13°18'19"W	27.36
L6	S72°02'03"W	34.73	L26	S15°41'38"W	33.58
L7	S50°58'40"W	27.73	L27	S22°35'32"W	30.78
L8	S28°46'19"W	30.22	L28	S30°39'44"W	32.18
L9	S12°15'46"W	33.20	L29	S38°22'35"W	26.87
L10	S02°16'23"W	33.42	L30	S46°38'07"W	33.92
L11	S07°14'25"E	38.65	L31	S46°50'31"W	34.04
L12	S16°02'55"E	56.99	L32	S42°22'19"W	37.44
L13	S11°49'02"E	22.66	L33	S32°25'21"W	20.03
L14	S02°45'21"W	14.81	L34	S17°34'17"W	38.15
L15	S18°13'55"W	19.30	L35	S02°26'12"W	64.30
L16	S36°47'51"W	15.63	L36	S03°01'36"E	72.70
L17	S54°20'33"W	26.85	L37	S04°09'06"W	52.28
L18	S67°48'57"W	34.53	L38	S14°52'39"W	85.33
L19	S54°19'13"W	21.88	L39	S14°52'27"W	52.65
L20	S45°40'31"W	18.08			

PATRICIA S. & DAVID R. MCCLINTIC
DEED BOOK: 537 PAGE: 14
TAX MAP: 121 PARCEL 7

TRACT I
42.94 AC.

TRACT 2
42.94 AC.

EDWARD W. BREIT
WILL BOOK: 43 PAGE: 191
DEED BOOK: 215 PAGE: 111(DESCRIPTION)
TAX MAP: 121 PARCEL 11

PATRICIA S. & DAVID R. MCCLINTIC
DEED BOOK: 537 PAGE: 14
TAX MAP: 121 PARCEL 6

ERNESTINE MITCHELL
WILL BOOK: 14 PAGE: 431
TAX MAP: 121 PARCEL 9
(DESCRIPTION)
DEED BOOK: 65 PAGE: 441

ERNESTINE MITCHELL
WILL BOOK: 14 PAGE: 431
TAX MAP: 121 PARCEL 8
(DESCRIPTION)
DEED BOOK: 43 PAGE: 336

MIKE A. SETTLE
DEED BOOK: 381 PAGE: 446
TAX MAP: 79 PARCEL 41
(GREENBRIER COUNTY)

COUNTY LINE
(TAKEN FROM U.S.G.S. QUAD.)
(APPROXIMATE LOCATION)

MIKE A. SETTLE
DEED BOOK: 381 PAGE: 446
TAX MAP: 79 PARCEL 40
(GREENBRIER COUNTY)

MINI FILE
FILED IN OFFICE
OF FAYETTE COUNTY CLERK
Kelvin E. Holliday, Clerk

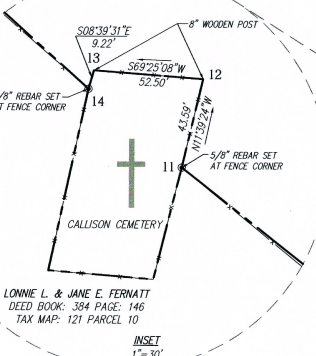
PLAT OF SURVEY
SHOWING THE ESTATE OF
ERNESTINE MITCHELL
BEING 85.88 ACRES (2-TRACTS)
LOCATED ON SIMMS MOUNTAIN ROAD
NEW HAVEN DISTRICT, FAYETTE COUNTY, WEST VIRGINIA
SCALE: 1"= 120' DATE: NOVEMBER, 2001



SURVEY BY: DAVID A. BROWN SIT#26 (UNDER DIRECT SUPERVISION OF STEVEN A. YOUNG P.S. #1345)

NOTES:
RIGHT OF WAY THROUGH PARCEL 9 IS DEFINED BY DEED AS
"A STRIP OF LAND THROUGH THE LANDS FORMERLY OWNED
BY I.O. CALLISON, BEING WIDE ENOUGH FOR A GOOD
PRACTICAL WAGON ROAD AND CONTAIN 1 ACRE MORE OR LESS"

- LEGEND**
- PROPERTY LINE
 - - - TRACT LINE
 - x-x- EXISTING FENCE LINE
 - 5/8" REBAR W/CAP SET
 - FOUND MONUMENTATION
 - CALCULATED POINT
 - 4 PROPERTY CORNER NUMBER



LONNIE L. & JANE E. FERNATT
DEED BOOK: 384 PAGE: 146
TAX MAP: 121 PARCEL 10

LONNIE L. & JANE E. FERNATT
DEED BOOK: 384 PAGE: 146
TAX MAP: 121 PARCEL 10

0.9 MILES +/-
TO WEST VIRGINIA
COUNTY ROUTE 29
(IRISH MOUNTAIN ROAD)

5/8" REBAR SET
16" BLACK OAK AND
14" MAPLE WITNESS MARKED

5/8" REBAR SET IN LARGE RED OAK STUMP
NEAR LYNX STUMP
TWO 4" STRIPED MAPLE WITNESS MARKED

MIKE A. SETTLE
DEED BOOK: 381 PAGE: 446
TAX MAP: 79 PARCEL 39
(GREENBRIER COUNTY)

EDWARD W. BREIT
WILL BOOK: 54 PAGE: 620
DEED BOOK: 238 PAGE: 52(DESCRIPTION)
TAX MAP: 121 PARCEL 11

5/8" REBAR SET AT FENCE CORNER
5" MAPLE WITNESS MARKED

5/8" REBAR SET AT FENCE CORNER

5/8" REBAR SET AT FENCE CORNER

5/8" REBAR SET AT FENCE CORNER

5/8" REBAR SET AT FENCE CORNER

5/8" REBAR SET AT FENCE CORNER

5/8" REBAR SET AT FENCE CORNER

5/8" REBAR SET AT FENCE CORNER

5/8" REBAR SET AT FENCE CORNER

5/8" REBAR SET AT FENCE CORNER

5/8" REBAR SET AT FENCE CORNER

5/8" REBAR SET AT FENCE CORNER

5/8" REBAR SET AT FENCE CORNER

5/8" REBAR SET AT FENCE CORNER

5/8" REBAR SET AT FENCE CORNER

5/8" REBAR SET AT FENCE CORNER

5/8" REBAR SET AT FENCE CORNER

5/8" REBAR SET AT FENCE CORNER

5/8" REBAR SET AT FENCE CORNER

5/8" REBAR SET AT FENCE CORNER

5/8" REBAR SET AT FENCE CORNER

5/8" REBAR SET AT FENCE CORNER

5/8" REBAR SET AT FENCE CORNER

5/8" REBAR SET AT FENCE CORNER

5/8" REBAR SET AT FENCE CORNER

5/8" REBAR SET AT FENCE CORNER

5/8" REBAR SET AT FENCE CORNER

5/8" REBAR SET AT FENCE CORNER