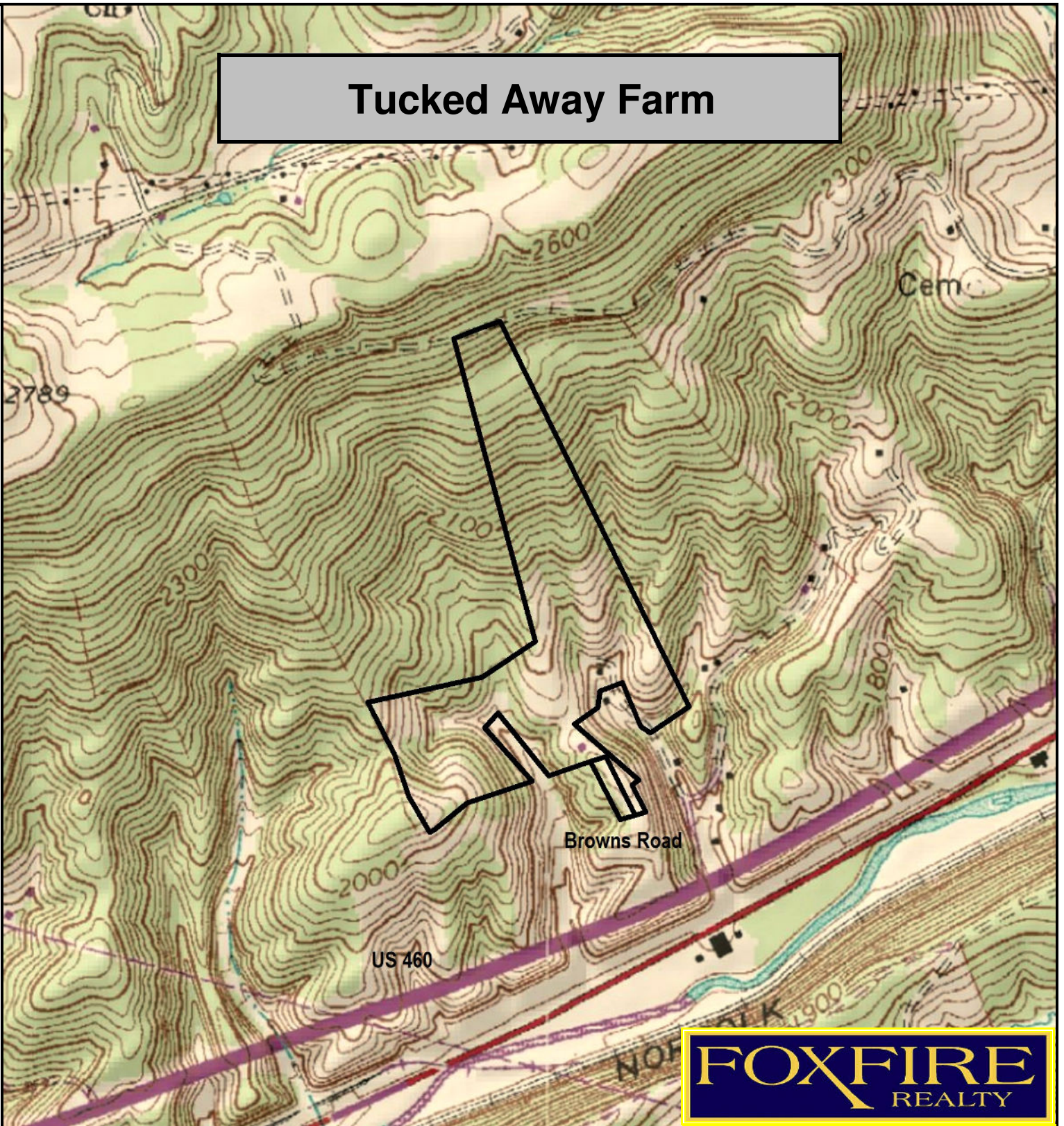


Tucked Away Farm



FOXFIRE
REALTY

Tucked Away Farm, Mercer County, WV
TOPOGRAPHIC MAP
Elevation Range: 1800' - 2466' +/-
Google Coordinates: LAT 37.354241 (N), LON -80.915099 (W)
This map is for general location purposes only. Consult a licensed land surveyor for actual boundary location and acreage.
TAX MAP DEPICTION OF THE PROPERTY IS SHOWN

RICHARD GRIST, Broker - Auctioneer - Forester
304.645.7674 Richard@Foxfirenation.com
WWW.FOXFIRENATION.COM



FOR TOPO MAP SCALE 1:9600 1 INCH = 800 FT.

