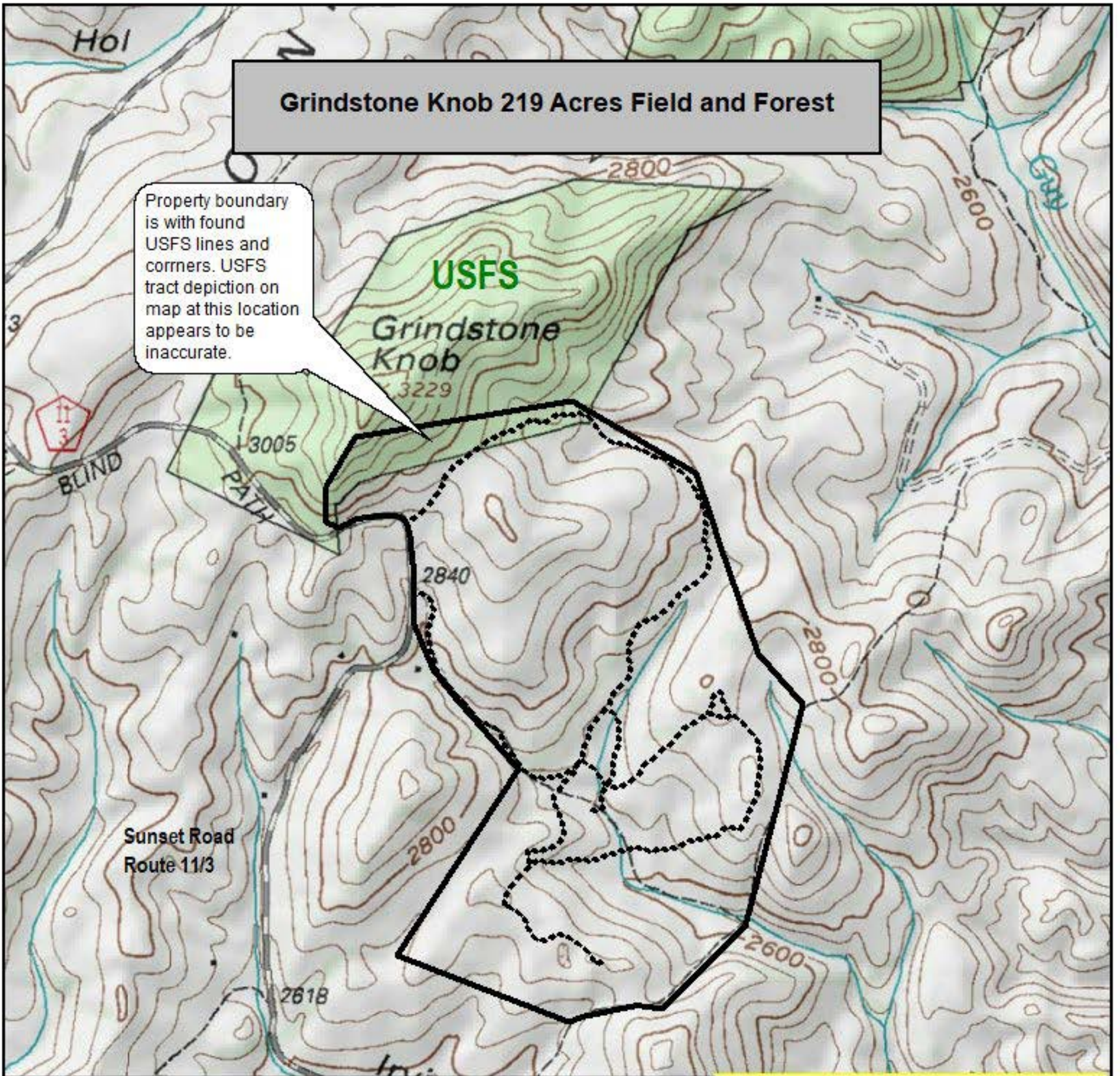


Grindstone Knob 219 Acres Field and Forest

Property boundary is with found USFS lines and corners. USFS tract depiction on map at this location appears to be inaccurate.



PROPERTY LEGEND

- Property Boundary Depiction
- - - - - Farm Trails of Various Condition

FOXFIRE REALTY



Grindstone Knob 219 Acres, Pocahontas County, WV
TOPOGRAPHIC MAP
Elevation Range: 2574' - 3166' +/-
Google Coordinates: LAT 38.220038 (N), LON -79.945825 (W)
This map is for general location purposes only. Consult a licensed land surveyor for actual boundary location and acreage.

RICHARD GRIST, Broker - Auctioneer - Forester
304.645.7674 Richard@Foxfirenation.com
WWW.FOXFIRENATION.COM

FOR TOPO MAP

SCALE 1:12000

1 INCH = 1,000 FT.

