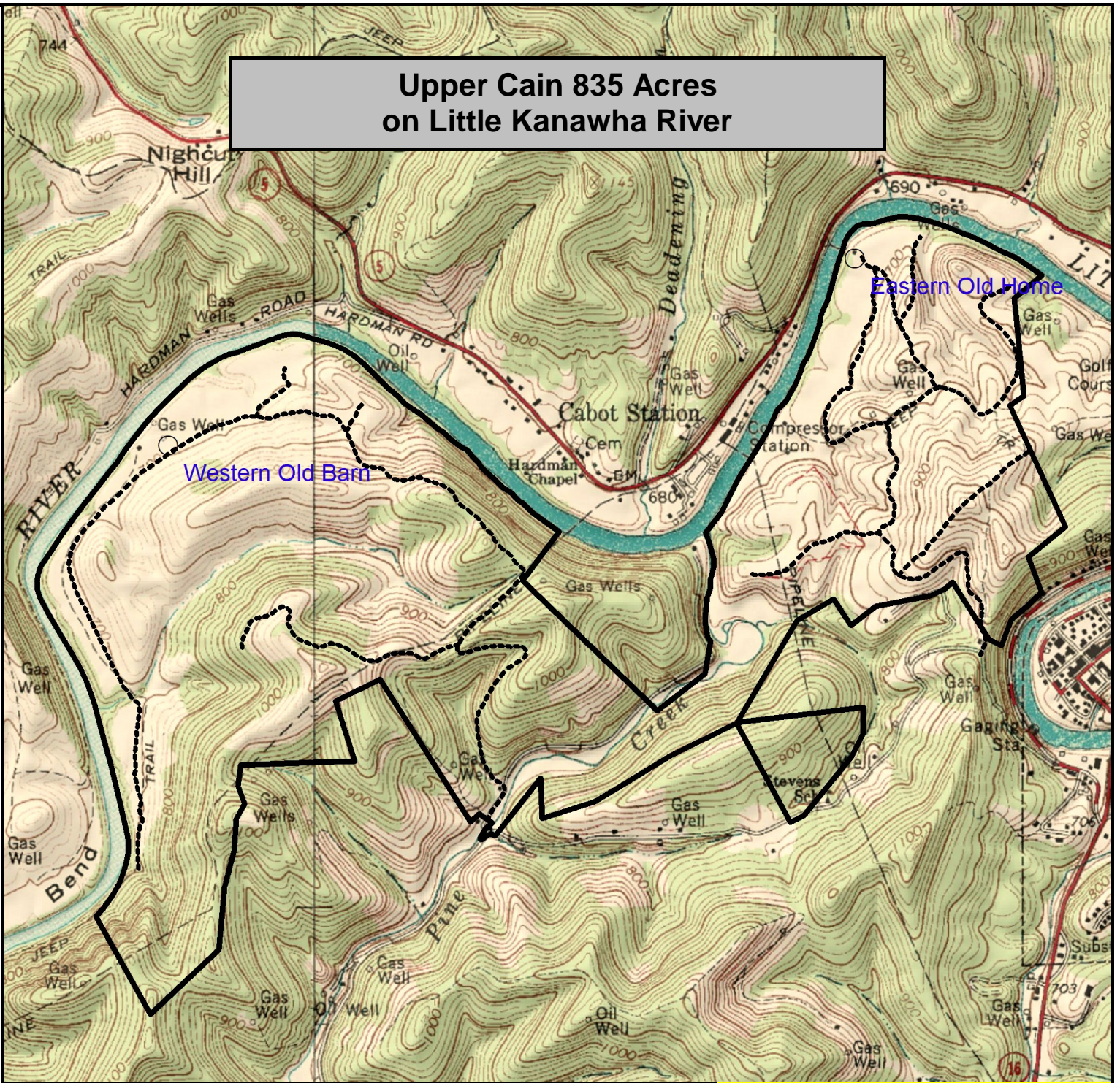

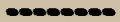


Upper Cain 835 Acres on Little Kanawha River

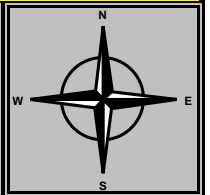
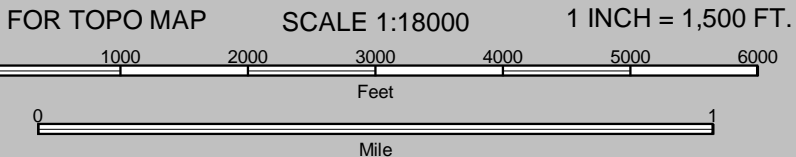
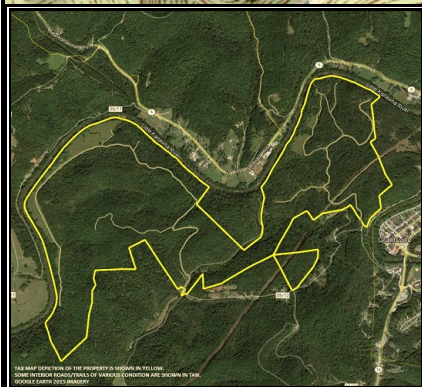


-  Tax Map Depiction of the outside boundary
-  Some interior roads/trails of various condition

FOX FIRE
REALTY

Upper Cain 835 Acres, Calhoun County, WV
TOPOGRAPHIC MAP
Elevation Range: 699' - 1128' +/-
Google Coordinates: LAT 38.924231 (N), LON -81.099743 (W)
This map is for general location purposes only. Consult a licensed land
surveyor for actual boundary location and acreage.
TAX MAP DEPICTION OF THE PROPERTY IS SHOWN.

RICHARD GRIST, Broker - Auctioneer - Forester
304.645.7674 Richard@Foxfirenation.com
WWW.FOXFIRENATION.COM



THIS MAP DEPICTION OF THE PROPERTY IS SHOWN IN YELLOW.
SOME INTERIOR ROADS/TRAILS OF VARIOUS CONDITION ARE SHOWN IN DASH.
SOURCE: ENRIS 2012 BOUNDARY