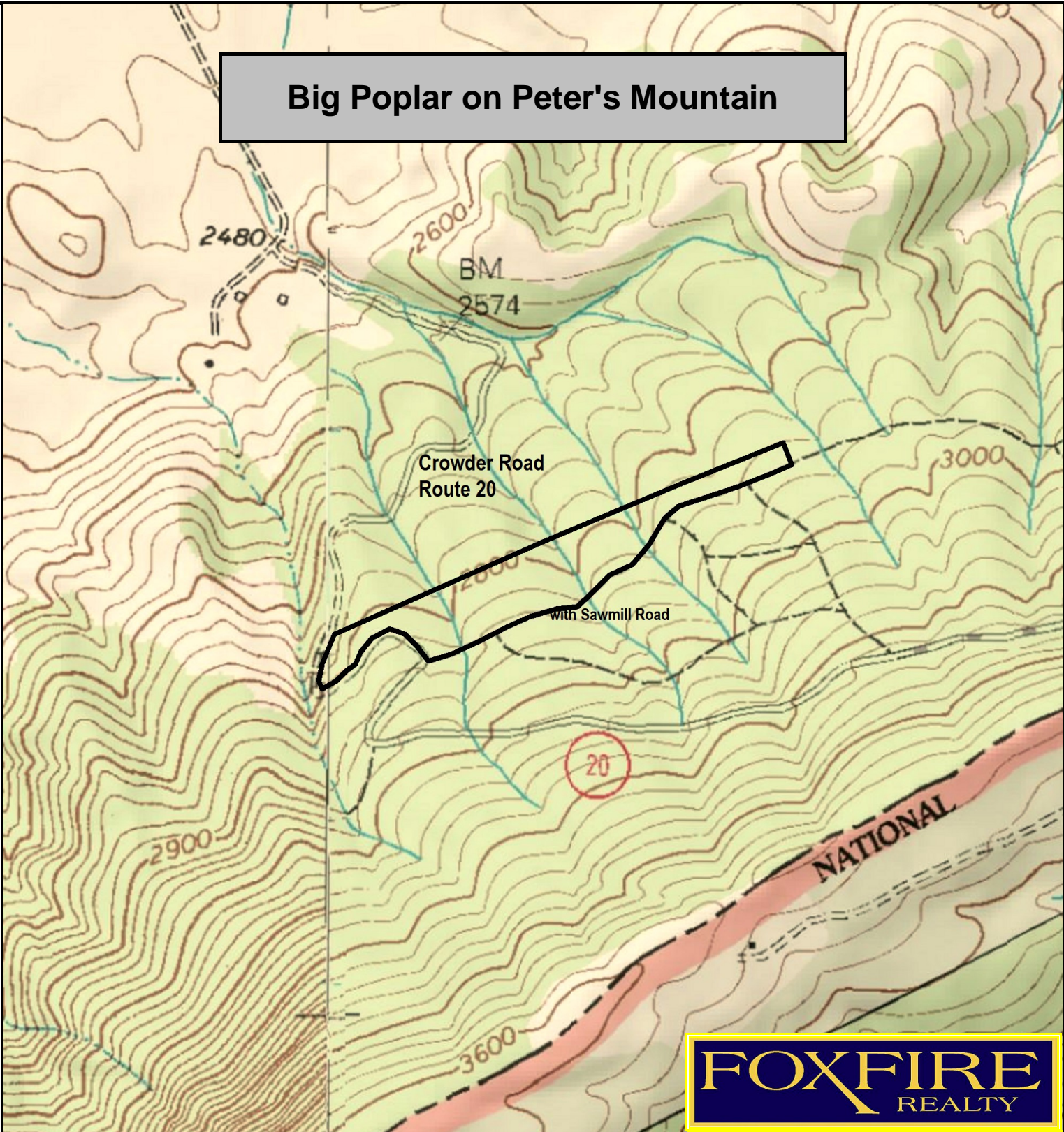
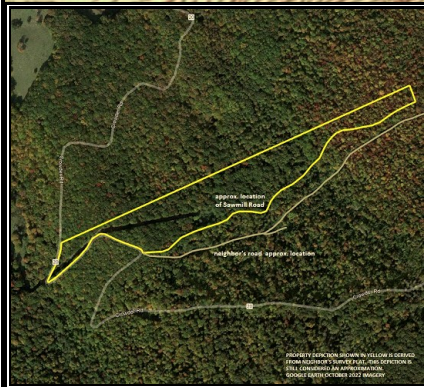


Big Poplar on Peter's Mountain



FOXFIRE
REALTY



Big Poplar on Peter's Mountain, Monroe County, WV
 TOPOGRAPHIC MAP
 Elevation Range: 2833' - 2877' +/-
 Google Coordinates: LAT 37.547596 (N), LON -80.372506 (W)
 This map is for general location purposes only. Consult a licensed land
 surveyor for actual boundary location and acreage.
 PROPERTY DEPICTION IS AN APPROXIMATE LOCATION FROM NEIGHBOR'S
 SURVEY PLAT.

RICHARD GRIST, Broker - Auctioneer - Forester
 304.645.7674 Richard@Foxfirenation.com
 WWW.FOXFIRENATION.COM

