

Lilly Country Parcels

Parcel 4
2.5 Ac +/-

Parcel 3
15 Ac +/-

Parcel 2
14 Ac +/-

Parcel 1
2.5 Ac +/-

FOXFIRE
REALTY

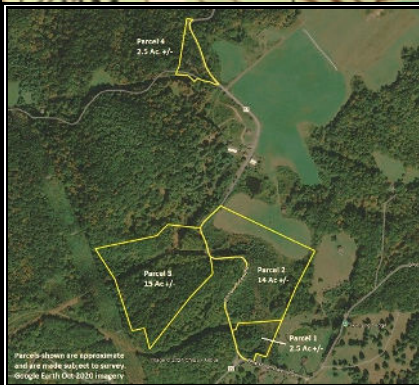
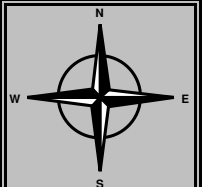
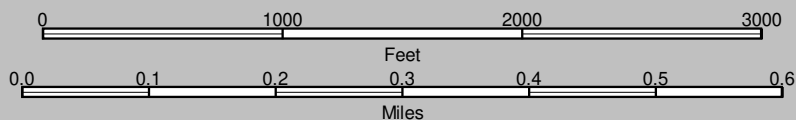
Lilly Country Parcels, Summers County, WV
TOPOGRAPHIC MAP
Elevation Range: 2258' - 2549' +/-
Google Coordinates: LAT 37.583941(N), LON -80.99586 (W)
This map is for general location purposes only. Consult a licensed land
surveyor for actual boundary location and acreage.

RICHARD GRIST, Broker - Auctioneer - Forester
304.645.7674 Richard@Foxfirenation.com
WWW.FOXFIRENATION.COM

FOR TOPO MAP

SCALE 1:9600

1 INCH = 800 FT.



Parcels shown are approximate
and are made subject to survey.
Google Earth Oct 03/20 Imagery