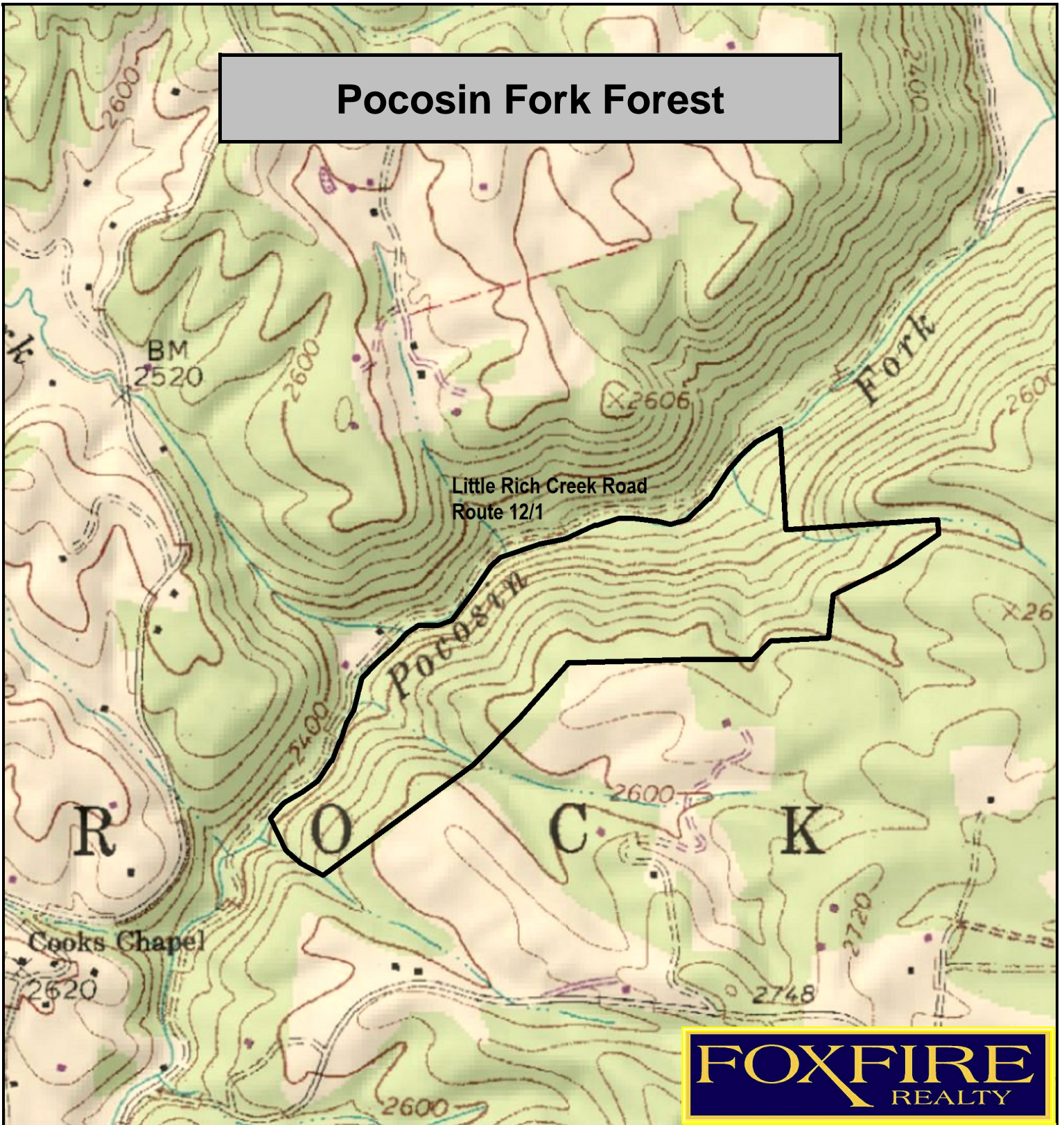


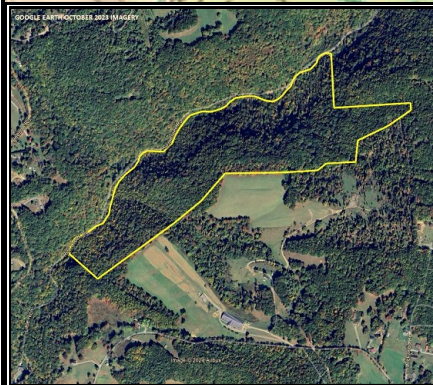
Pocosin Fork Forest



FOXFIRE
REALTY

Pocosin Fork Forest, Mercer County, WV
TOPOGRAPHIC MAP
Elevation Range: 2231' - 2630' +/-
Google Coordinates: LAT 37.440069 (N), LON -81.195049 (W)
This map is for general location purposes only. Consult a licensed land surveyor for actual boundary location and acreage.

RICHARD GRIST, Broker - Auctioneer - Forester
304.645.7674 Richard@Foxfirenation.com
WWW.FOXFIRENATION.COM



FOR TOPO MAP

SCALE 1:9600

1 INCH = 800 FT.

